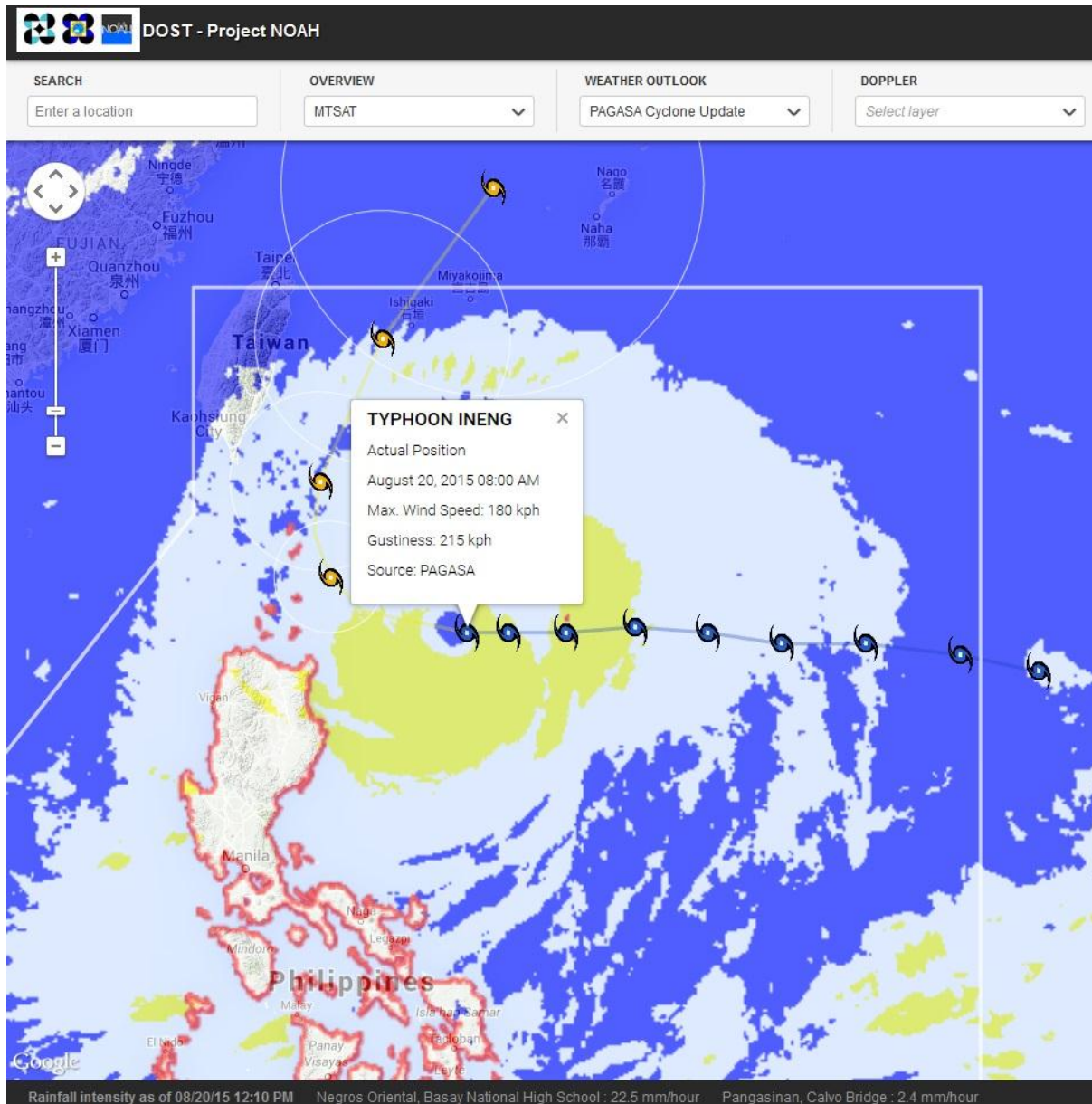


PAGASA-NOAH
Hazard Impact Analysis
for Typhoon Ineng

Based on PAGASA WRF
Initialized August 19, 2015 09:00 PM

PAGASA Forecast Track

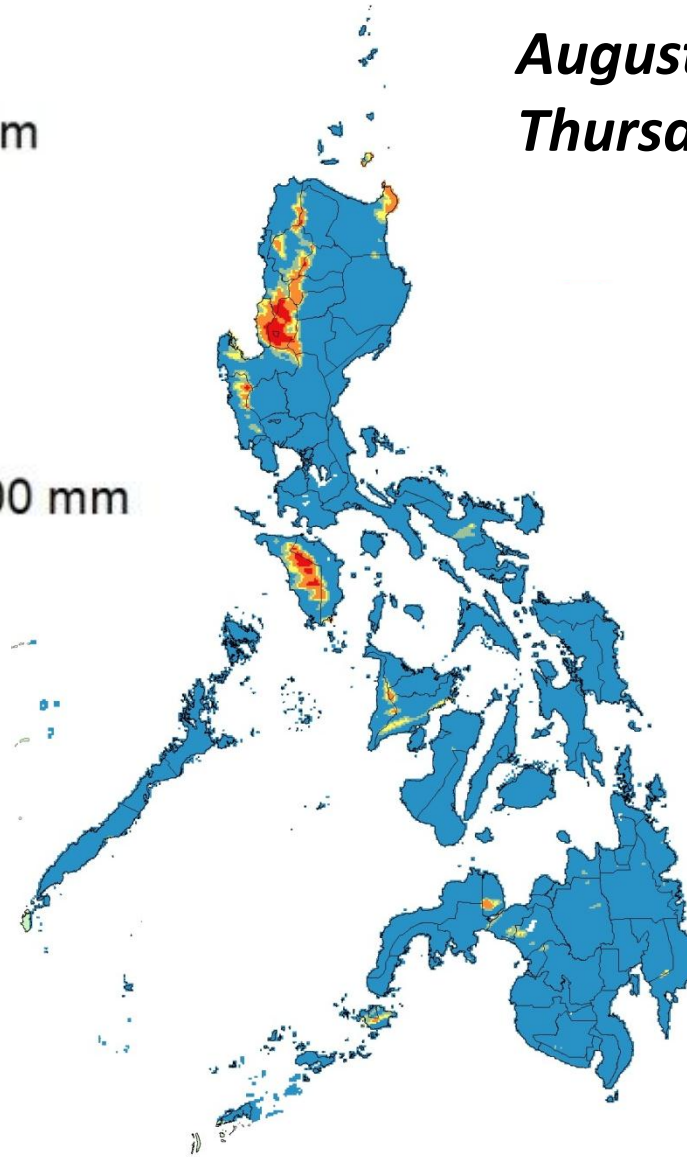


PAGASA WRD

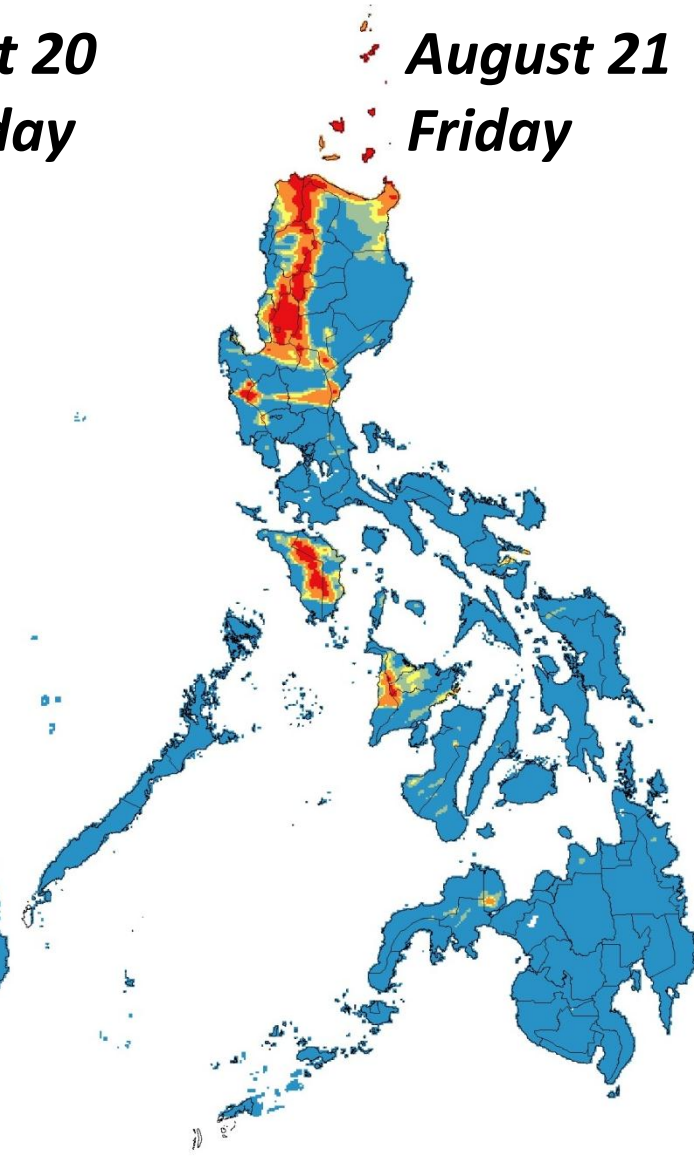
Accumulated Rainfall Forecast

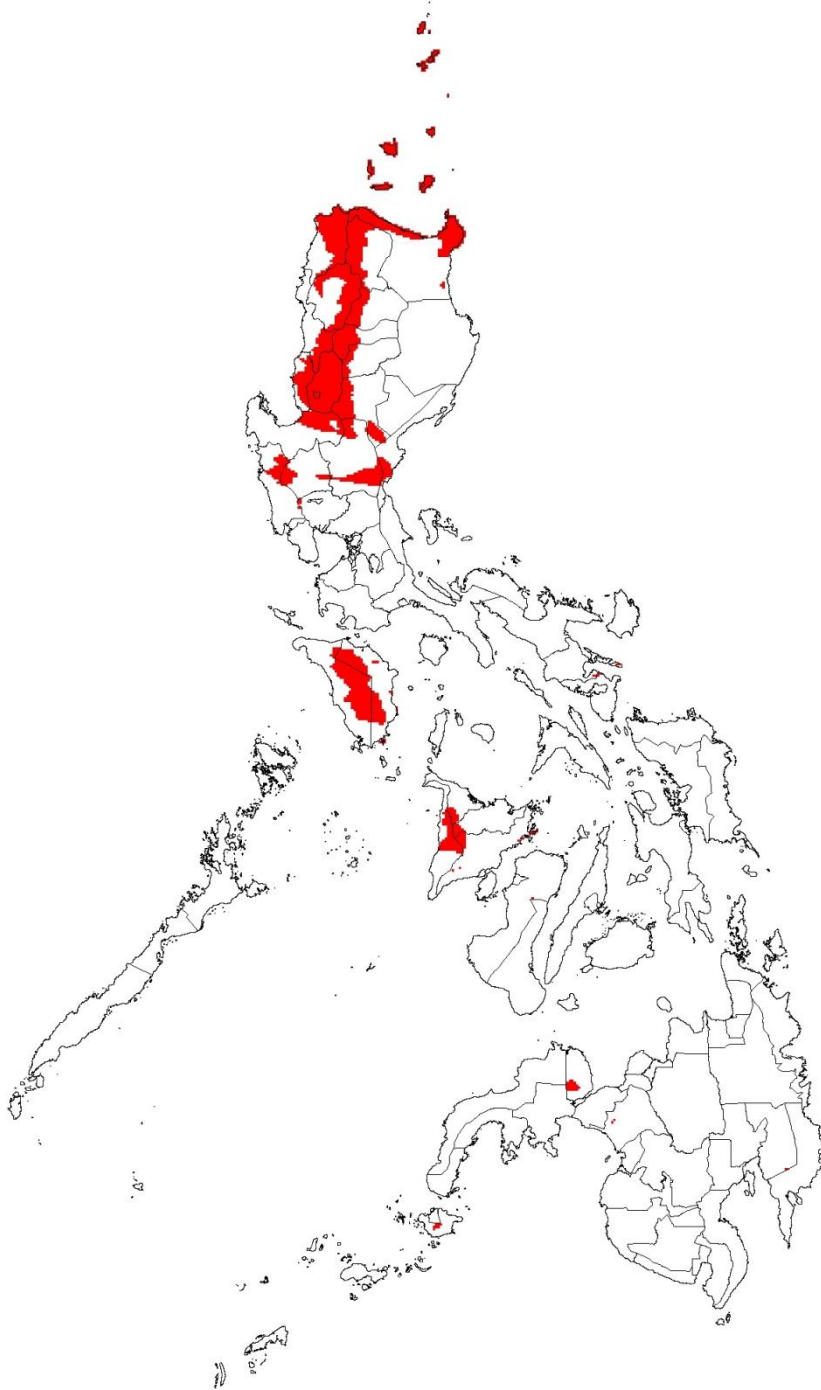


*August 20
Thursday*



*August 21
Friday*





**AREAS WITH \geq 100 mm
OF RAIN THAT MAY
TRIGGER LANDSLIDES &
FLOODS**
*Based on
PAGASA WRF*

231
Municipalities in
12 regions