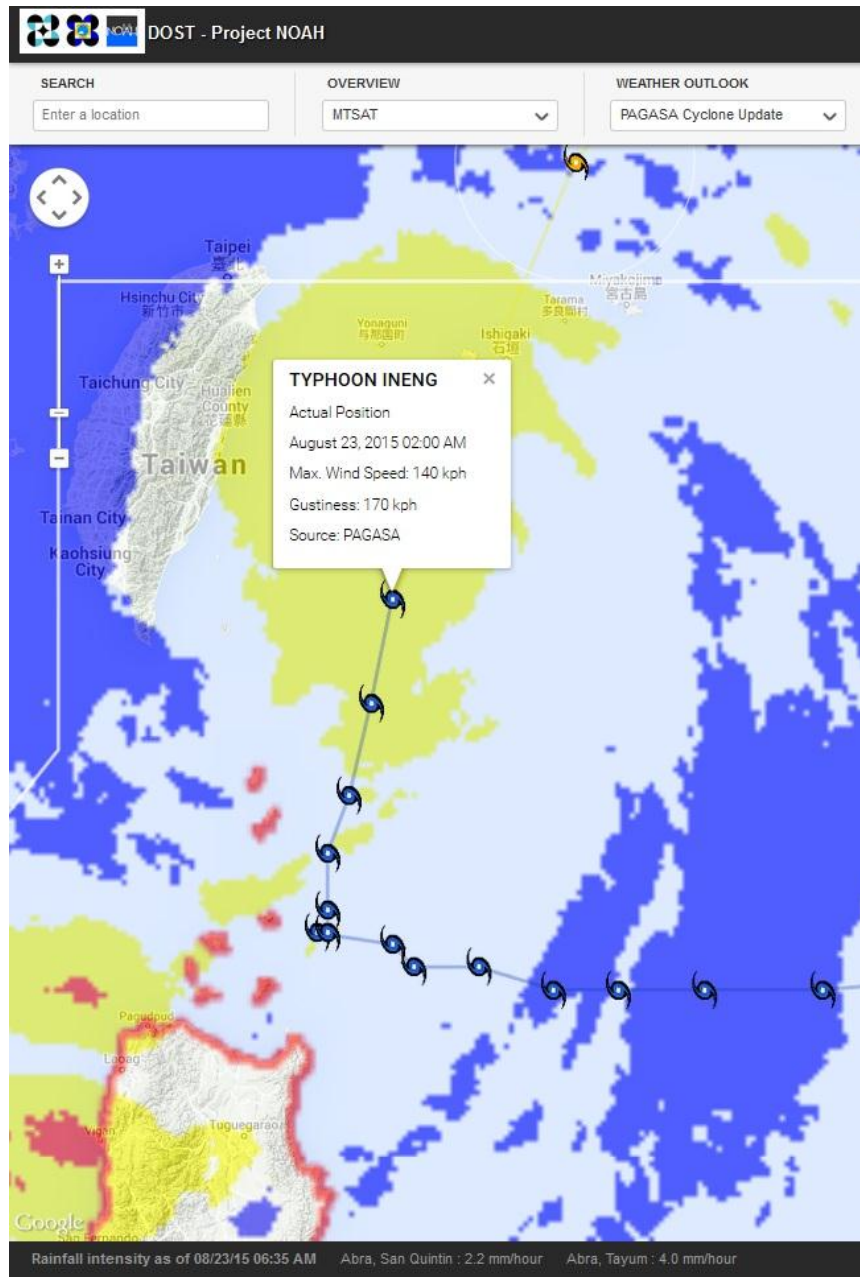


PAGASA-NOAH
Hazard Impact Analysis
for Typhoon Ineng

Based on PAGASA WRF
Initialized August 23, 2015 05:00 AM PST

PAGASA Forecast Track

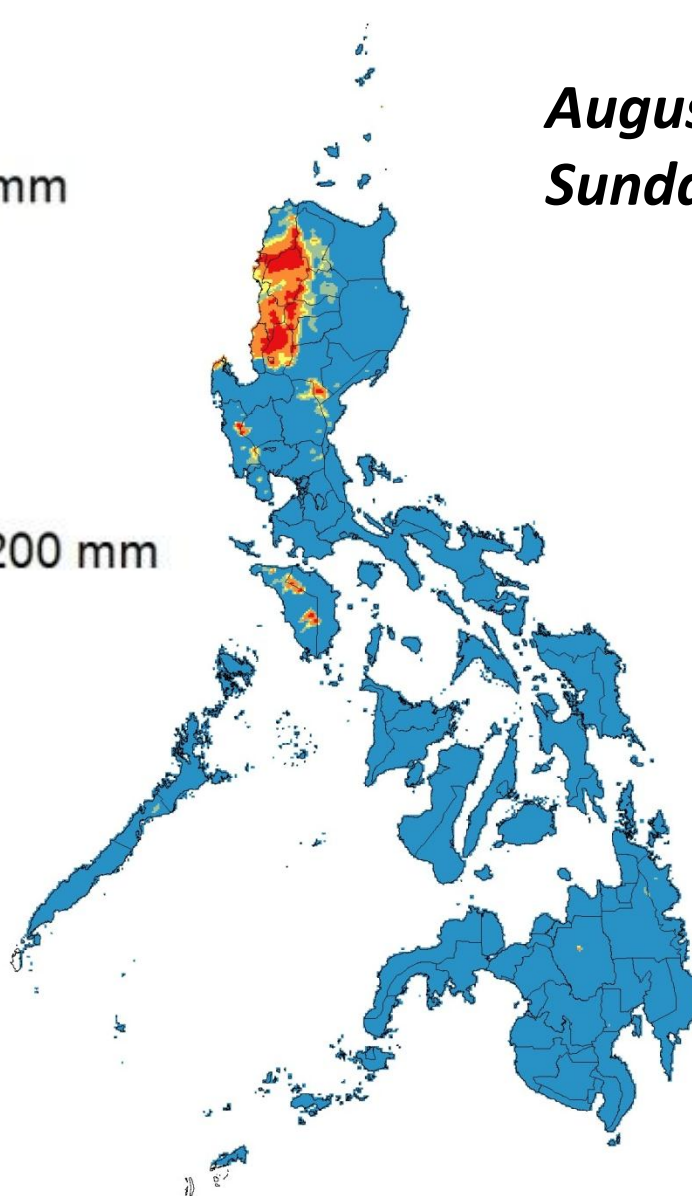


PAGASA WRF

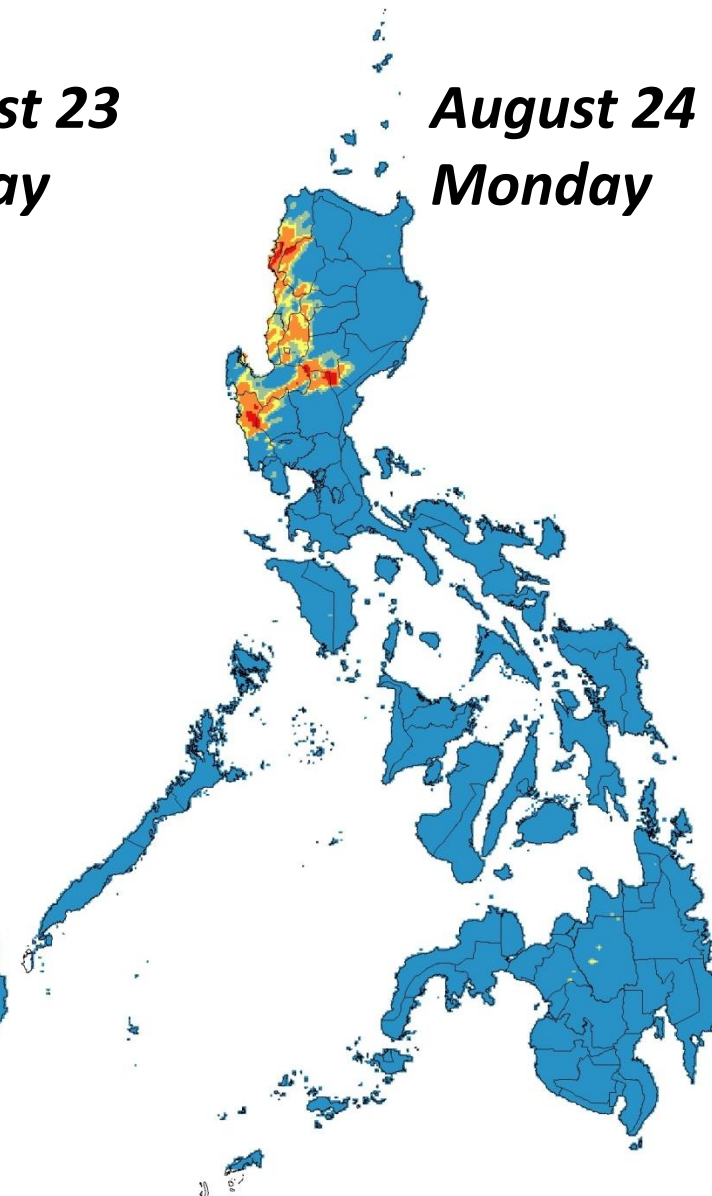
Accumulated Rainfall Forecast

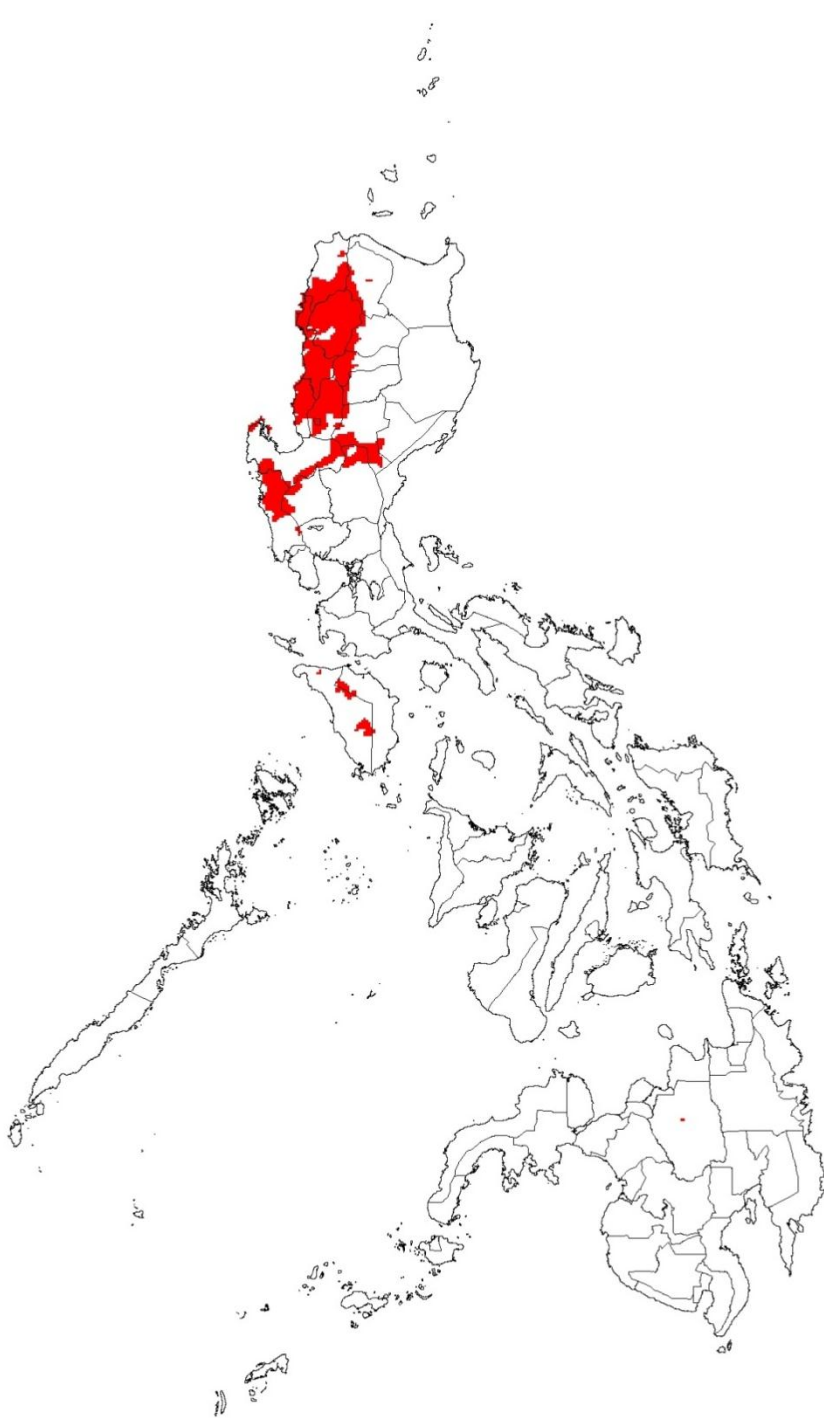


*August 23
Sunday*



*August 24
Monday*





**AREAS WITH ≥ 100 mm
OF RAIN THAT MAY
TRIGGER LANDSLIDES &
FLOODS**
*Based on
PAGASA WRF*

193
Municipalities in
6 regions