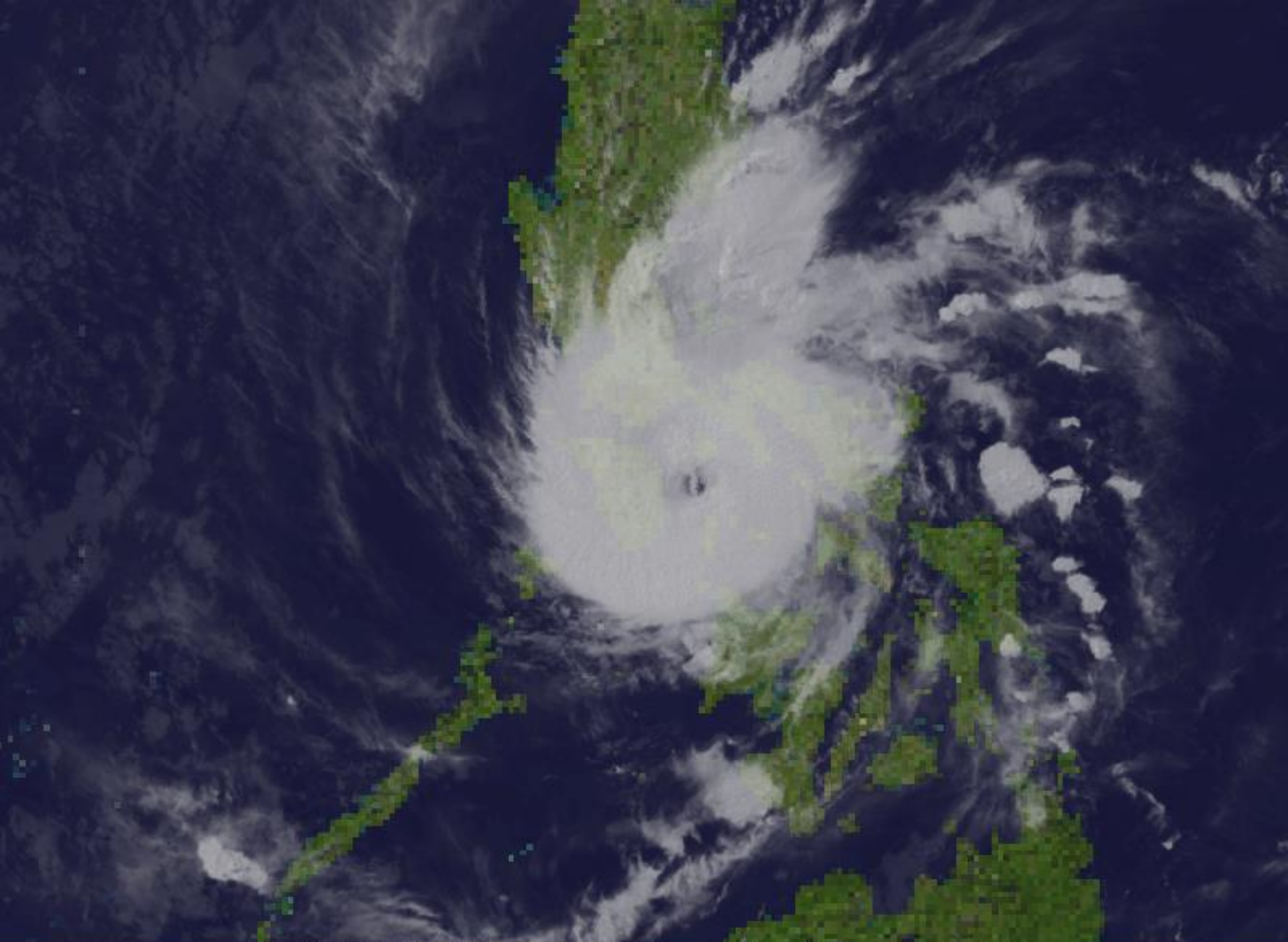


**Update on Typhoon
“NONA”
(MELOR)
(15 December 2015, 11 AM)**

Philippine Atmospheric, Geophysical and Astronomical Services
Administration (PAGASA)





VISIBLE/INFRARED

14 DEC 15

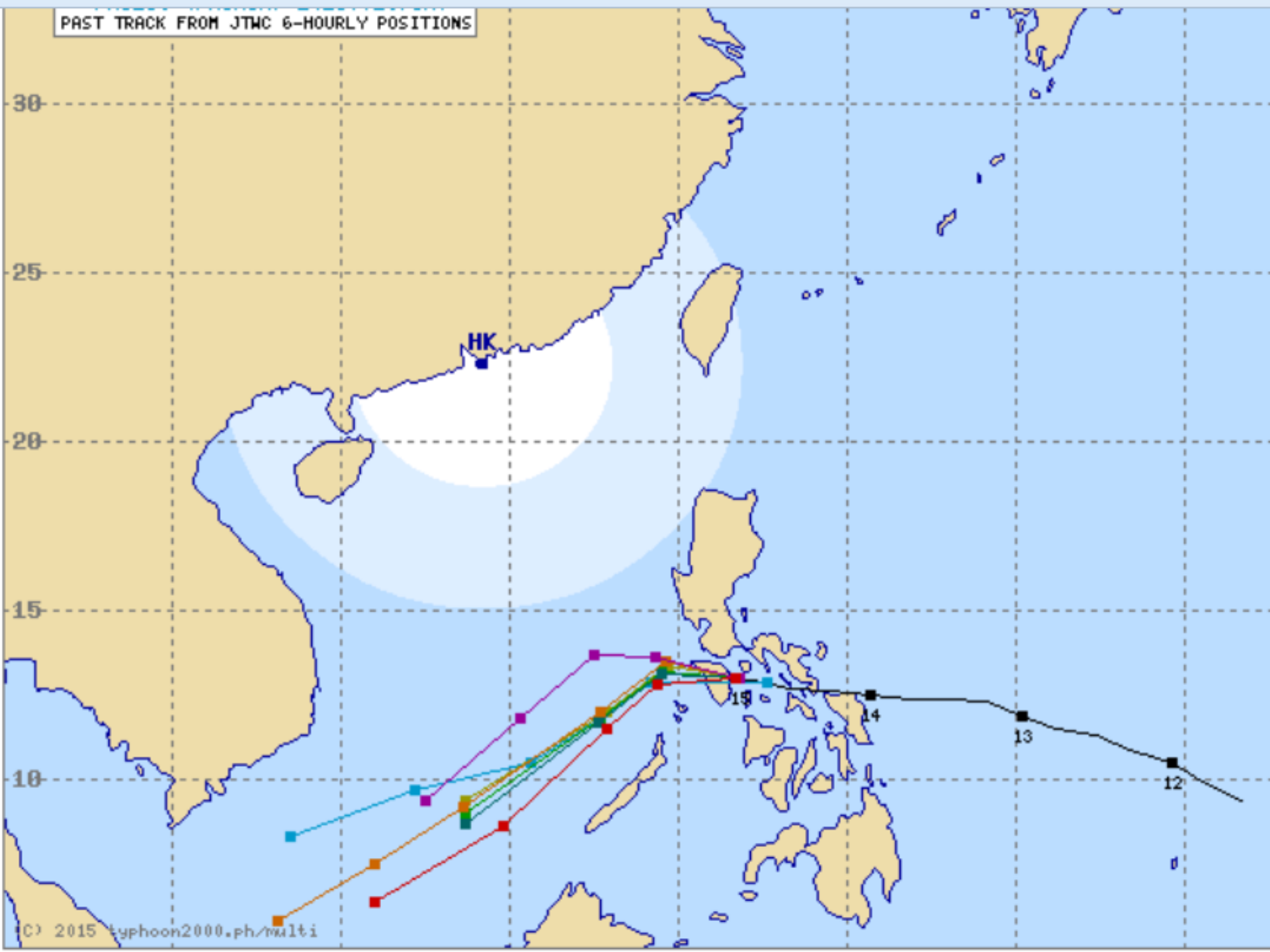
23:00UTC

UW-CIMSS

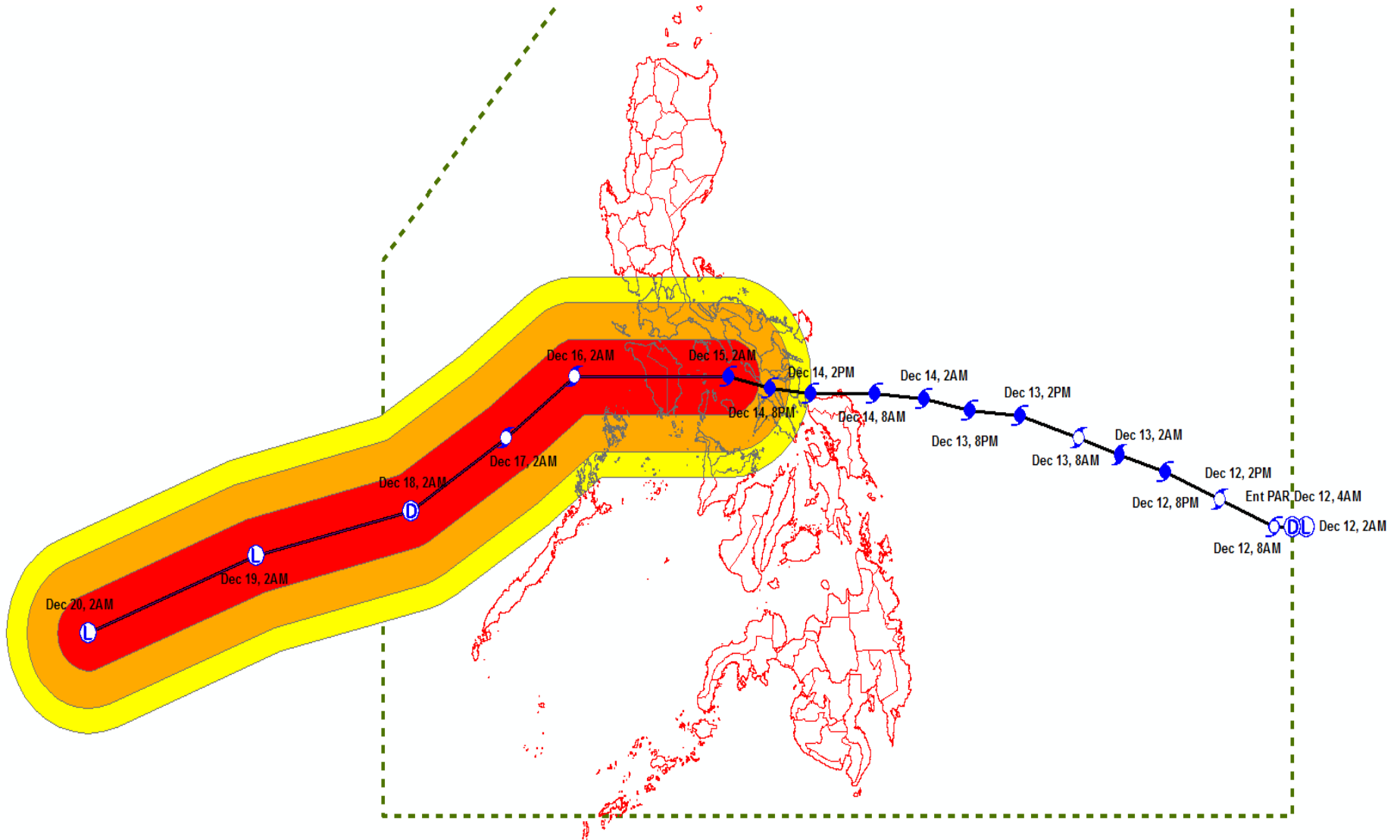
Track of Typhoon NONA {MELOR}



PAST TRACK FROM JTWC 6-HOURLY POSITIONS



POTENTIAL RISK AREA AS OF 2AM DEC 15, 2015



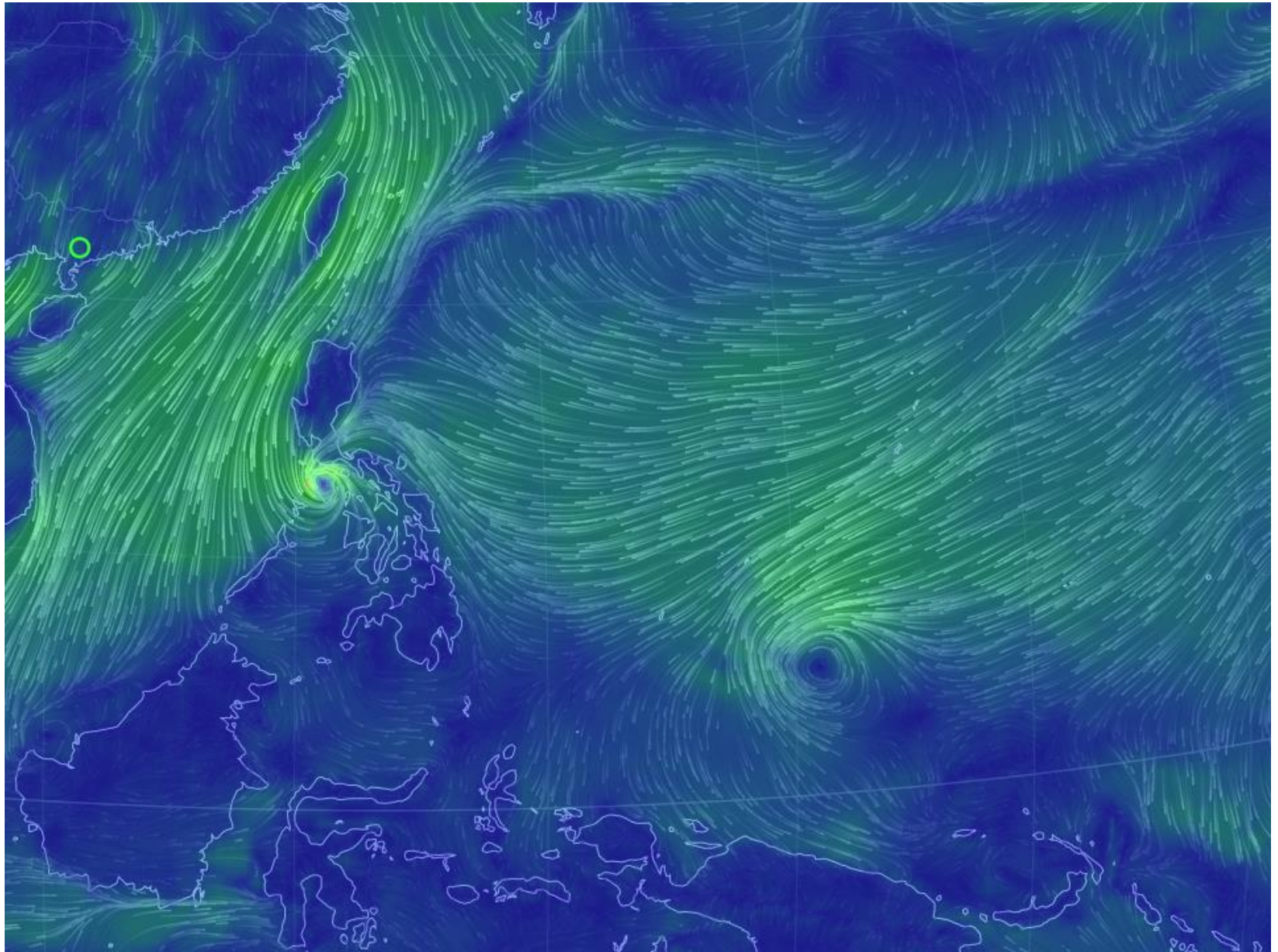
SEVERE WEATHER BULLETIN #13**TROPICAL CYCLONE WARNING: TYPHOON "NONA"****Issued at 11:00 a.m., Tuesday, 15 December 2015**Typhoon "**NONA**" is about to make a landfall over Pinamalayan, Oriental Mindoro.

Location of Center (as of 10:00 a.m.)	in the vicinity of Pinamalayan, Oriental Mindoro
Coordinates:	13.0°N, 121.6°E
Strength:	Maximum sustained winds of 140 kph near the center and gustiness of up to 170 kph
Movement:	Forecast to move West at 15 kph .
Forecast Positions/Outlook:	<ul style="list-style-type: none">- 24 hour (tomorrow morning): 250 km West of Calapan City, Oriental Mindoro - 48 hour (Thursday morning): 320 km West of Coron, Palawan - 72 hour (Friday morning): 430 km Northwest of Puerto Princesa City, Palawan (Outside PAR) - 96 hour (Saturday morning): 850 km West Southwest of Puerto Princesa City, (Outside PAR)

PSWS	Luzon	Visayas	Mindanao
<p align="center">3</p> <p align="center">(121-170 kph</p> <p align="center">Expected in 18hrs.)</p>	<p align="center">Calamian group of Islands, Oriental Mindoro and Occidental Mindoro including Lubang Island</p>		
<p align="center">2</p> <p align="center">(61-120kph</p> <p align="center">Expected in 24 hrs.)</p>	<p align="center">Marinduque, Romblon and Batangas</p>		

<p align="center">1</p> <p align="center">(30-60kph</p> <p align="center">Expected in 36 hrs.)</p>	<p align="center">Metro Manila, Bataan, Bulacan, Cavite, Laguna, Rizal, Quezon, Burias Island and Northern Palawan including Cuyo Island</p>	<p align="center">Aklan and Antique</p>	
-------------------------------------------------------------------------------------------------------------------------	----------------------------------------------------------------------------------------------------------------------------------------------	-----------------------------------------	--

- Estimated rainfall amount is from moderate to heavy within the 250 km diameter of the Typhoon.
- Flash floods and landslides are expected over the areas under signals # 2 and 3, while storm surges of up to 2 meters are possible.
- Nona is expected to cross Mindoro and will be over the West Philippine Sea this afternoon.
- Meanwhile, as of 8:00 AM, a Low Pressure Area (LPA) was estimated at 1800 km East Southeast of Mindanao (5.5°N, 142.5°E).
- PSWS elsewhere has now been lifted. The public and the disaster risk reduction and management council concerned are advised to take appropriate actions and watch for the next Severe Weather Bulletin to be issued at 5 PM today.

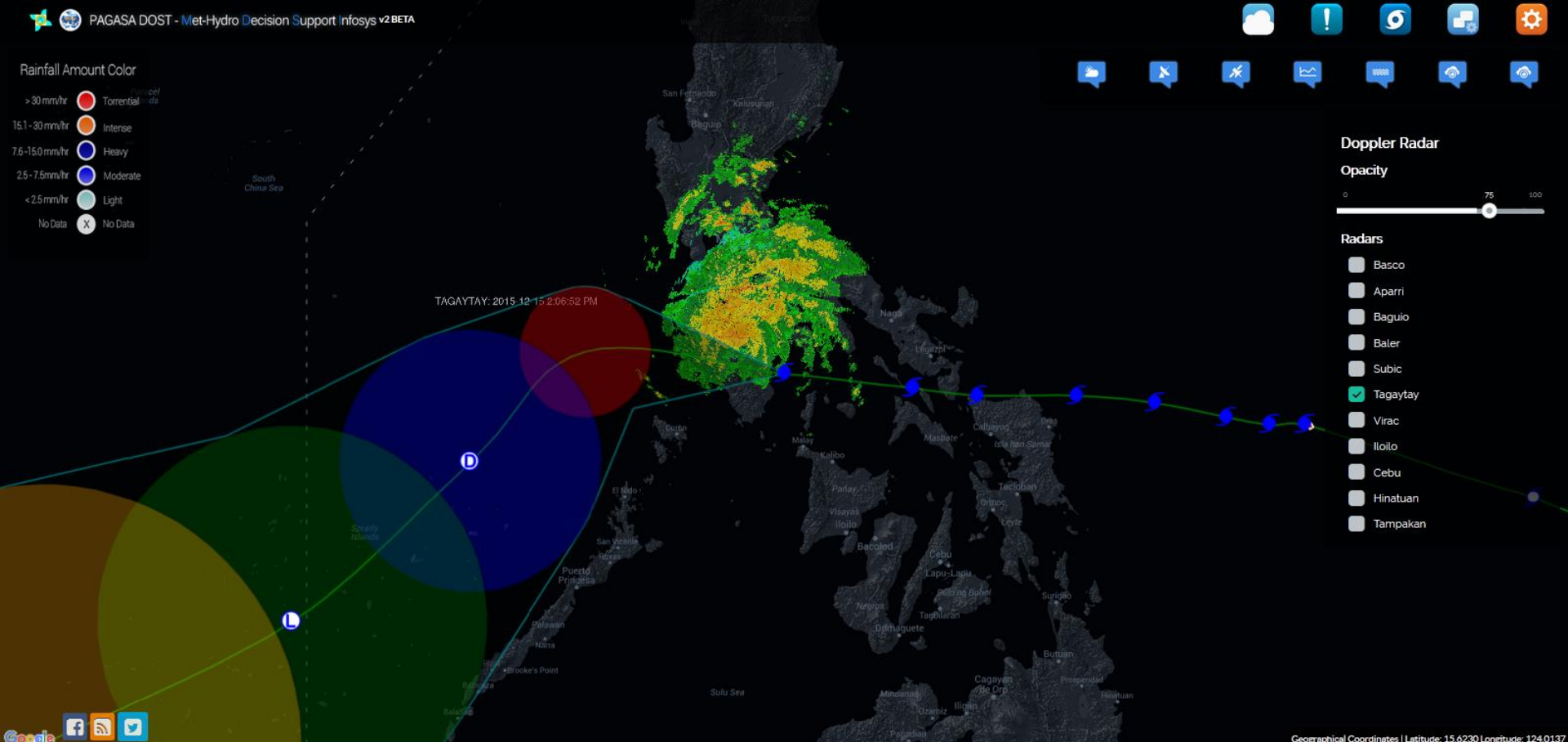




TAGAYTAY: 2015-12-15 11:37:41 AM

Rainfall Amount Color

- > 30 mm/hr ● Torrential
- 15.1 - 30 mm/hr ● Intense
- 7.6 - 15.0 mm/hr ● Heavy
- 2.5 - 7.5 mm/hr ● Moderate
- < 2.5 mm/hr ● Light
- No Data ● No Data



Doppler Radar

Opacity

0 75 100

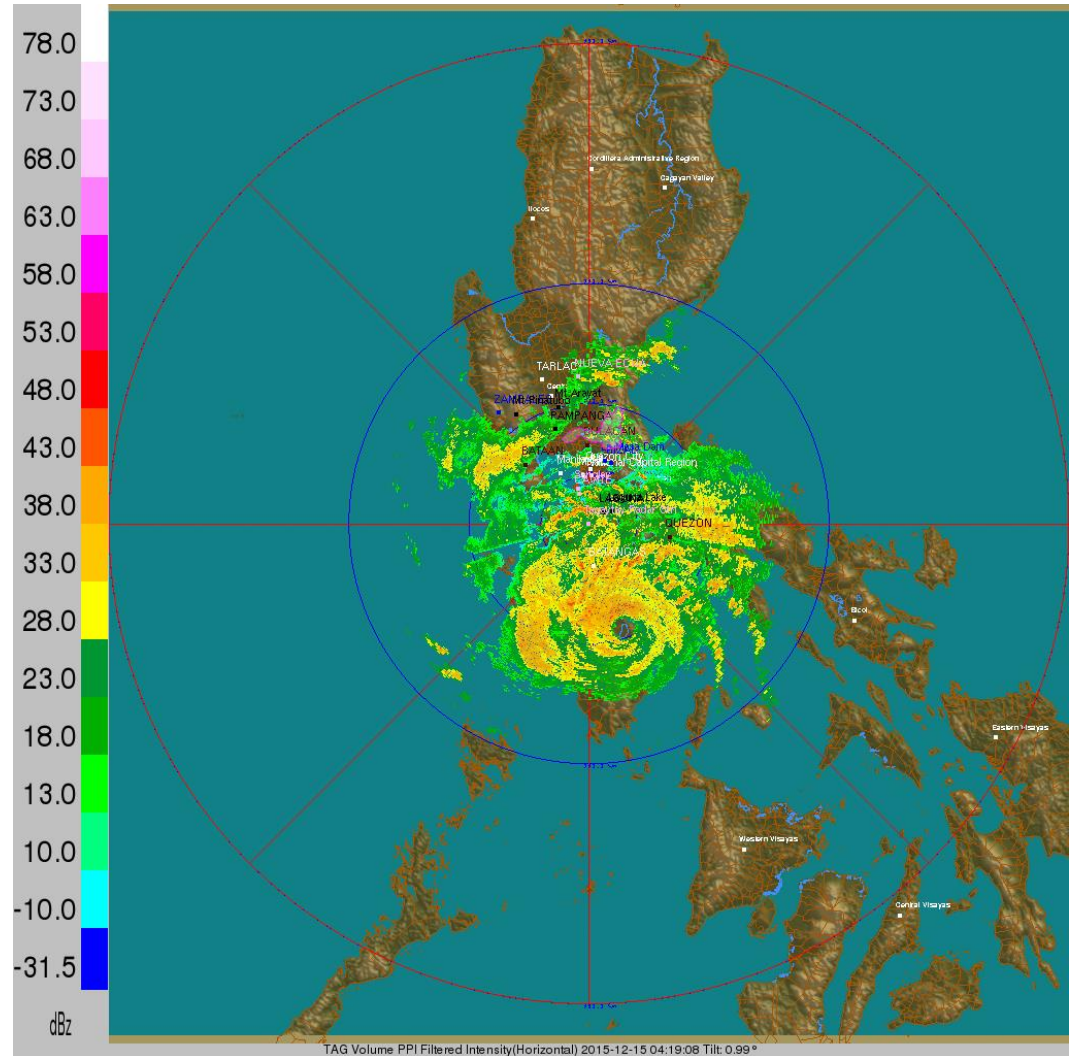
- Radars**
- Basco
 - Aparri
 - Baguio
 - Baler
 - Subic
 - Tagaytay
 - Virac
 - Iloilo
 - Cebu
 - Hinatuan
 - Tampakan

TAGAYTAY: 2015-12-15 2:06:52 PM

NONA as seen by the Tagaytay Doppler radar.

NONA has already made 5
landfalls since yesterday.

- **DEC 14, 11AM** – Batag Island, Laoang, Northern Samar
- **DEC 14, 4PM** – Bulusan, Sorsogon
- **DEC 14, 9:45PM** – Burias Island.
- **DEC 15, 5:30AM** – Banton Island, Romblon
- **DEC 15, 10:30AM** – Pinamalayan, Oriental Mindoro



What to expect...

- **Stormy weather** over MIMAROPA today.
- **Storm surges of up to 2 meters** are possible over the areas under **PSWS #2 and #3**.
- Heavy to at times intense rains within the **250 km** diameter of the typhoon.
- All residents living in the areas under PSWS are alerted for possible flashfloods and landslides.



Thank You

