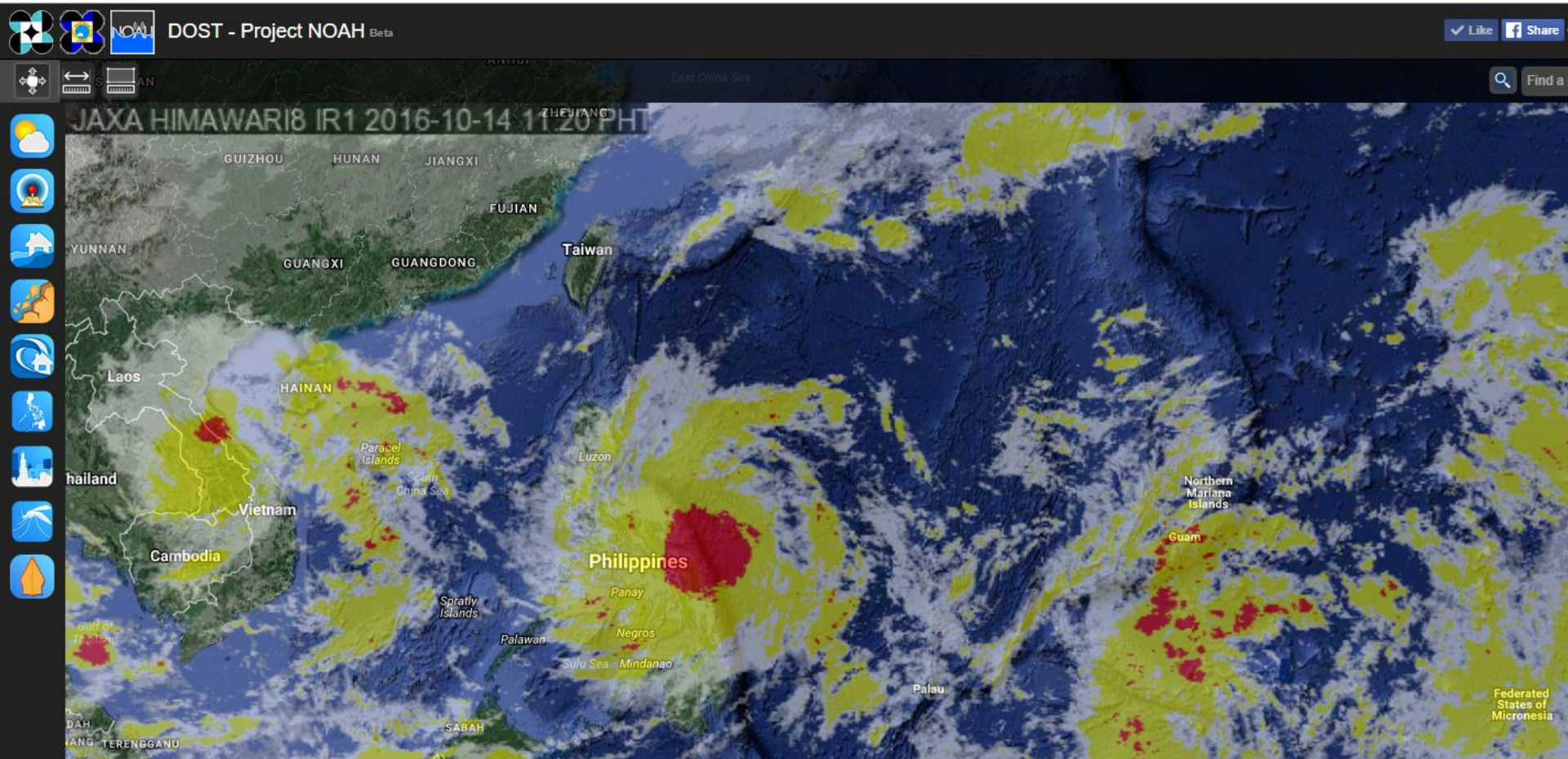


# **PAGASA-NOAH Hazard Impact Analysis for Tropical Storm Karen**

Based on GSM  
Initialized October 14, 2016

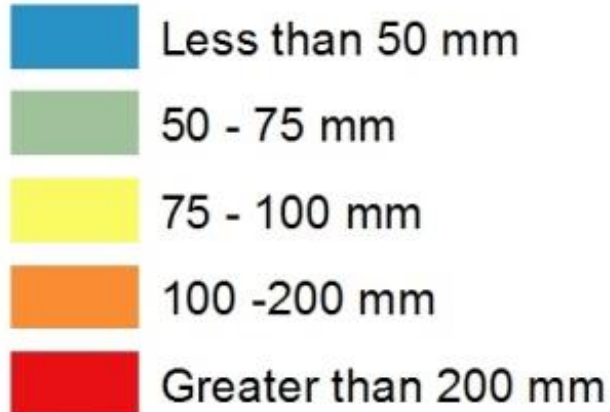


# HIMAWARI

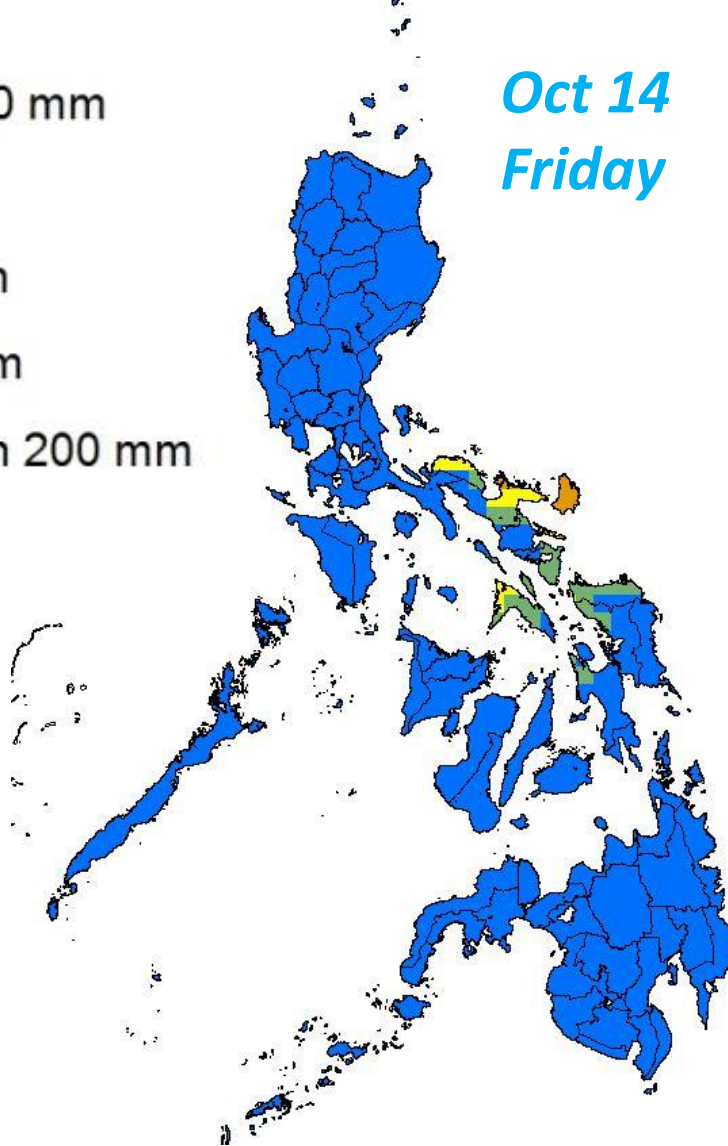


# GSM

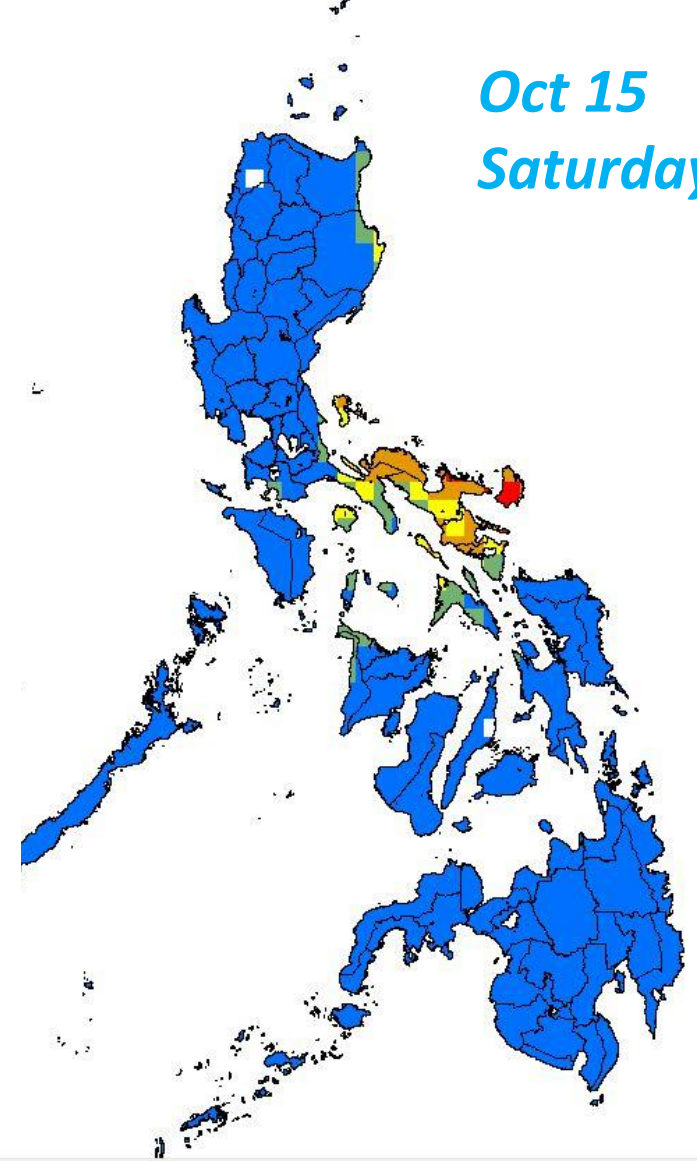
## Accumulated Rainfall Forecast



*Oct 14  
Friday*



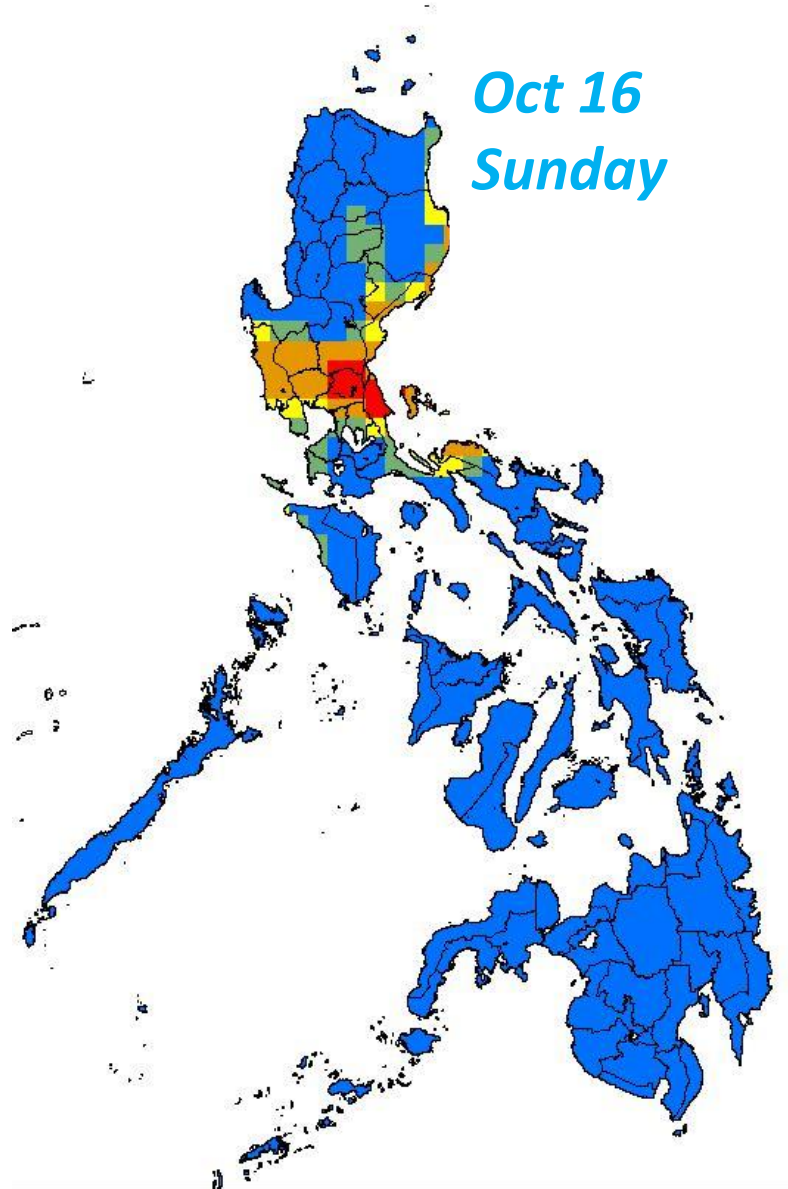
*Oct 15  
Saturday*





# GSM

## Accumulated Rainfall Forecast



**AREAS WITH  $\geq$  100 mm  
OF RAIN THAT MAY  
TRIGGER LANDSLIDES &  
FLOODS**

*Based on  
GSM*

**218**  
**Municipalities in**  
**7** regions

