

# **PAGASA-NOAH Hazard Impact Analysis for Typhoon Karen**

Based on GSM  
Initialized October 13, 2016 02:00 PST

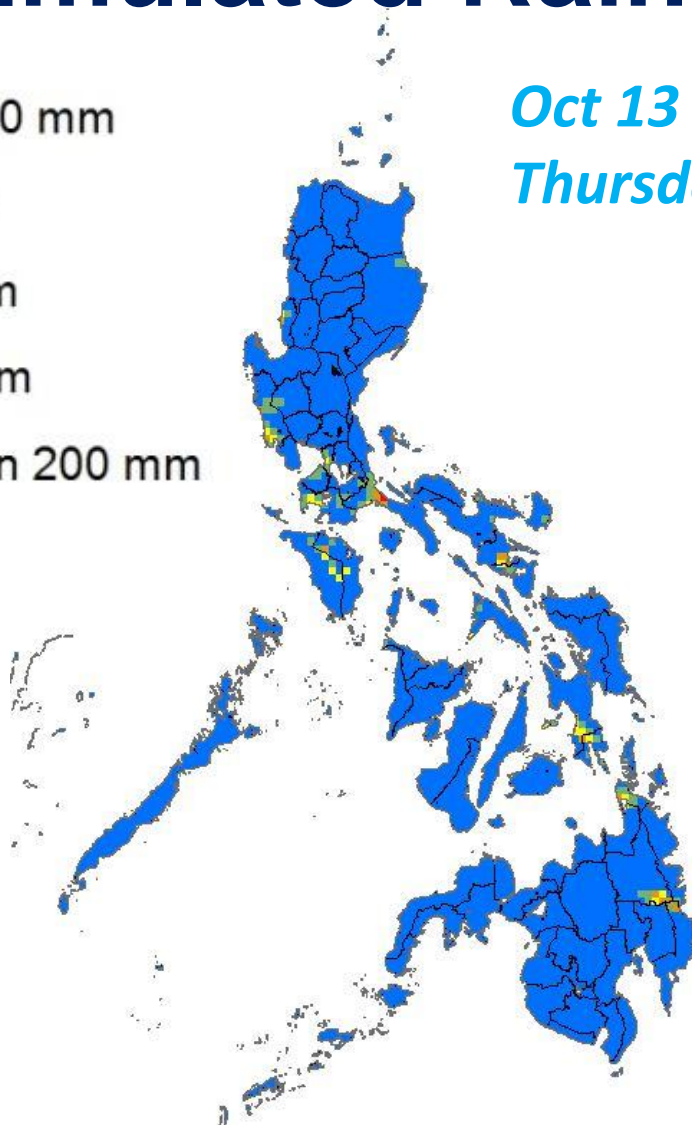


# GSM

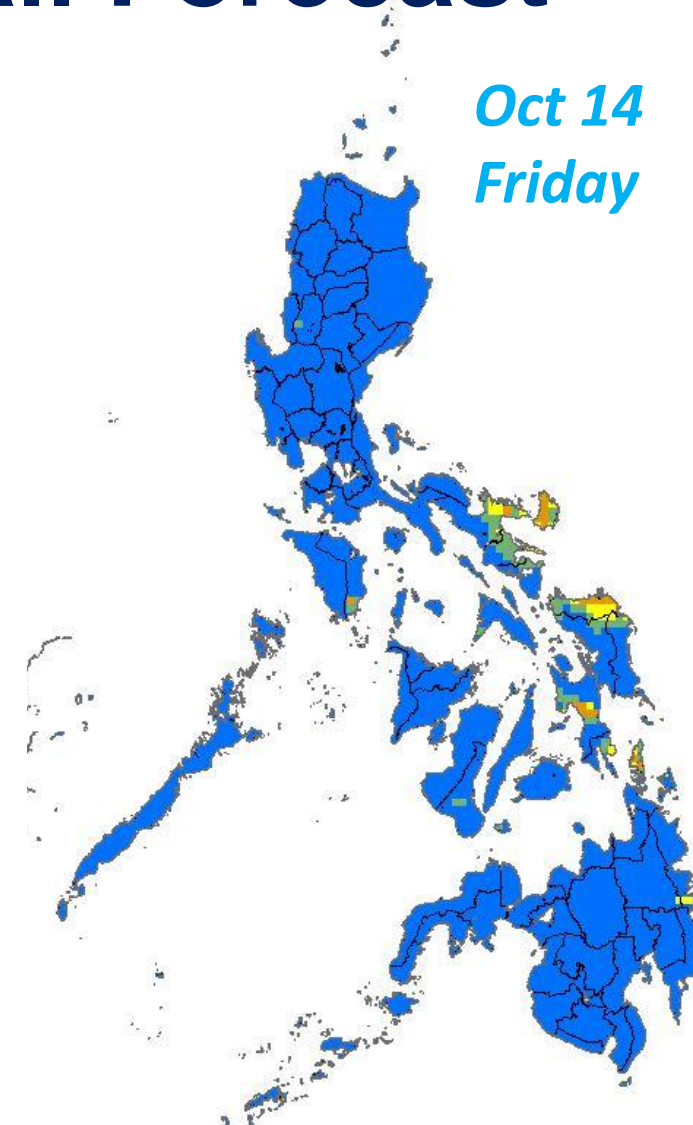
## Accumulated Rainfall Forecast



*Oct 13*  
*Thursday*



*Oct 14*  
*Friday*

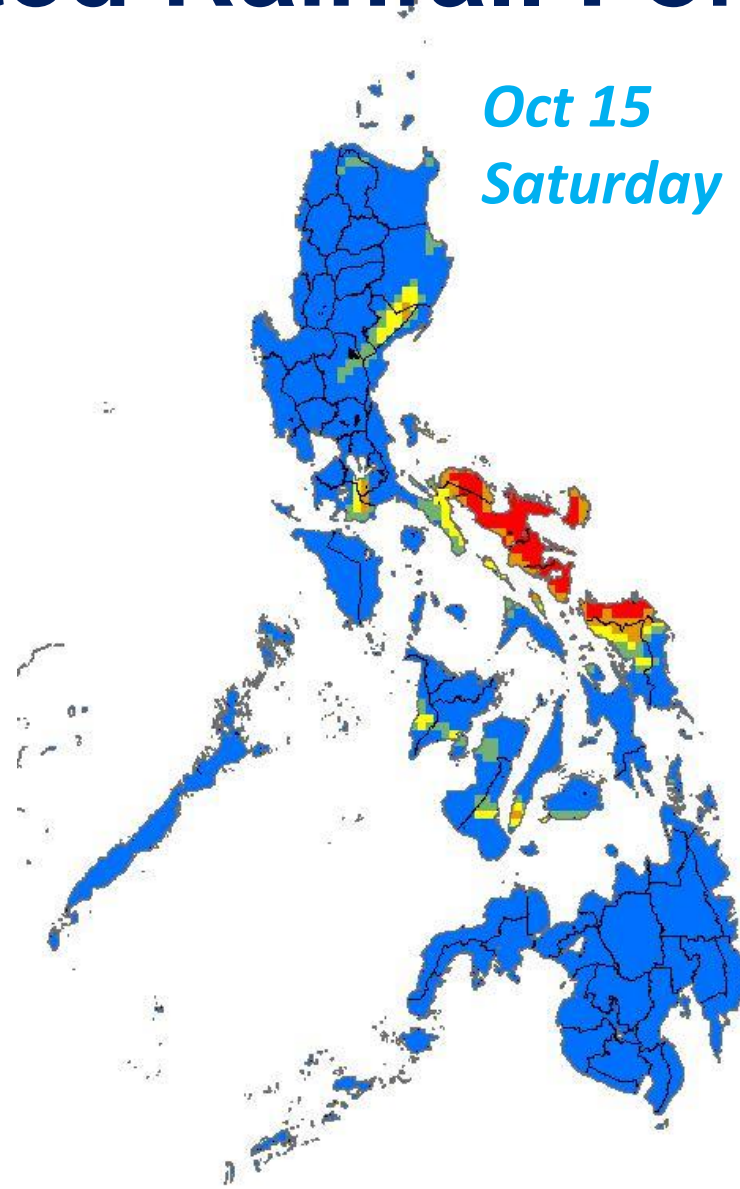


# GSM

## Accumulated Rainfall Forecast

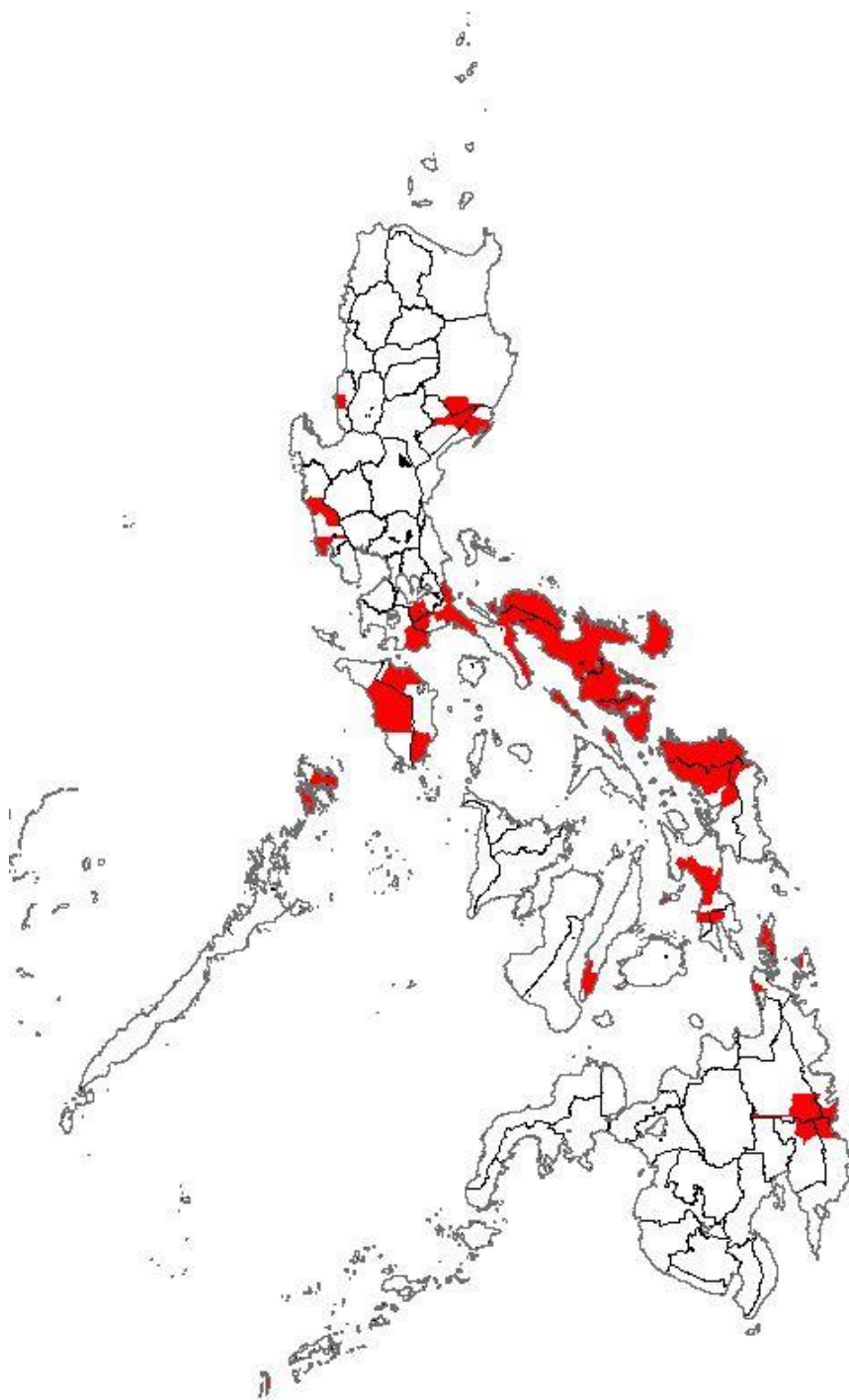


*Oct 15  
Saturday*



**AREAS WITH  $\geq$  100 mm  
OF RAIN THAT MAY  
TRIGGER LANDSLIDES &  
FLOODS**

*Based on  
GSM*



**223**

**Municipalities in**

**11** regions

# EXPOSURE ANALYSIS FOR HEAVY RAINFALL

<b>Population (2016 estimate)</b>	<b>10,832,187</b>
<b>Number of Households (est.)</b>	<b>2,291,470</b>

*Source: 2015 Census of Population and Housing (PSA)*

# EXPOSURE ANALYSIS FOR HEAVY RAINFALL

<b>Male (2016 estimate)</b>	<b>5,524,993</b>
<b>Female( 2016 estimate)</b>	<b>5,307,194</b>

*Source: 2015 Census of Population and Housing (PSA)*

# VULNERABILITY ANALYSIS FOR HEAVY RAINFALL

<b>Infants (0-2 yo)</b>	<b>761,700</b>
<b>Toddlers (3-10 yo)</b>	<b>2,109,094</b>
<b>Children (11-15 yo)</b>	<b>1,045,927</b>
<b>Senior Citizens</b>	<b>794,047</b>

*Source: 2015 Census of Population and Housing (PSA)*

# VULNERABILITY ANALYSIS FOR HEAVY RAINFALL

<b>Poor Households (2016)</b>	<b>633,565</b>
<b>Poor Families (2016)</b>	<b>714,670</b>
<b>Poor Individuals</b>	<b>3,833,138</b>

*Source: DSWD*



# VULNERABILITY ANALYSIS FOR HEAVY RAINFALL

Roof Materials	Number of Buildings
Cogon/Nipa/Anahaw	649,441
Wood	23,316
Makeshift/Salvaged/Improvised	9,700
Asbestos	741

*Source: 2015 Census of Population and Housing (PSA)*