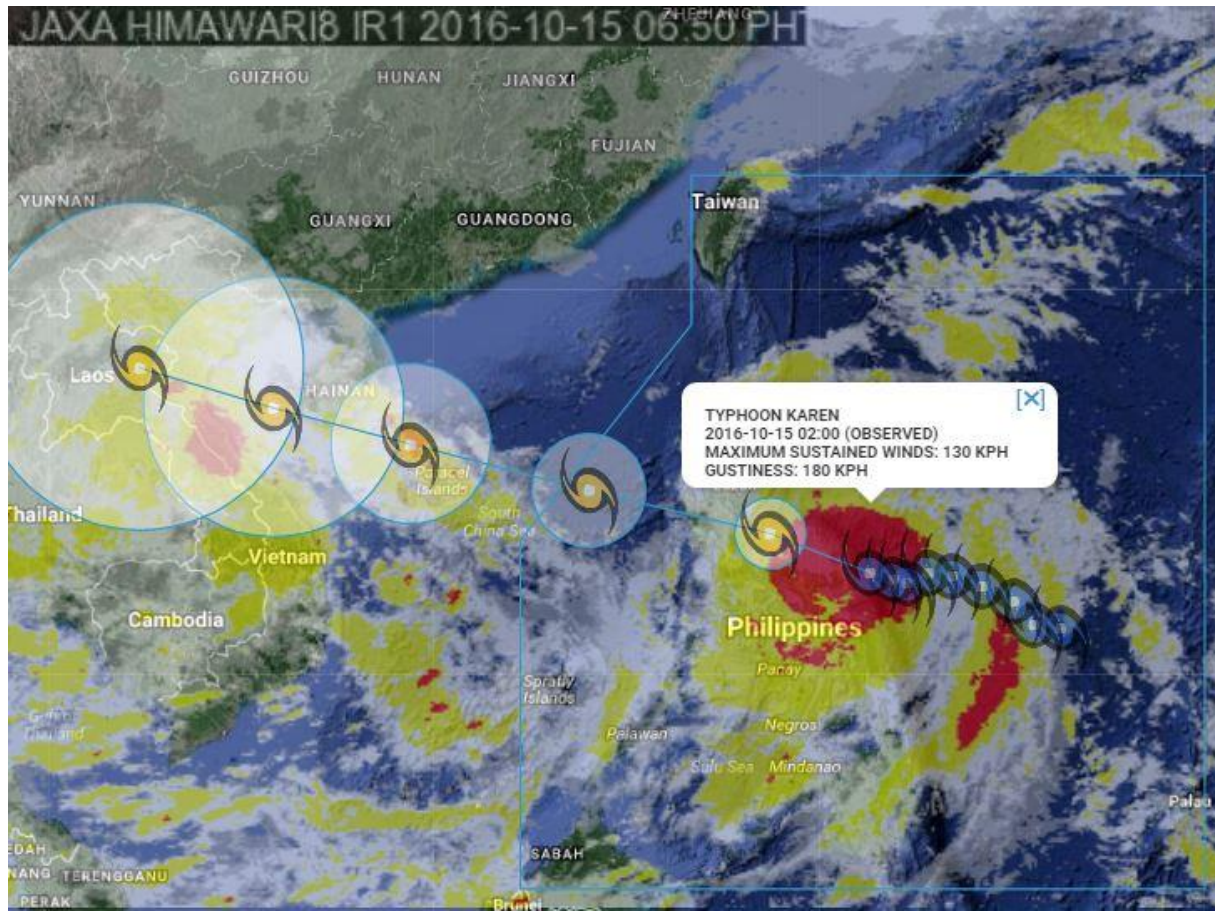


# **PAGASA-NOAH Hazard Impact Analysis for Typhoon Karen**

Based on PAGASA WRF  
Initialized October 15, 2016 02:00 AM PST

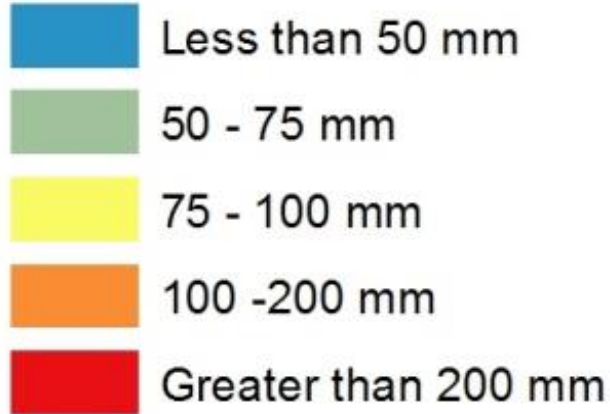


# PAGASA Forecast Storm Track

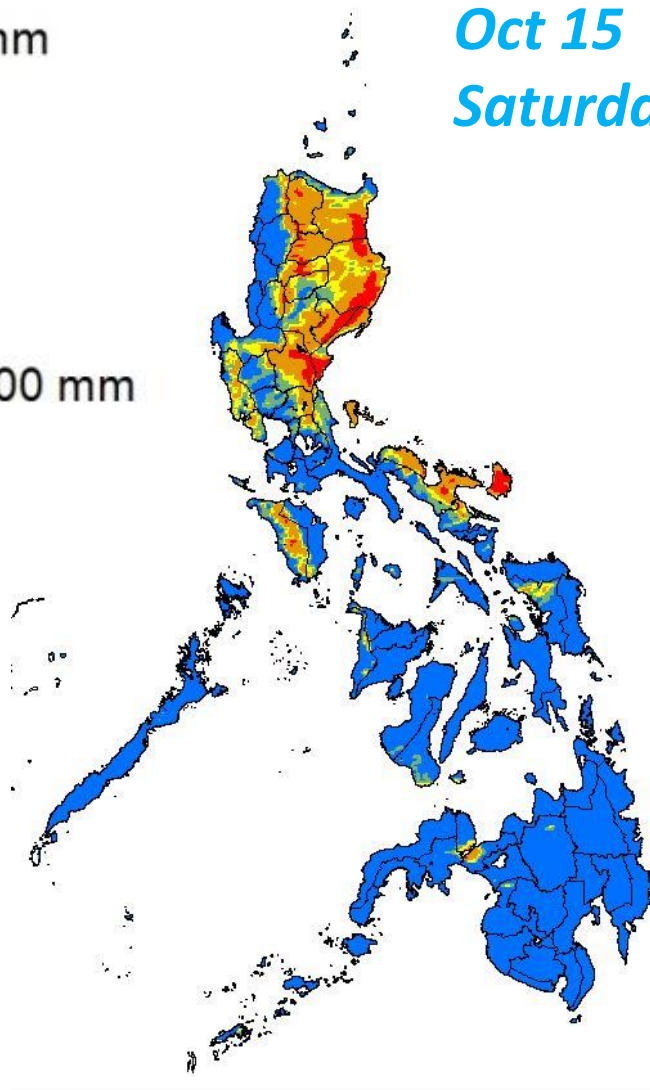


# PAGASA WRF

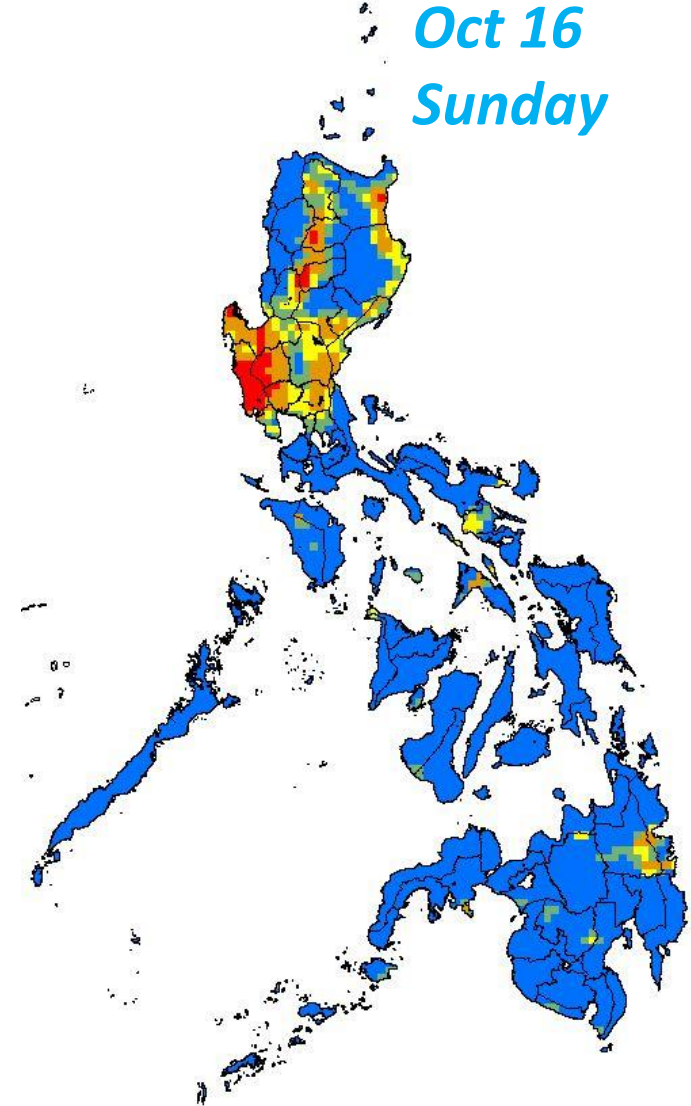
## Accumulated Rainfall Forecast



*Oct 15*  
*Saturday*



*Oct 16*  
*Sunday*

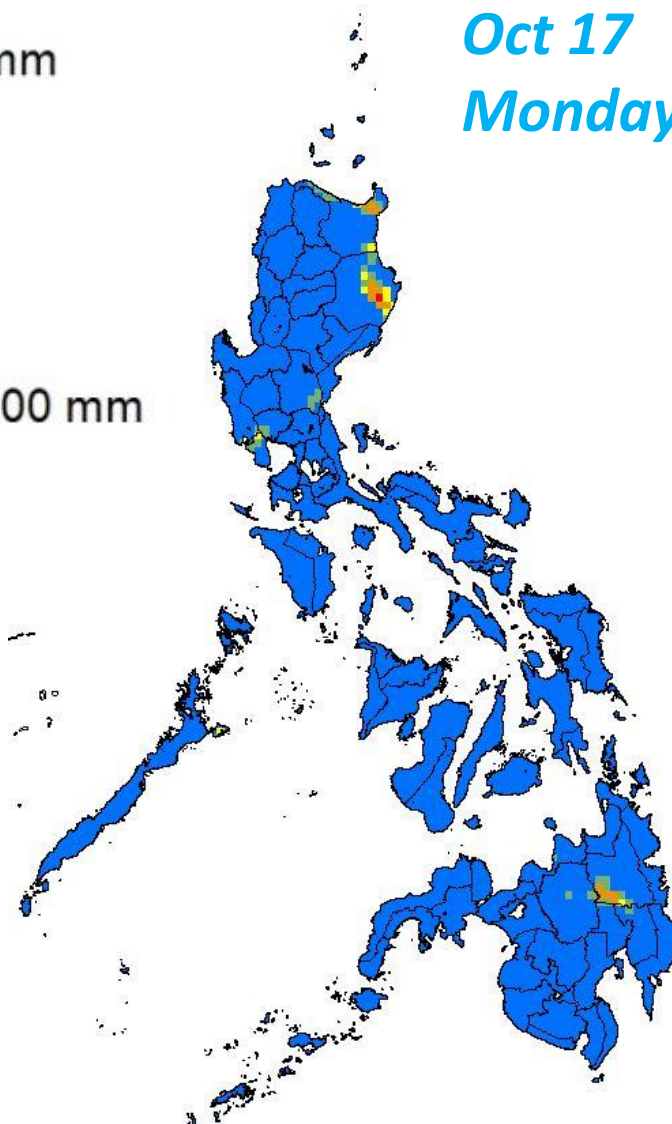


# PAGASA WRF

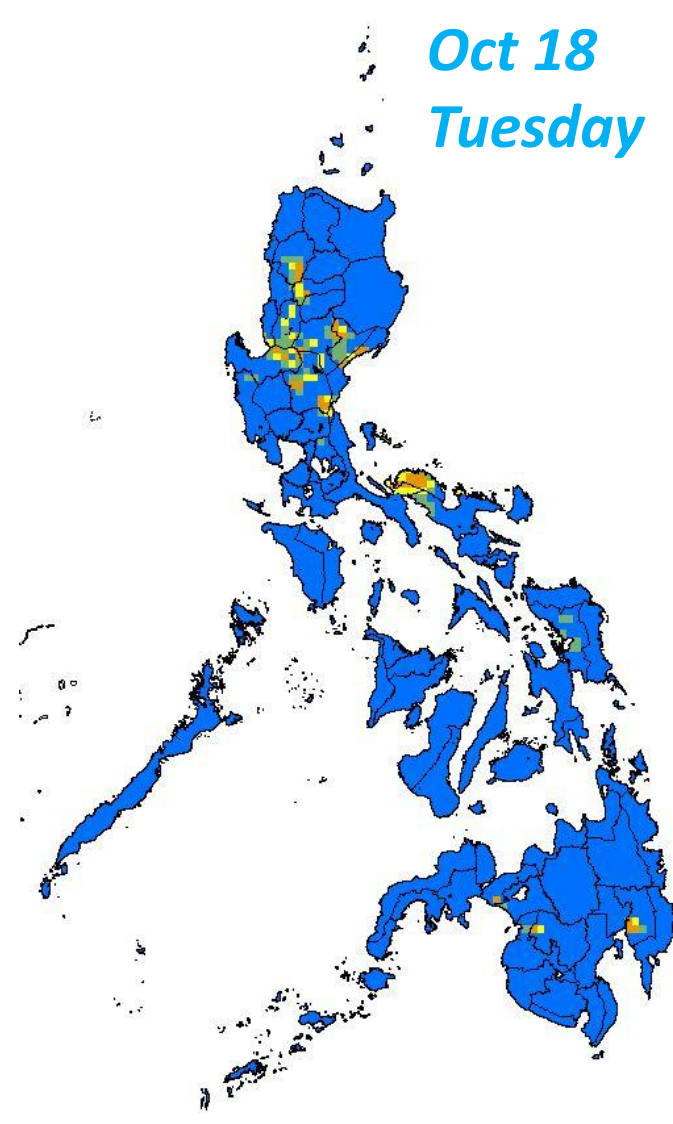
## Accumulated Rainfall Forecast



*Oct 17*  
*Monday*



*Oct 18*  
*Tuesday*

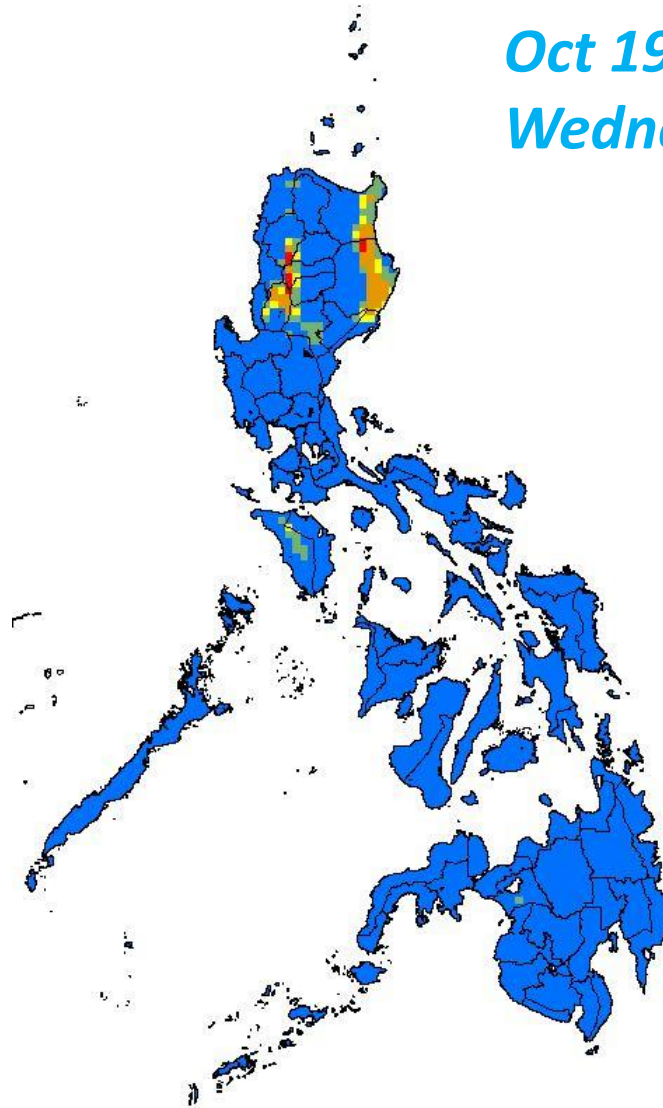
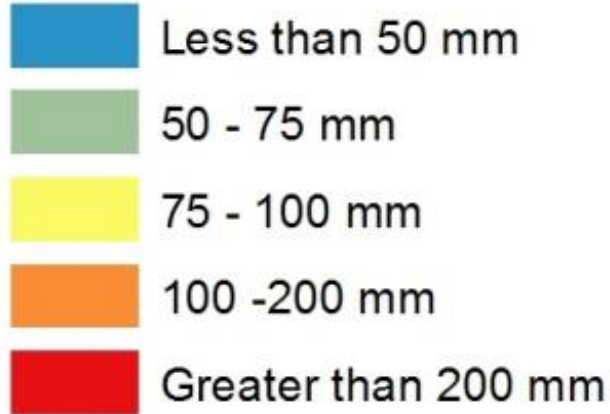




# PAGASA WRF

## Accumulated Rainfall Forecast

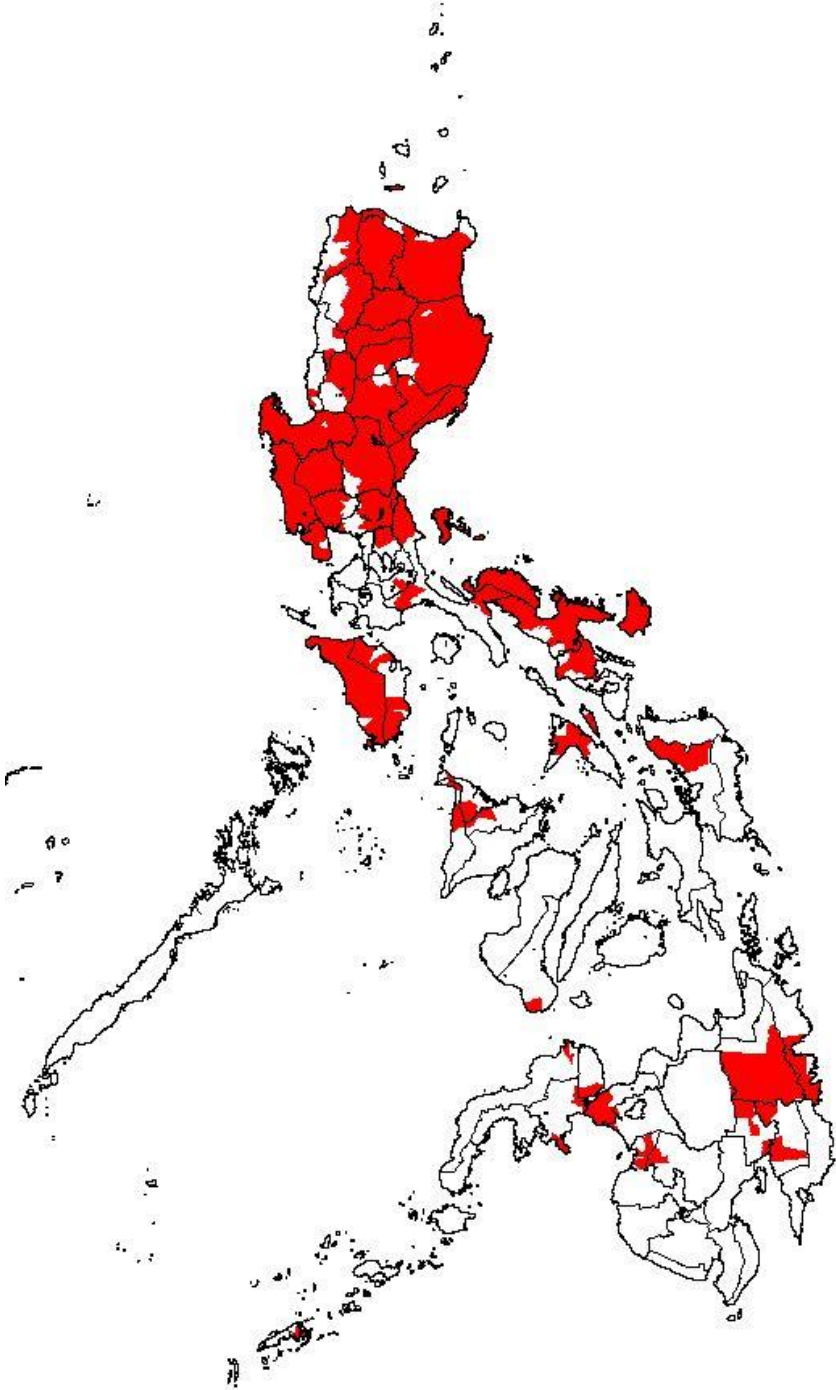
*Oct 19  
Wednesday*

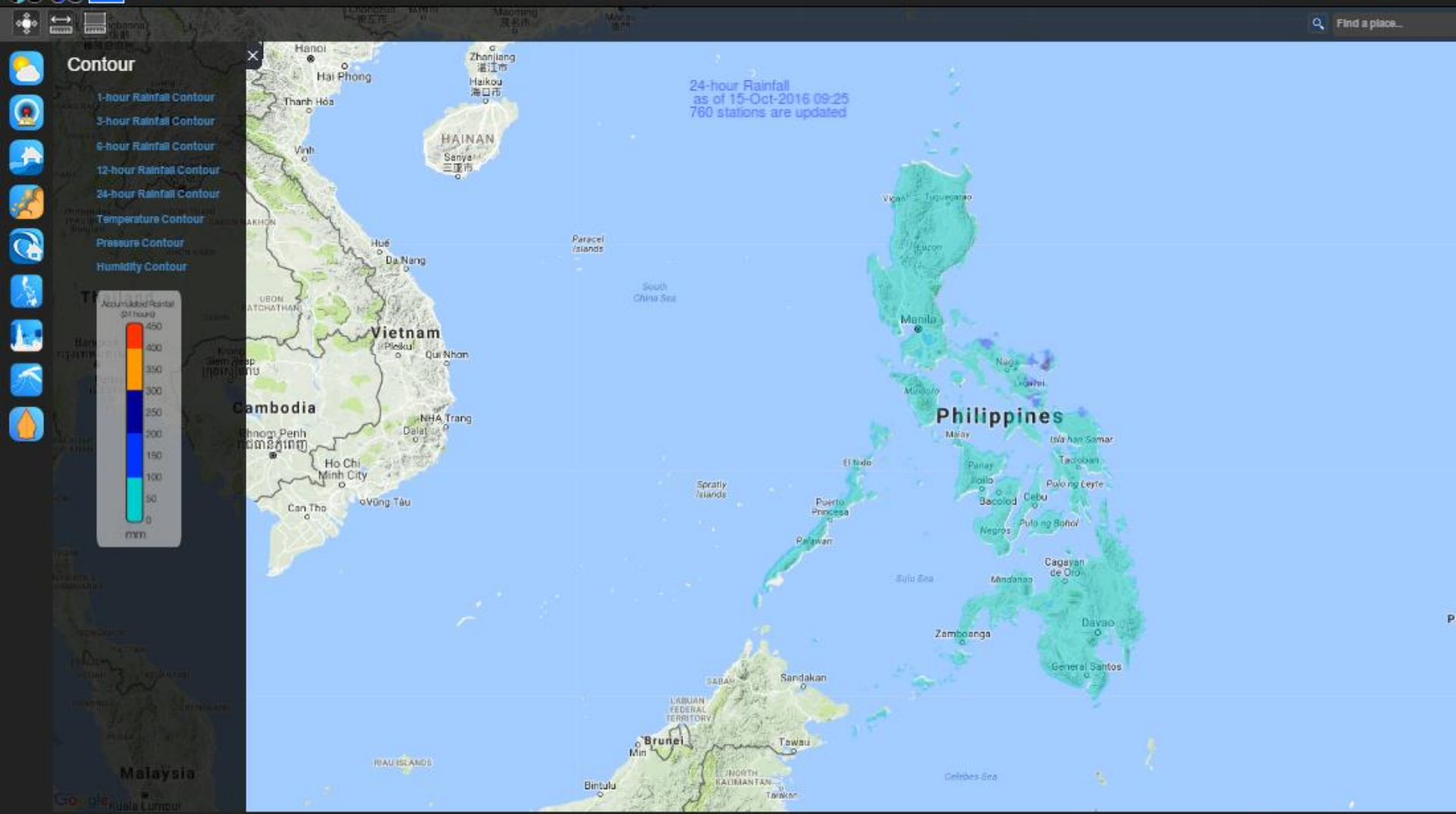


# AREAS WITH $\geq 100$ mm OF RAIN THAT MAY TRIGGER LANDSLIDES & FLOODS

*Based on  
PAGASA WRF*

**457**  
Municipalities in  
**16** regions





# Storm Surge Forecast

## Initialized 2016Oct15 0200 PST

Storm Surge Forecast		
JMA Best track data		
Initialization time: 15 Oct. 2016, 2AM PHT		
Station Name	Storm Surge (m)	SSA
Quezon Quezon	3.1	2
Calauag Quezon	3.1	2
Lopez Quezon	3	2
Gumaca Quezon	3	2
Tinambac Camarines Sur	2.8	1
Calabanga Camarines Sur	2.8	1
Paombong Bulacan	2.6	1
Masantol Pampanga	2.6	1
Libon Albay	2.6	1
Hagonoy Bulacan	2.6	1
Dinalungan Aurora	2.6	1
Casiguran Aurora	2.6	1
Bato Camarines Sur	2.6	1
Abucay Bataan	2.6	1
Siruma Camarines Sur	2.5	1
Malolos Bulacan	2.5	1
Cabusao Camarines Sur	2.5	1
Bulacan Bulacan	2.5	1
Del Gallego Camarines Sur	2.4	1
Caramoan Camarines Sur	2.4	1
Balatan Camarines Sur	2.4	1
Balanga Bataan	2.4	1
Sta. Elena Camiguin	2.3	1
Oas Albay	2.3	1
Guinayangan Quezon	2.3	1
Sipocot Camarines Sur	2.2	1
Ragay Camarines Sur	2.2	1
Obando Bulacan	2.2	1
Navotas Metropolitan Manila	2.2	1
Manila Metro Manila	2.2	1
Catanauan Quezon	2.2	1
Alabat Quezon	2.2	1
Sn Pascual Masbate	2.1	1
Plaridel Quezon	2.1	1
Mercedes Camiguin	2.1	1
Ligao Albay	2.1	1
Garchitorena Camarines Sur	2.1	1
Pitogo Quezon	2	1
Magallanes Sorsogon	2	1
Claveria Masbate	2	1



**Storm Surge Advisory 2**

**STORM SURGE HAZARD**

	<b>HIGH</b>
	<b>MEDIUM</b>
	<b>LOW</b>

Storm Surge Hazard maps based on predicted storm surge height; SSA 2: 3m storm surge height

**NOTE:** Administrative boundaries are from NSO (2015).

