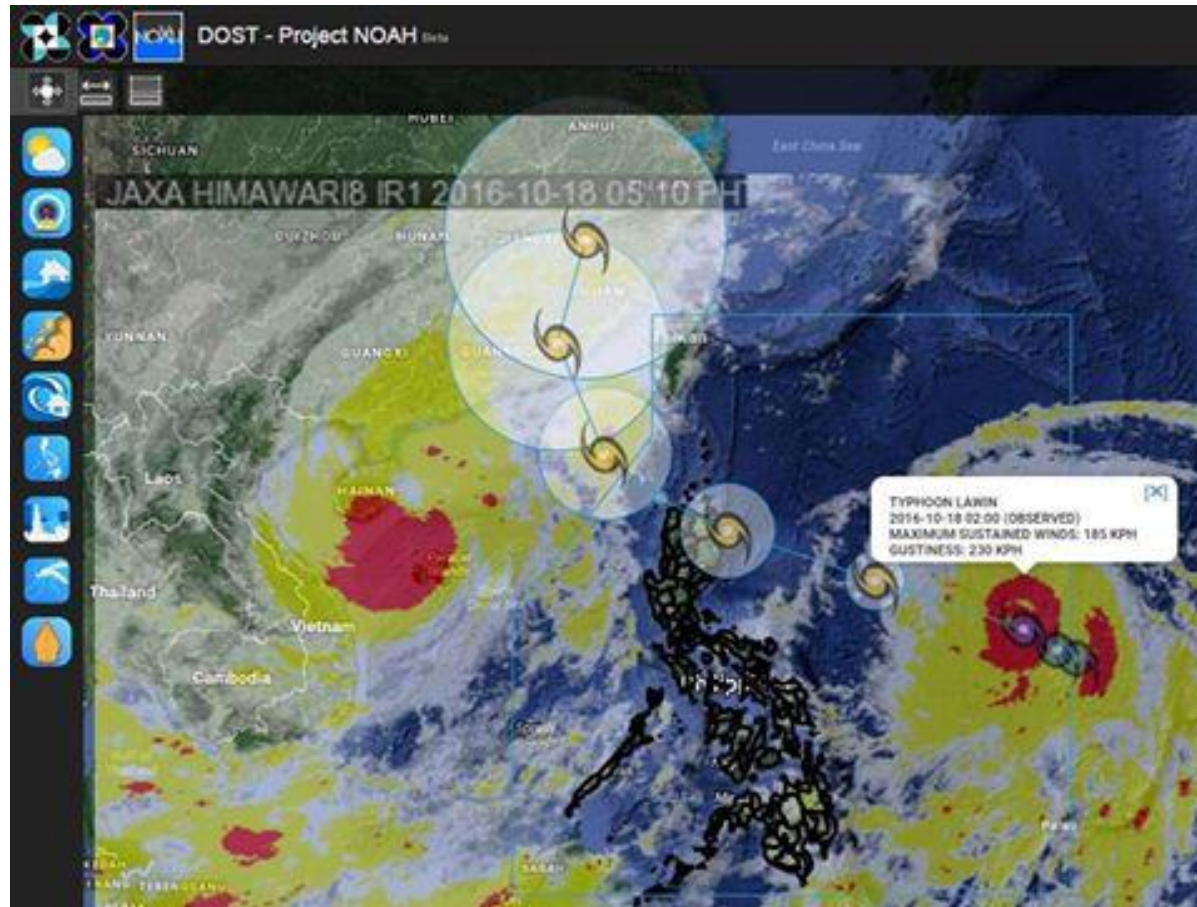


PAGASA-NOAH Hazard Impact Analysis for Typhoon Lawin

Based on PAGASA WRF
Initialized October 18, 2016 02:00 AM PST

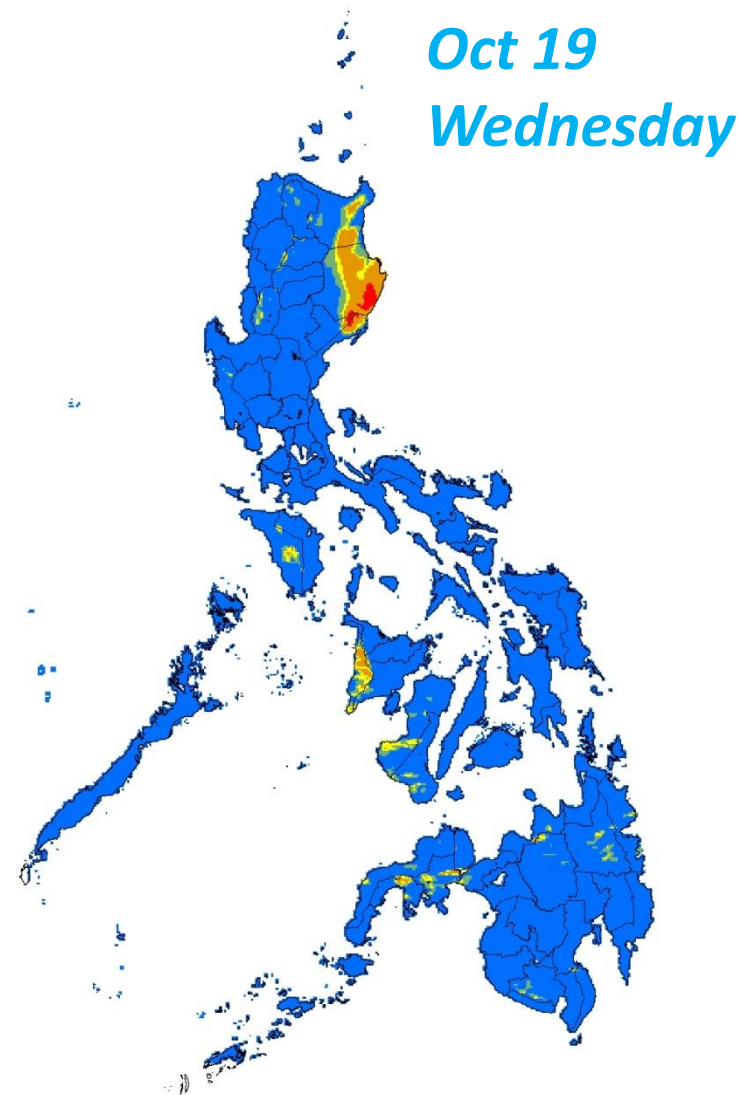
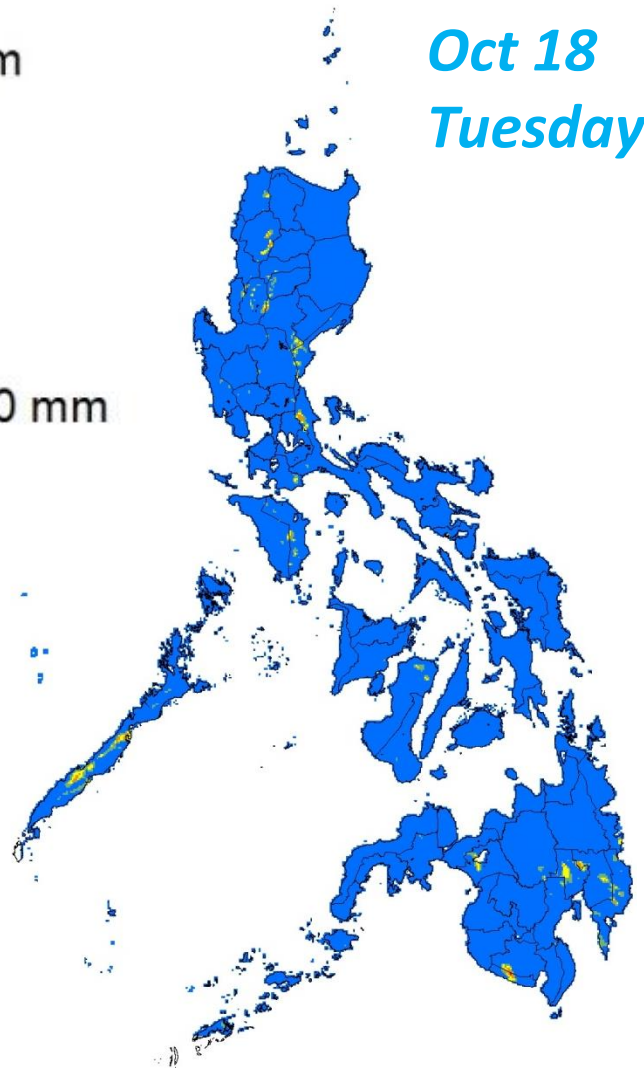
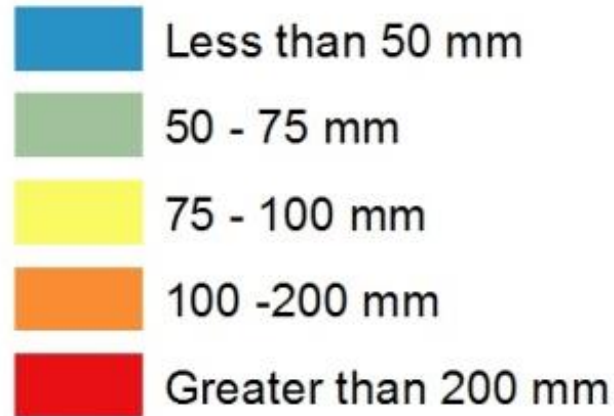


PAGASA Forecast Storm Track



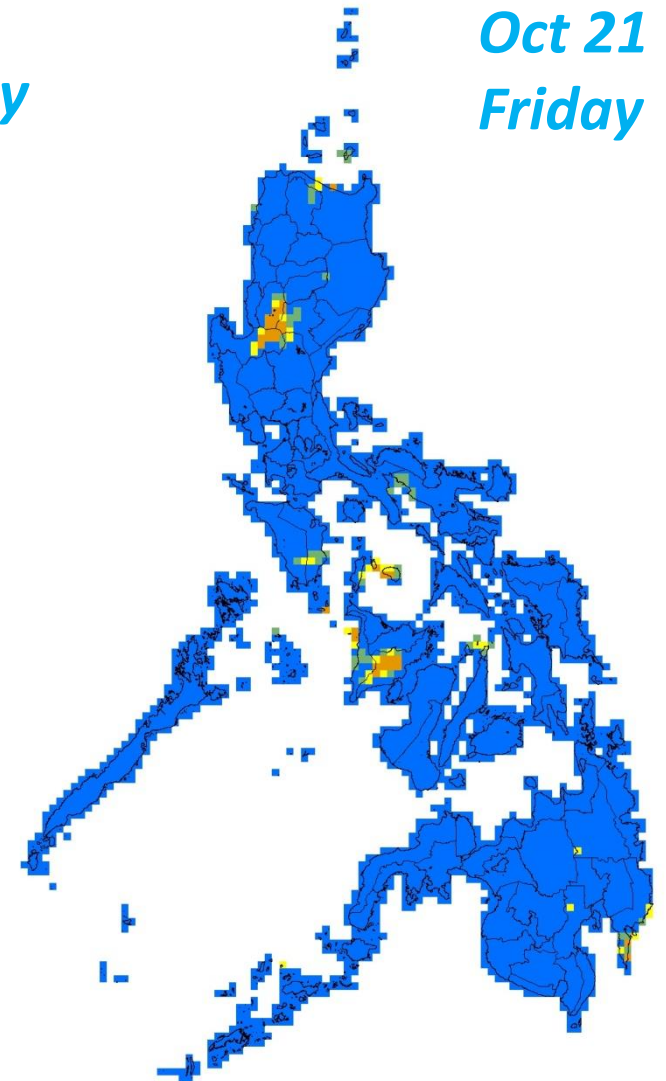
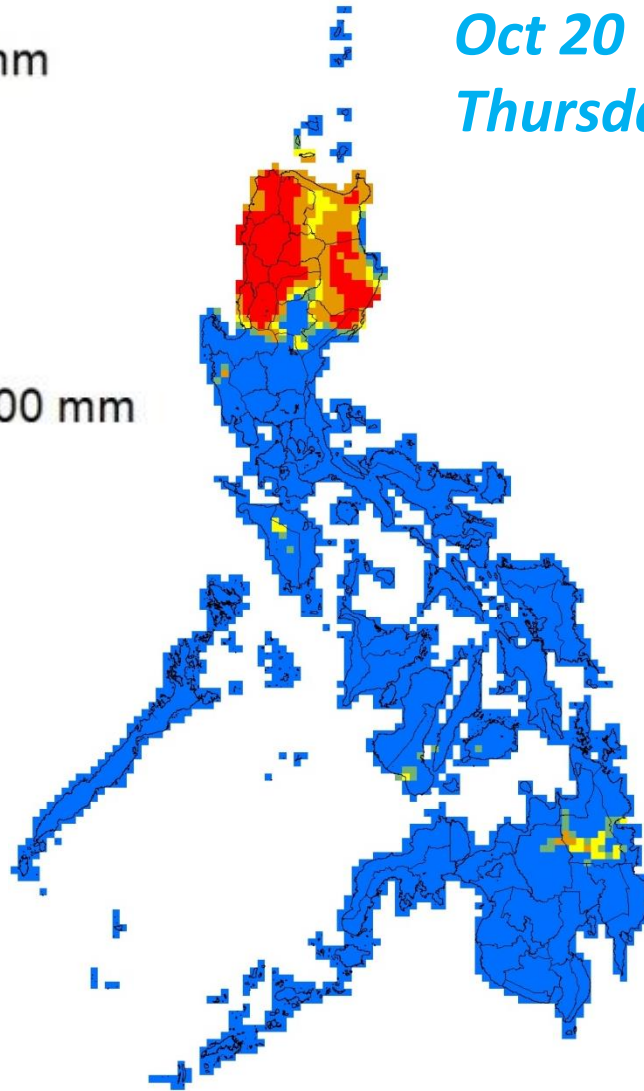
PAGASA WRF

Accumulated Rainfall Forecast



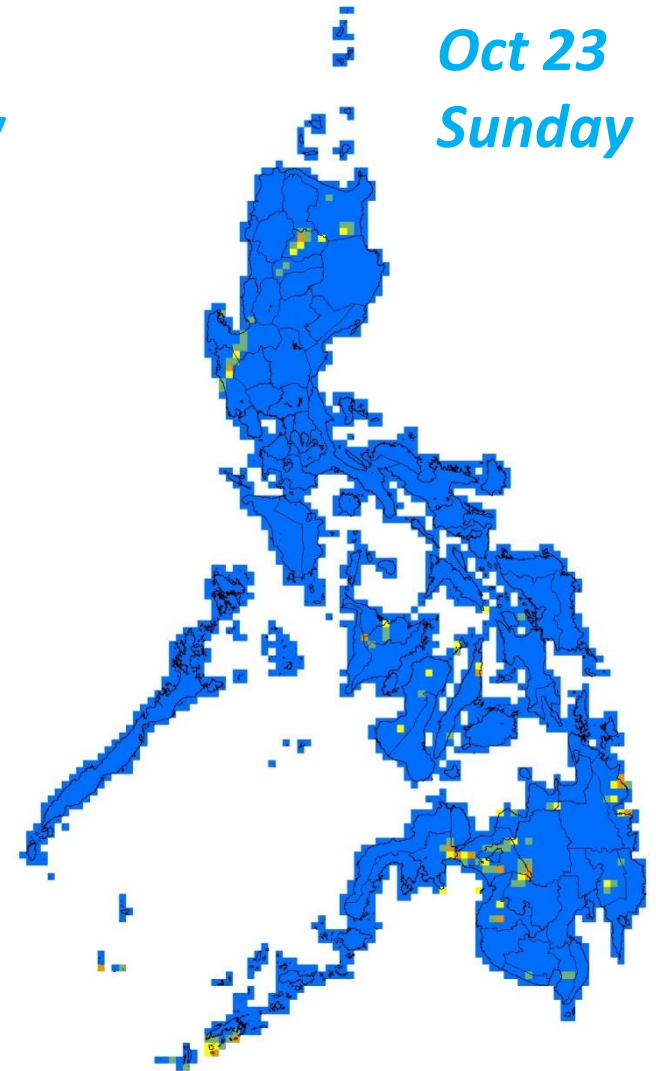
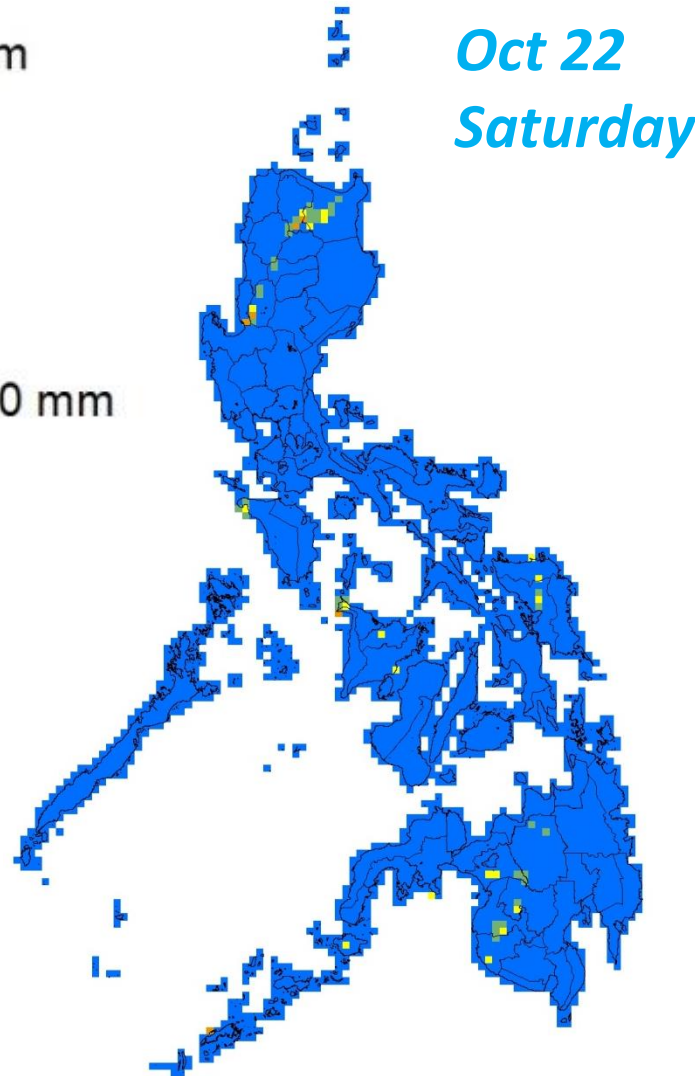
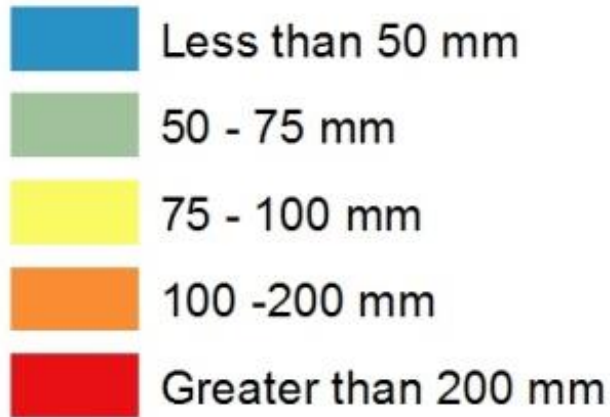
PAGASA WRF

Accumulated Rainfall Forecast



PAGASA WRF

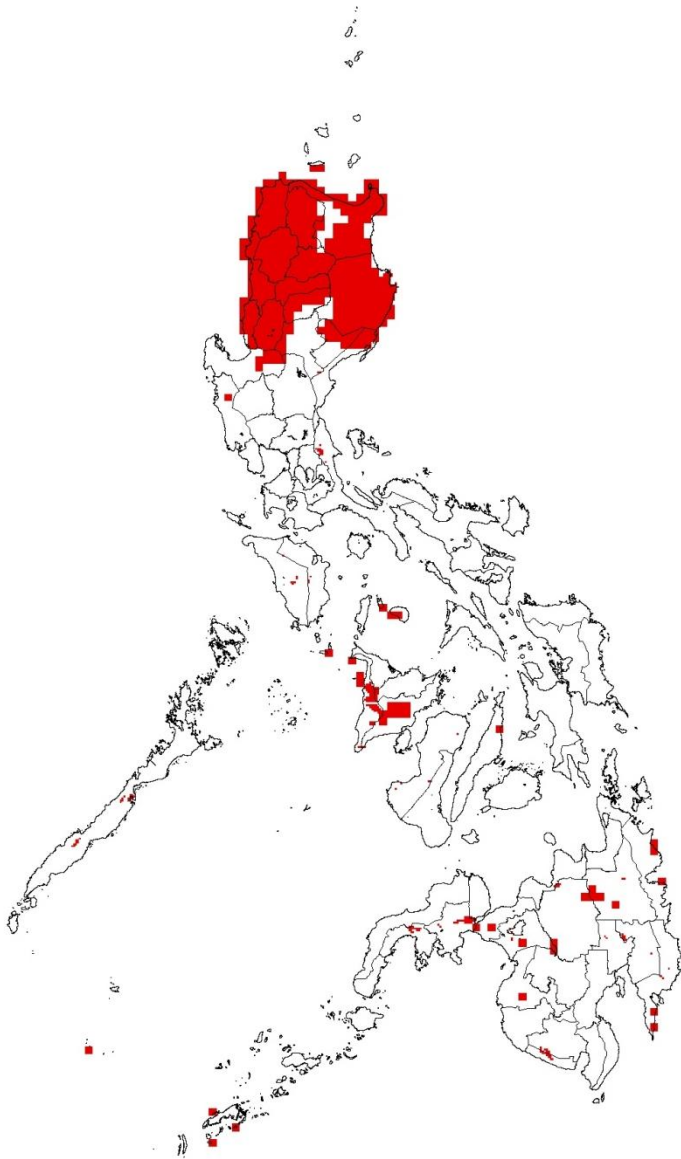
Accumulated Rainfall Forecast



AREAS WITH ≥ 100 mm OF RAIN THAT MAY TRIGGER LANDSLIDES & FLOODS

*Based on
PAGASA WRF*

404
Municipalities in
15 regions



EXPOSURE ANALYSIS FOR HEAVY RAINFALL

| | |
|------------------------------------|------------------|
| Population (2016 estimate) | 9 550 856 |
| Number of Households (est.) | 2 083 856 |

Source: 2015 Census of Population and Housing (PSA)

EXPOSURE ANALYSIS FOR HEAVY RAINFALL

| | |
|-------------------------------|------------------|
| Male (2016 estimate) | 4 860 593 |
| Female(2016 estimate) | 4 690 264 |

Source: 2015 Census of Population and Housing (PSA)

VULNERABILITY ANALYSIS FOR HEAVY RAINFALL

| | |
|----------------------------|------------------|
| Infants (0-2 yo) | 635 576 |
| Toddlers (3-10 yo) | 1 720 004 |
| Children (11-15 yo) | 828 455 |
| Senior Citizens | 6903 28 |

Source: 2010 Census of Population and Housing (PSA)

VULNERABILITY ANALYSIS FOR HEAVY RAINFALL

| | |
|-------------------------------|------------------|
| Poor Households (2016) | 556 160 |
| Poor Families (2016) | 612 610 |
| Poor Individuals | 3 097 593 |

Source: DSWD

VULNERABILITY ANALYSIS FOR HEAVY RAINFALL

| Roof Materials | Number of Buildings |
|-------------------------------|---------------------|
| Cogon/Nipa/Anahaw | 304 324 |
| Wood | 27 185 |
| Makeshift/Salvaged/Improvised | 5 495 |
| Asbestos | 536 |

Source: 2010 Census of Population and Housing (PSA)