

# HYDROLOGICAL UPDATES

23 December 2016

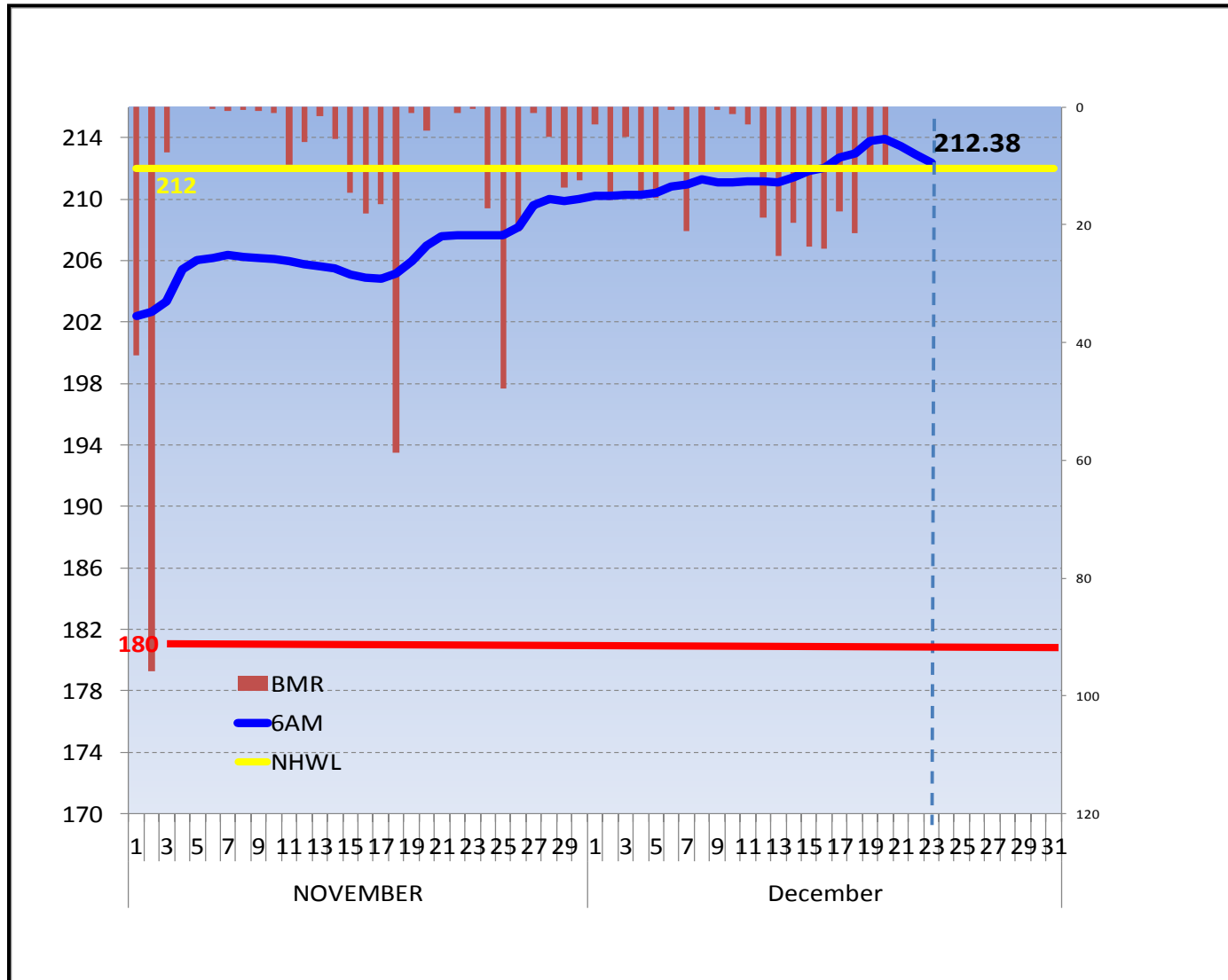
8:00 AM



**DAM UPDATE AS OF DECEMBER 23, 2016 AT 6AM**

<b>DAM</b>	<b>RWL (m)</b>	<b>24-Hr WL Deviation</b>	<b>NHWL (m)</b>	<b>DEVIATION (m)</b>	<b>Rule Curve Elevation (m)</b>	<b>Rule Curve Deviation (m)</b>	<b>Gate Opening</b>
<b>ANGAT</b>	<b>212.38</b>	<b>-0.34</b>	<b>212.00</b>	<b>0.38</b>	<b>206.89</b>	<b>5.49</b>	<b>1 gate/ 0.5 m</b>
<b>IPO</b>	<b>101.07</b>	<b>0.02</b>	<b>101.00</b>	<b>0.07</b>	<b>-</b>	<b>-</b>	
<b>LA MESA</b>	<b>79.10</b>	<b>0.06</b>	<b>80.15</b>	<b>-1.05</b>	<b>-</b>	<b>-</b>	
<b>AMBUKLAO</b>	<b>750.67</b>	<b>0.11</b>	<b>752.00</b>	<b>-1.33</b>	<b>752.00</b>	<b>-1.33</b>	
<b>BINGA</b>	<b>573.94</b>	<b>0.15</b>	<b>575.00</b>	<b>-1.06</b>	<b>574.26</b>	<b>-0.32</b>	
<b>SAN ROQUE</b>	<b>280.87</b>	<b>-0.02</b>	<b>280.00</b>	<b>0.87</b>	<b>275.25</b>	<b>5.62</b>	
<b>PANTABANGAN</b>	<b>207.01</b>	<b>-0.07</b>	<b>221.00</b>	<b>-13.99</b>	<b>211.52</b>	<b>-4.51</b>	
<b>MAGAT</b>	<b>192.52</b>	<b>-0.01</b>	<b>193.00</b>	<b>-0.48</b>	<b>192.75</b>	<b>-0.23</b>	
<b>CALIRAYA</b>	<b>287.29</b>	<b>-0.02</b>		<b>-</b>	<b>-</b>	<b>-</b>	

# ANGAT DAM UPDATE



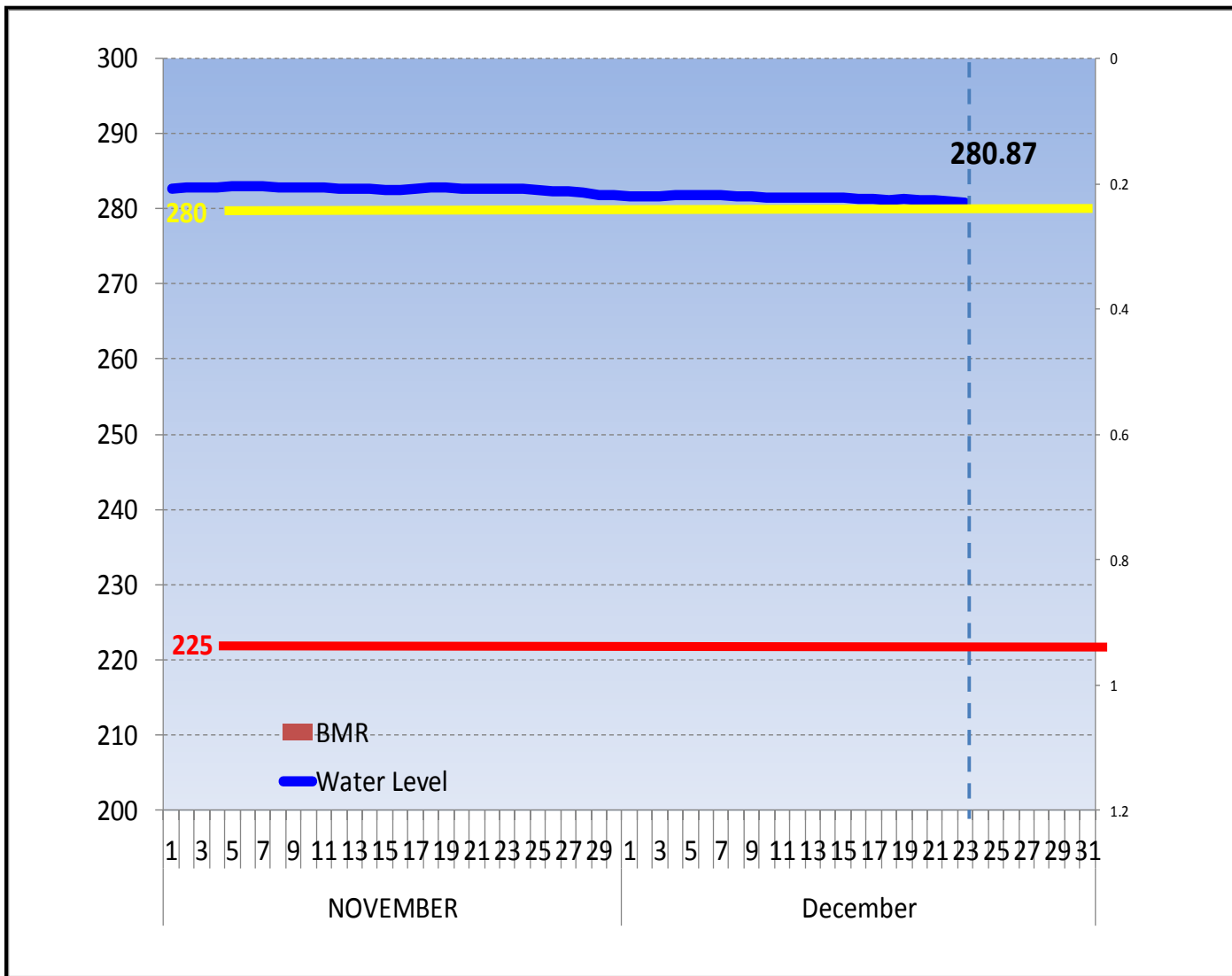
DATE	RWL (m)	DEVIATION (m)
23/12/2016	212.38	-0.54
22/12/2016	212.92	-0.50
21/12/2016	213.42	-0.51
20/12/2016	213.93	0.11

23 December 2016

Hydrometeorology Division



# SAN ROQUE DAM UPDATE



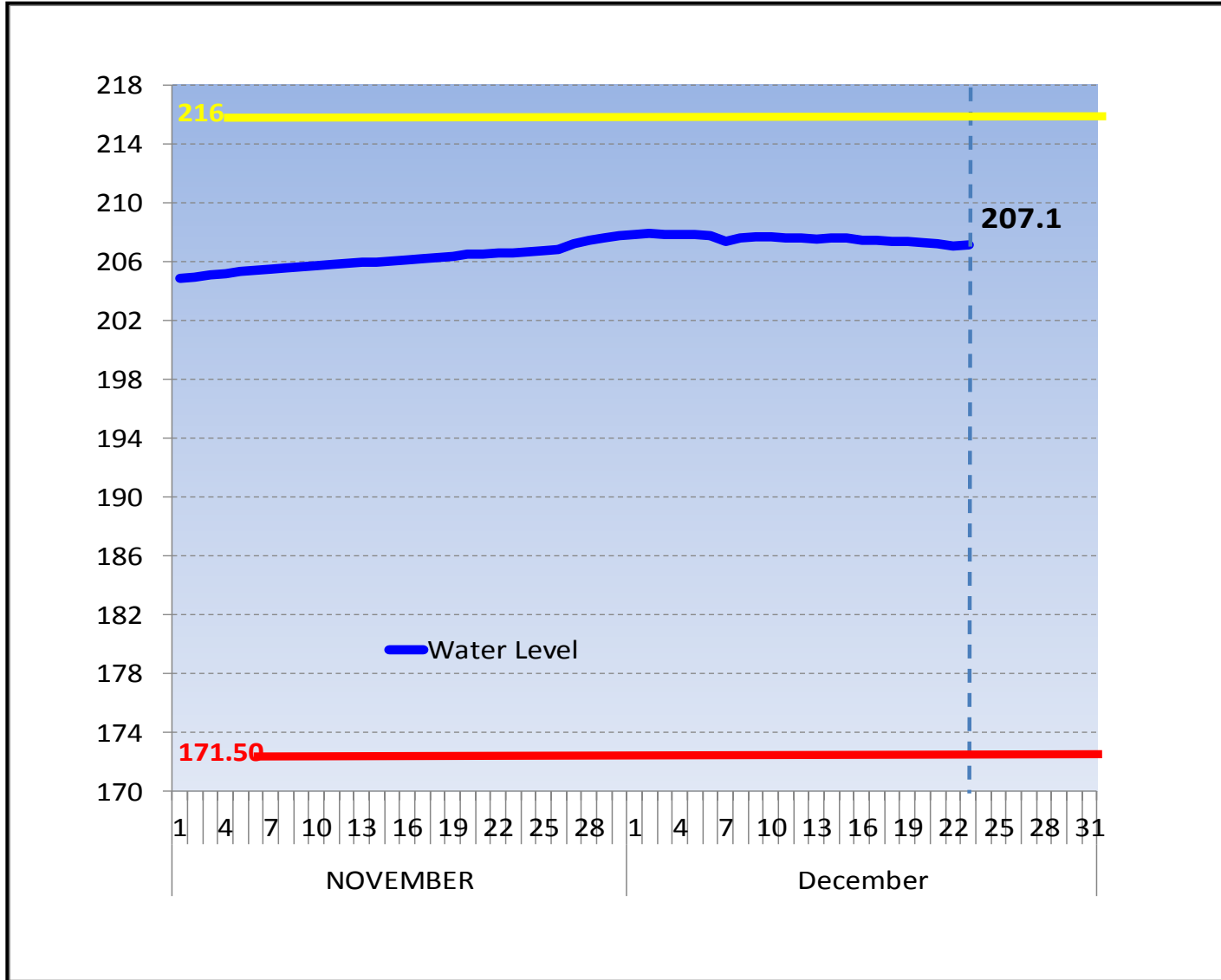
DATE	RWL (m)	DEVIATION (m)
23/12/2016	280.87	-0.07
22/12/2016	280.94	-0.12
21/12/2016	281.06	-0.12
20/12/2016	281.18	-0.07

23 December 2016

Hydrometeorology Division



# PANTABANGAN DAM UPDATE



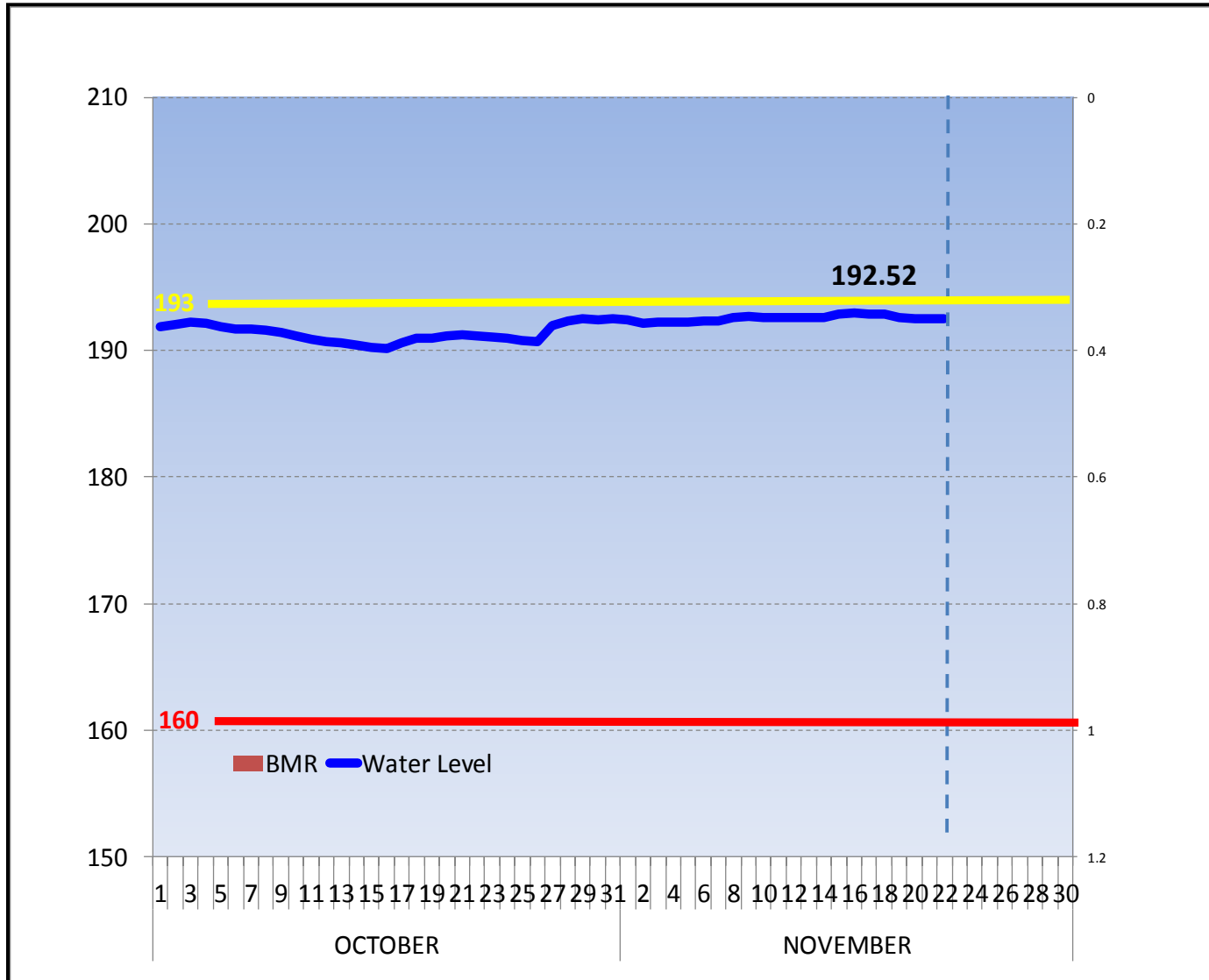
DATE	RWL (m)	DEVIATION (m)
23/12/2016	207.10	0.02
22/12/2016	207.08	-0.11
21/12/2016	207.19	-0.11
20/12/2016	207.30	-0.06

23 December 2016

Hydrometeorology Division



# MAGAT DAM UPDATE



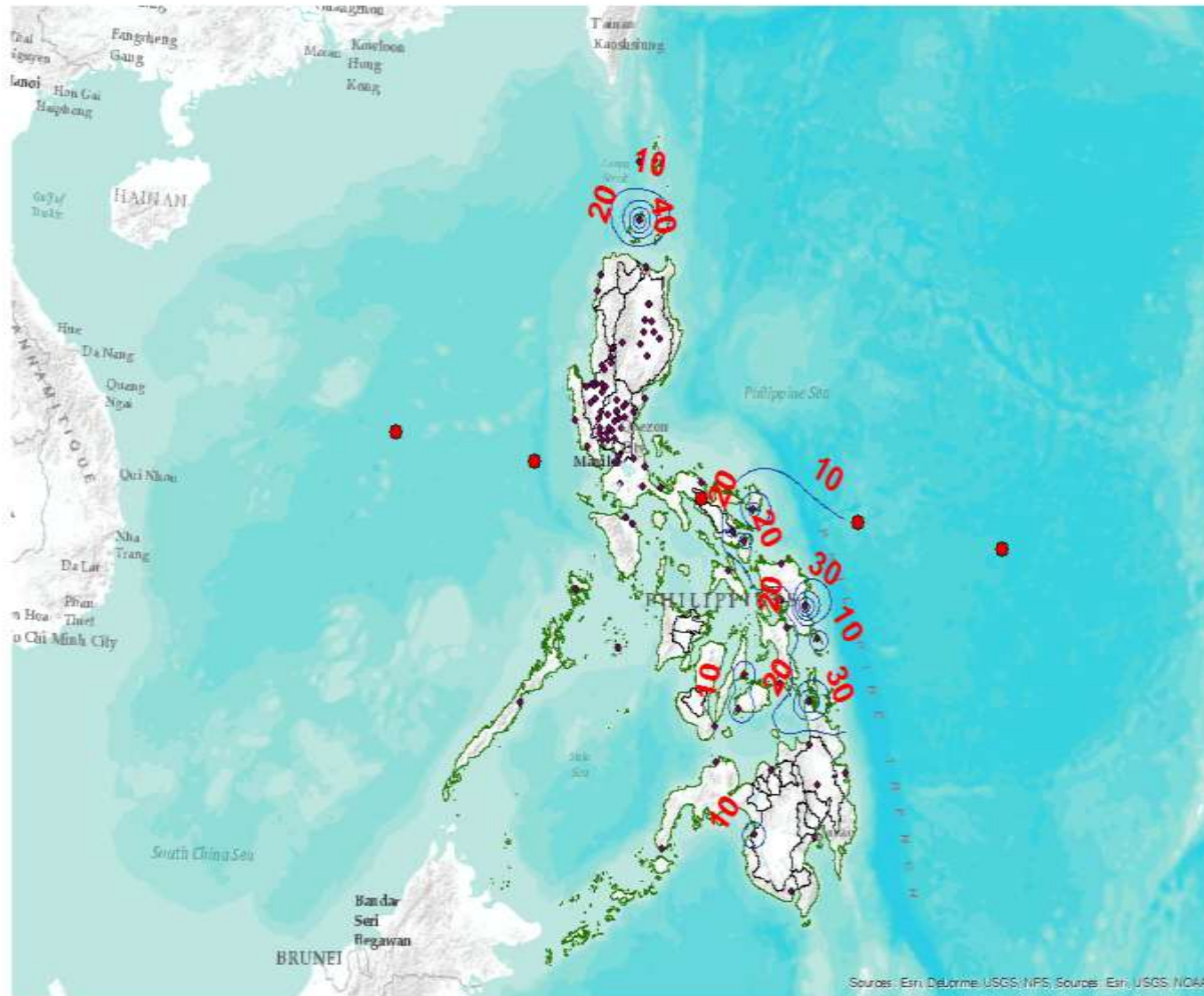
DATE	RWL (m)	DEVIATION (m)
23/12/2016	192.52	-0.03
22/12/2016	192.55	0.07
21/12/2016	192.48	-0.11
20/12/2016	192.59	-0.26

23 December 2016

Hydrometeorology Division



# 24 HR ISOHYETAL ANALYSIS ENDING AT 8 AM 23 DEC 2016





**Flood Advisory Issuances  
as of 7:00 AM, December 23, 2016  
VALID UNTIL 7:00 PM TODAY**

Region 5 – Bicol Region

- Catanduanes
- Camarines Sur
- Camarines Norte
- Albay
- Sorsogon

Region 8 – Eastern Visayas

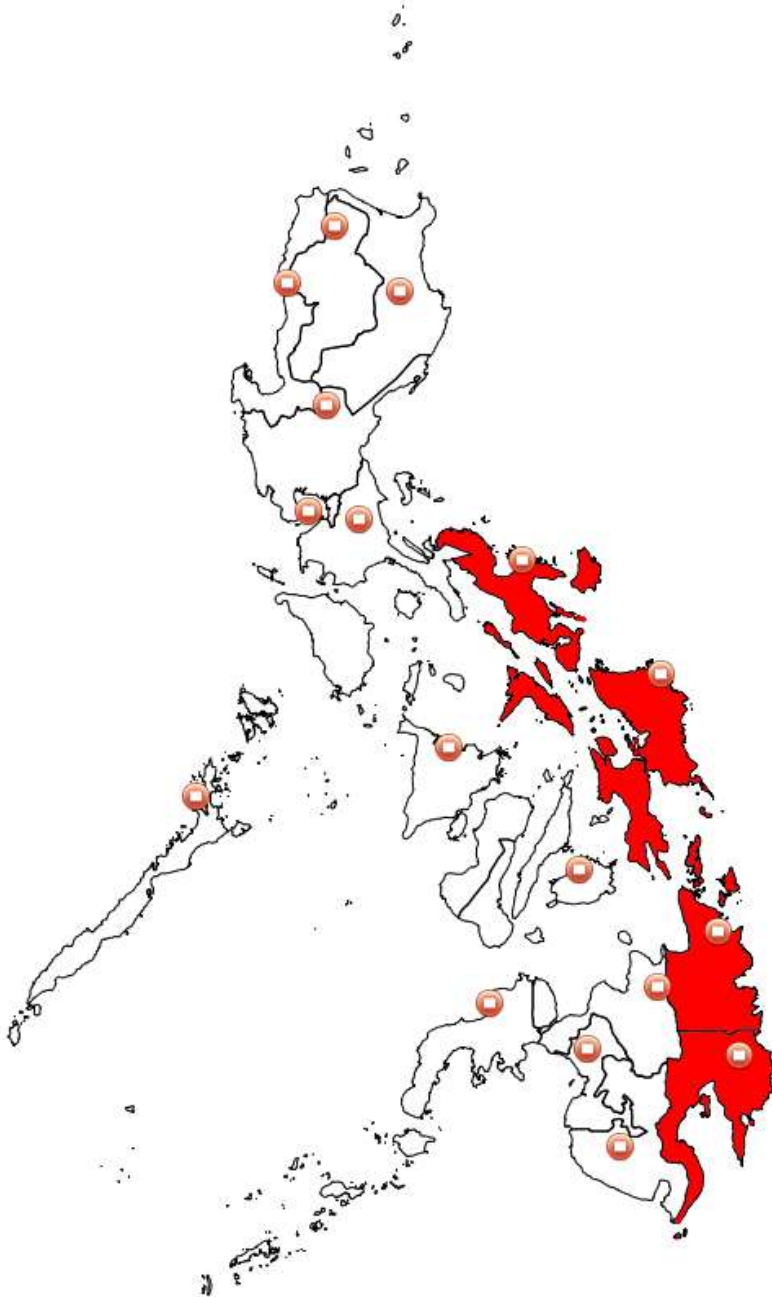
- Leyte
- Eastern samar
- Northern samar
- Southern leyte
- Samar

Region 11 - Davao Region

- Davao Del Norte
- Davao Del Sur
- Davao Oriental
- Compostela Valley

Region 13 - CARAGA

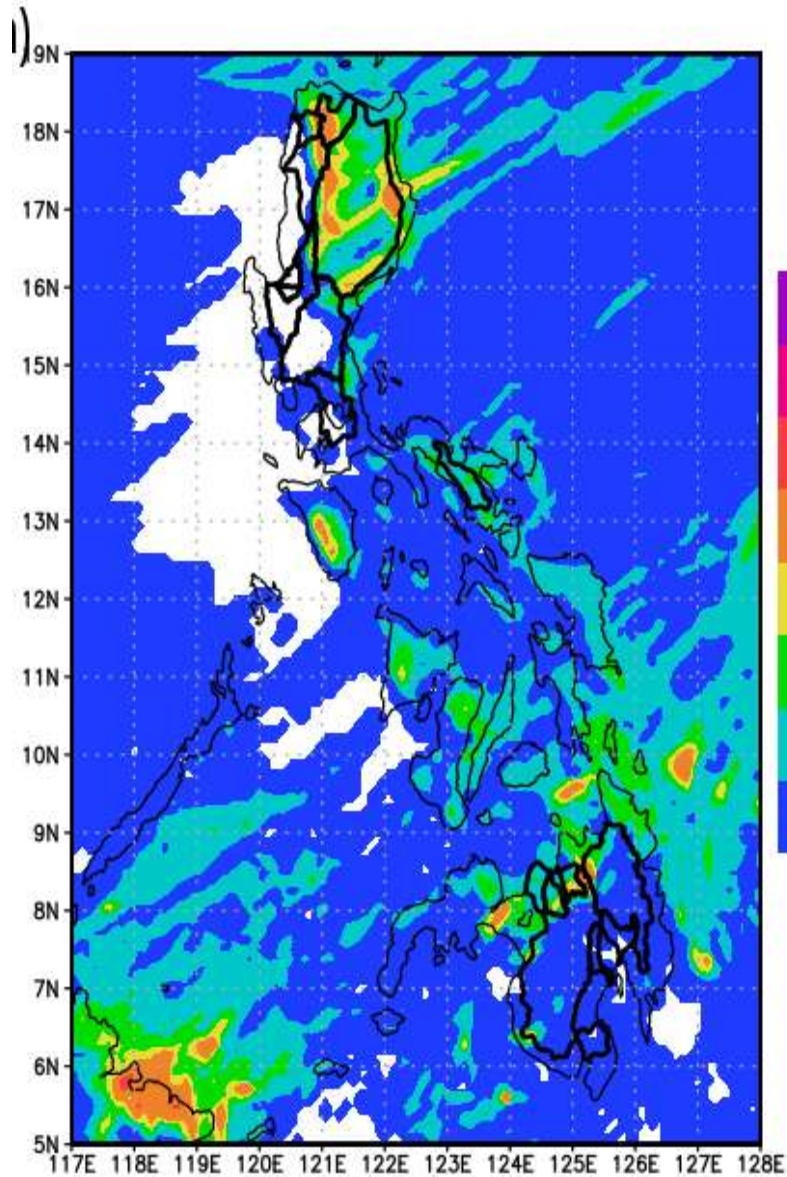
- Agusan Del Norte
- Agusan Del Sur
- Surigao Del Sur
- Surigao Del Norte
- Dinagat Islands



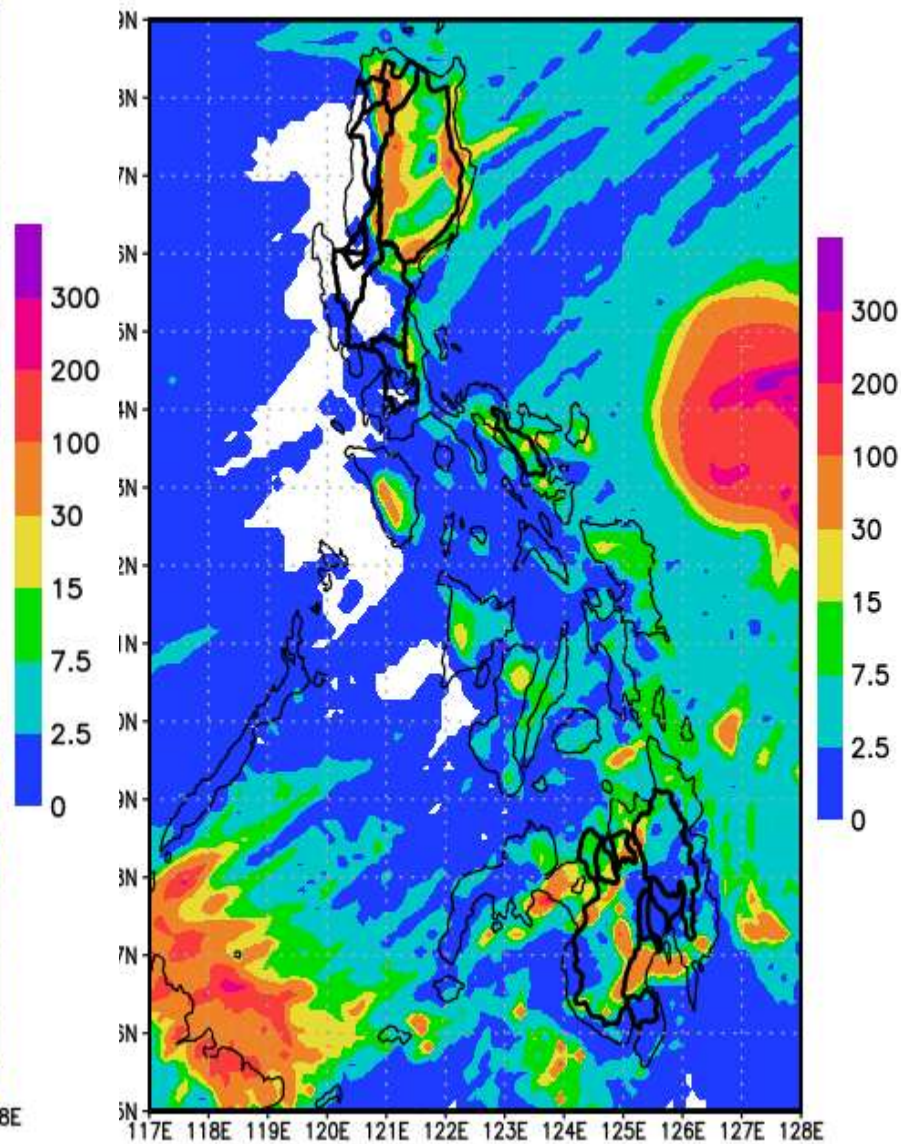


# PROJECTED RAINFALL AS OF 23 DECEMBER 2016

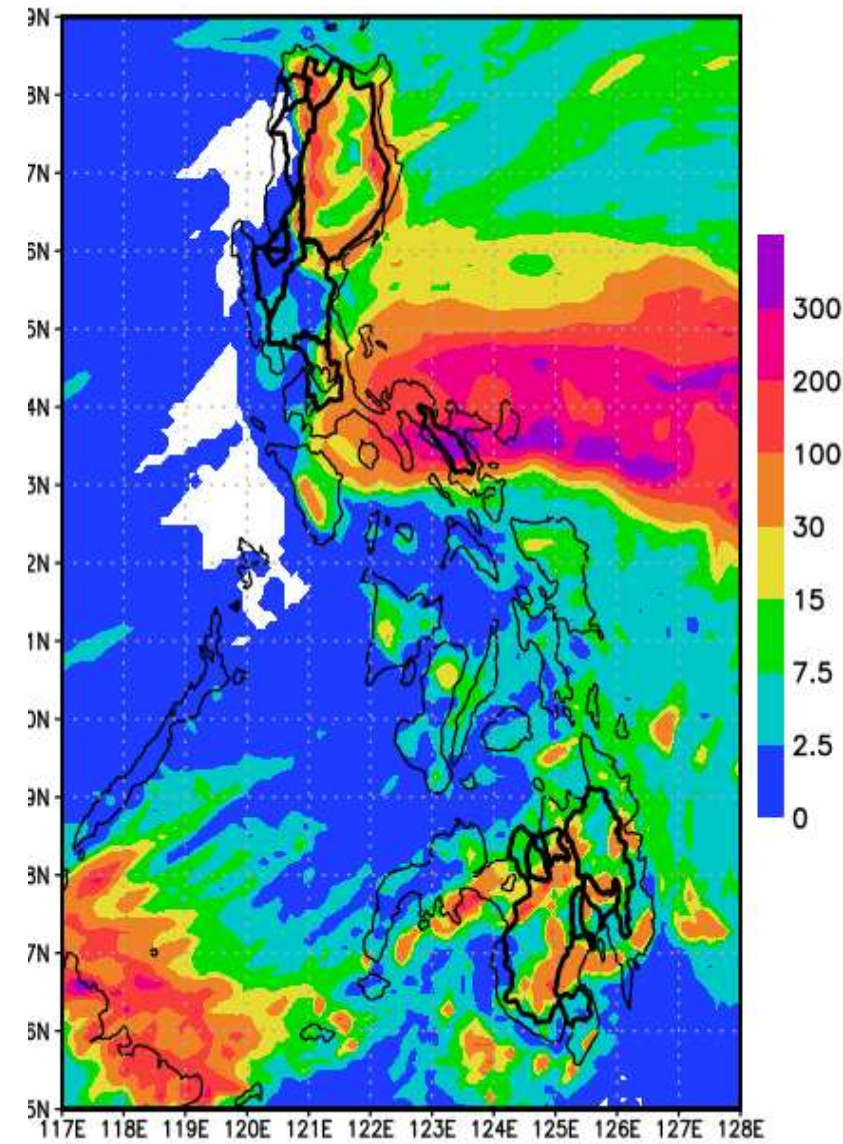
(BASE TIME : 2AM 23 December 2016 )



24-HR (Dec 24, SAT)

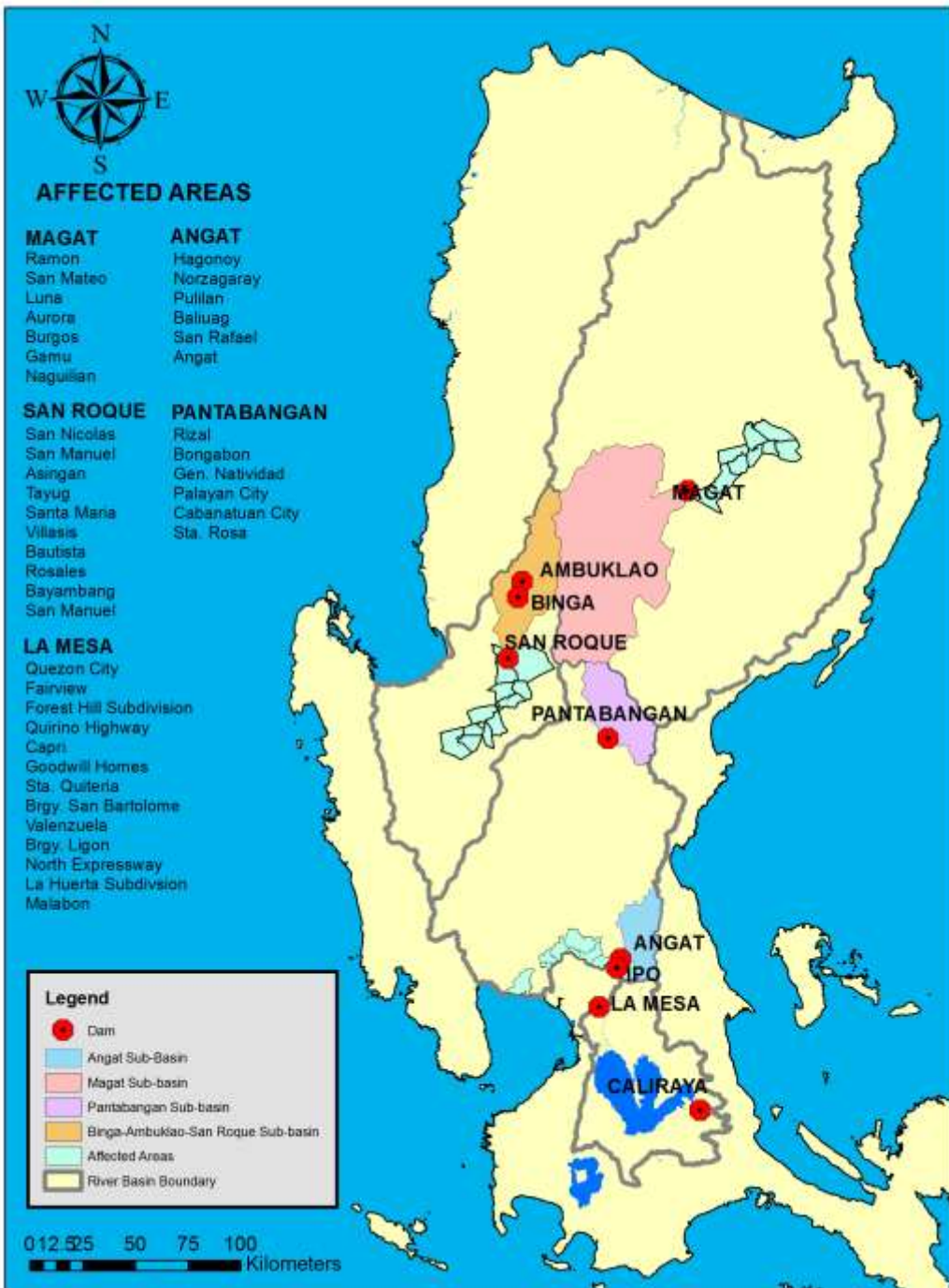


48-HR (Dec 25, SUN)



72-HR (Dec 26, MON)





Elevation	Inflow (cms)	Total outflow (cms)	Avg. Projected 24-Hr Rain (mm)	C	Projected Elev. in 24-hours
<b>212.38 m</b>	175*	231*	5	0.9	<b>212.27 m</b>

\*Source: NPC

# THANK YOU!

