

PAGASA-NOAH Hazard Impact Analysis for Tropical Storm Nock-ten

Based on PAGASA WRF
Initialized December 22, 2016 02:00 AM PST

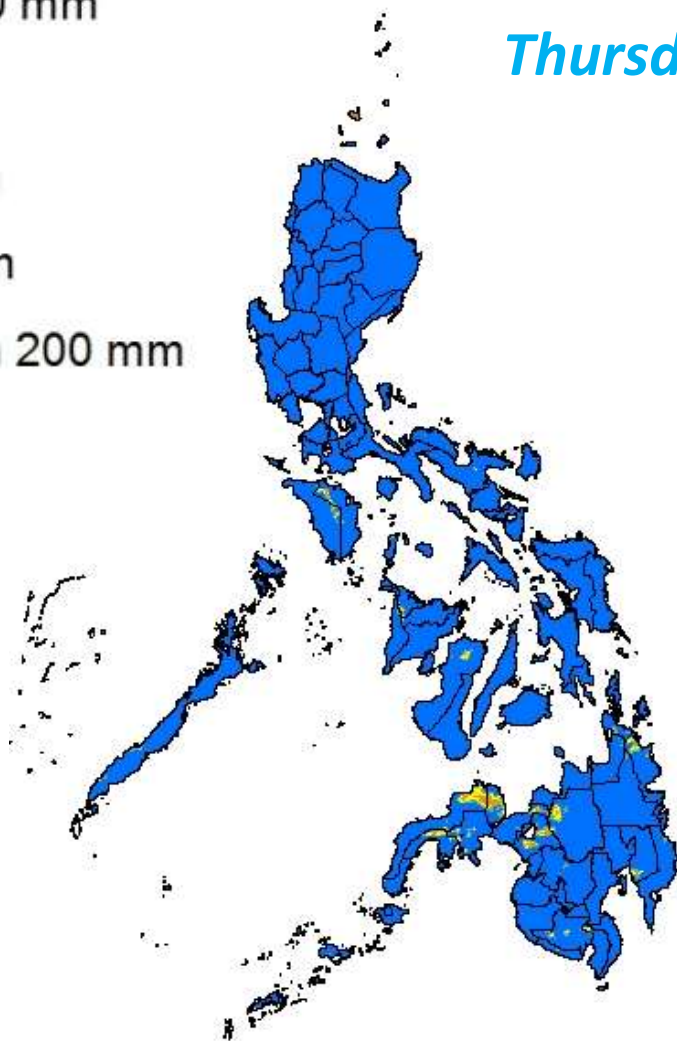


PAGASA WRF

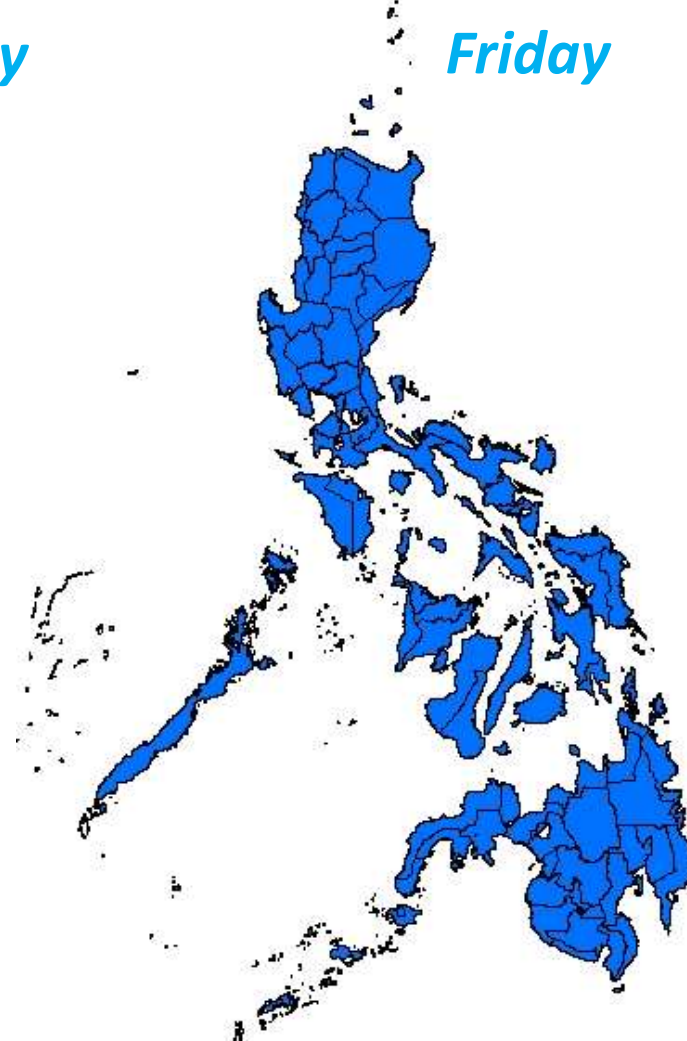
Accumulated Rainfall Forecast



December 22
Thursday



December 23
Friday

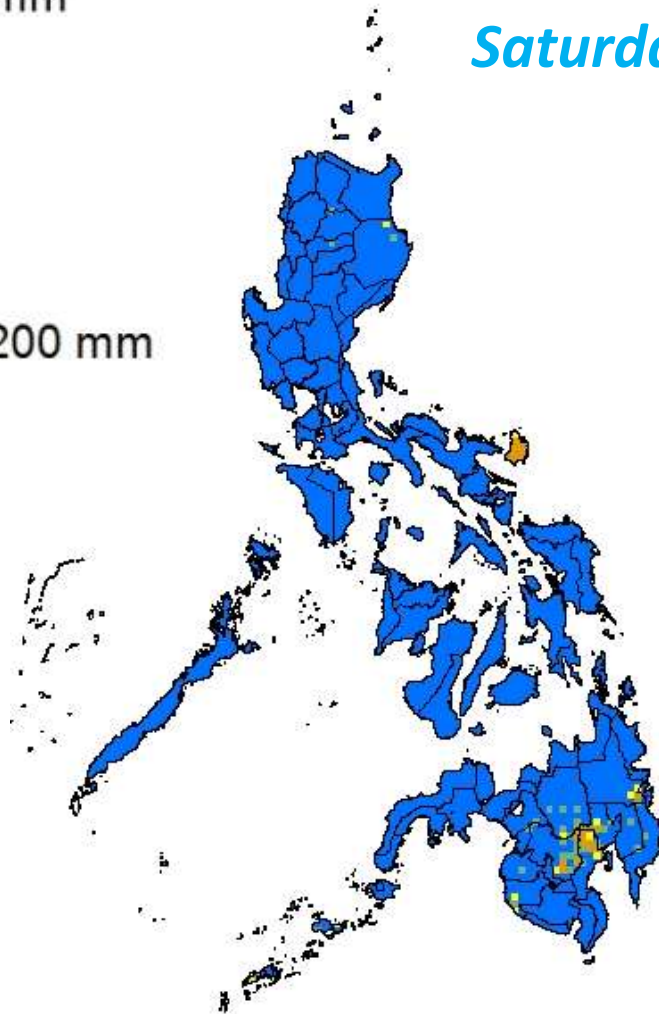


PAGASA WRF

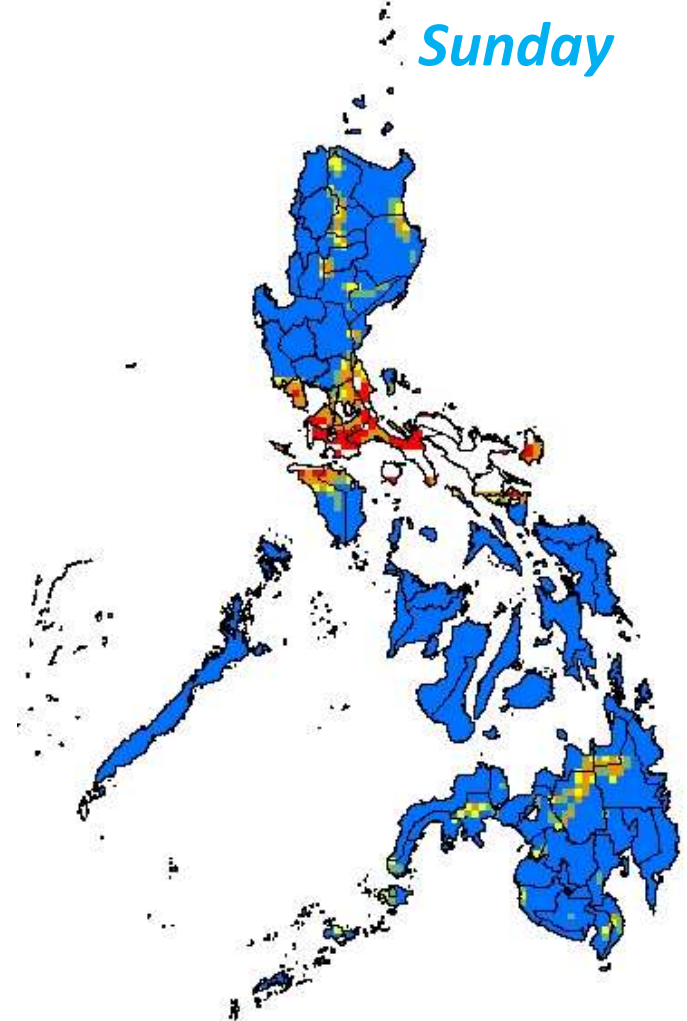
Accumulated Rainfall Forecast



*December 24
Saturday*



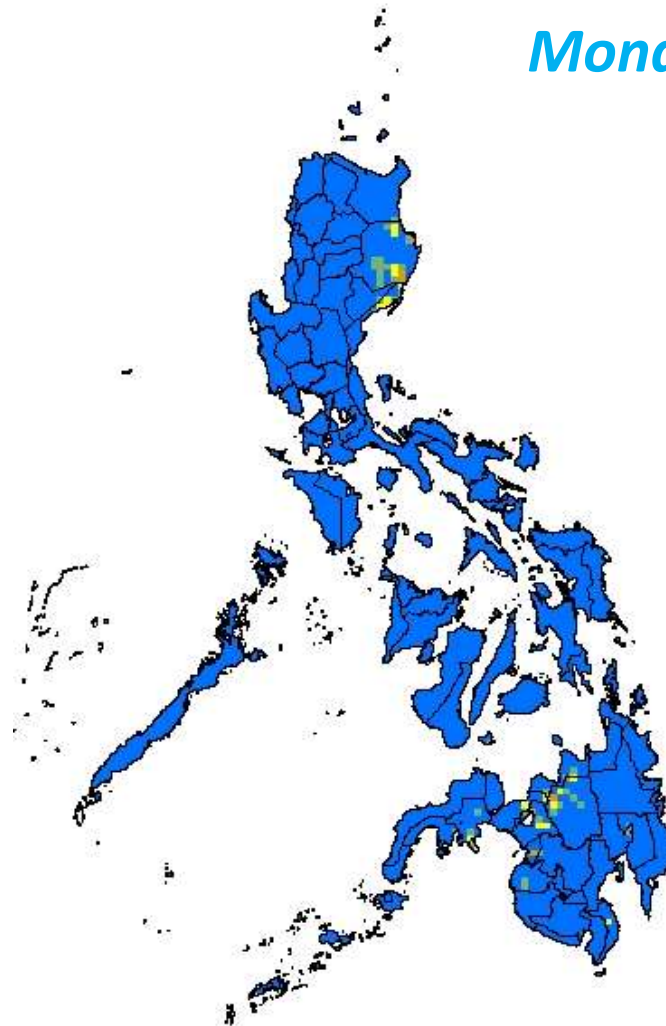
*December 25
Sunday*



PAGASA WRF

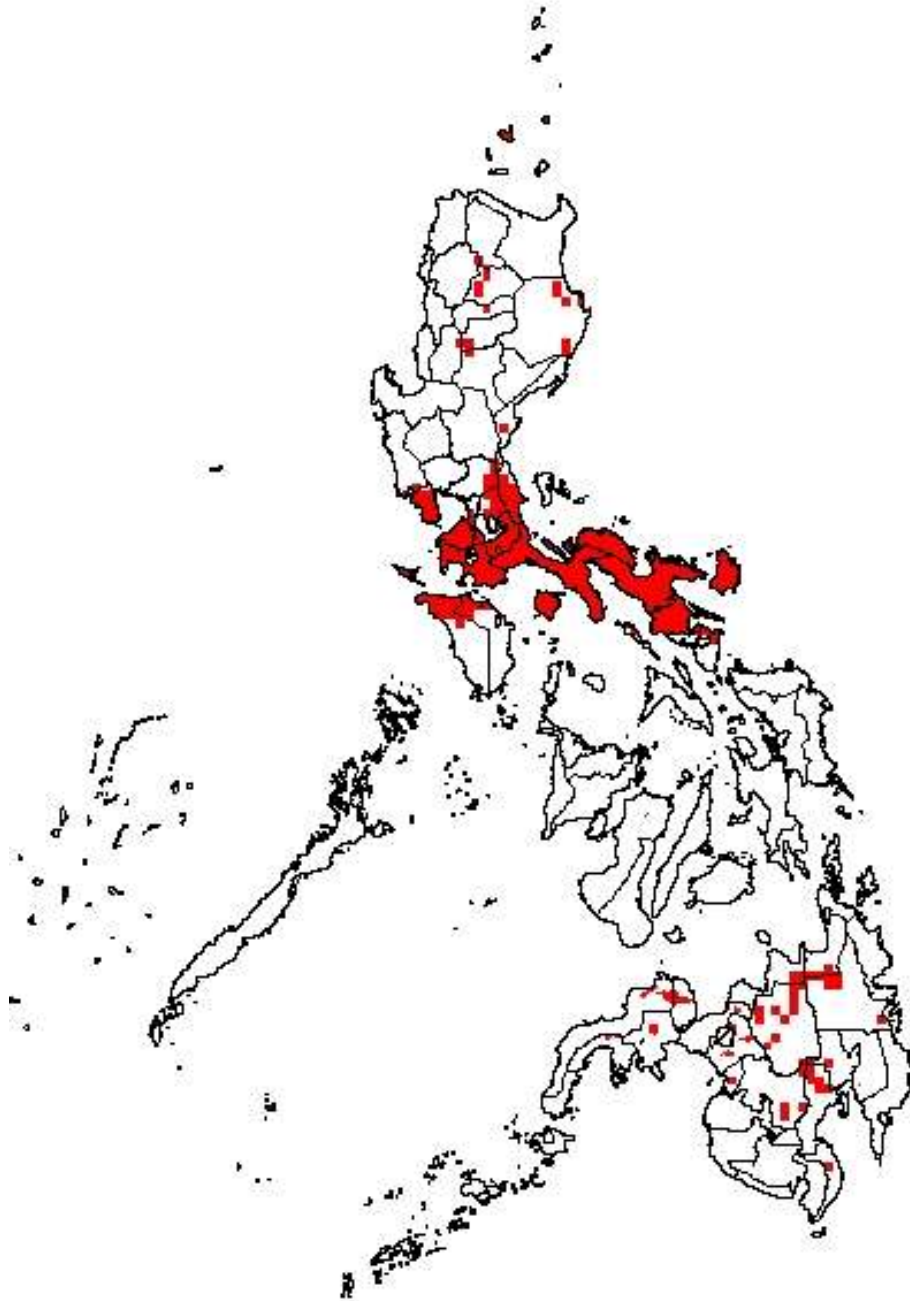
Accumulated Rainfall Forecast

*December 26
Monday*



AREAS WITH ≥ 100 mm OF RAIN THAT MAY TRIGGER LANDSLIDES & FLOODS

*Based on
PAGASA WRF*



378

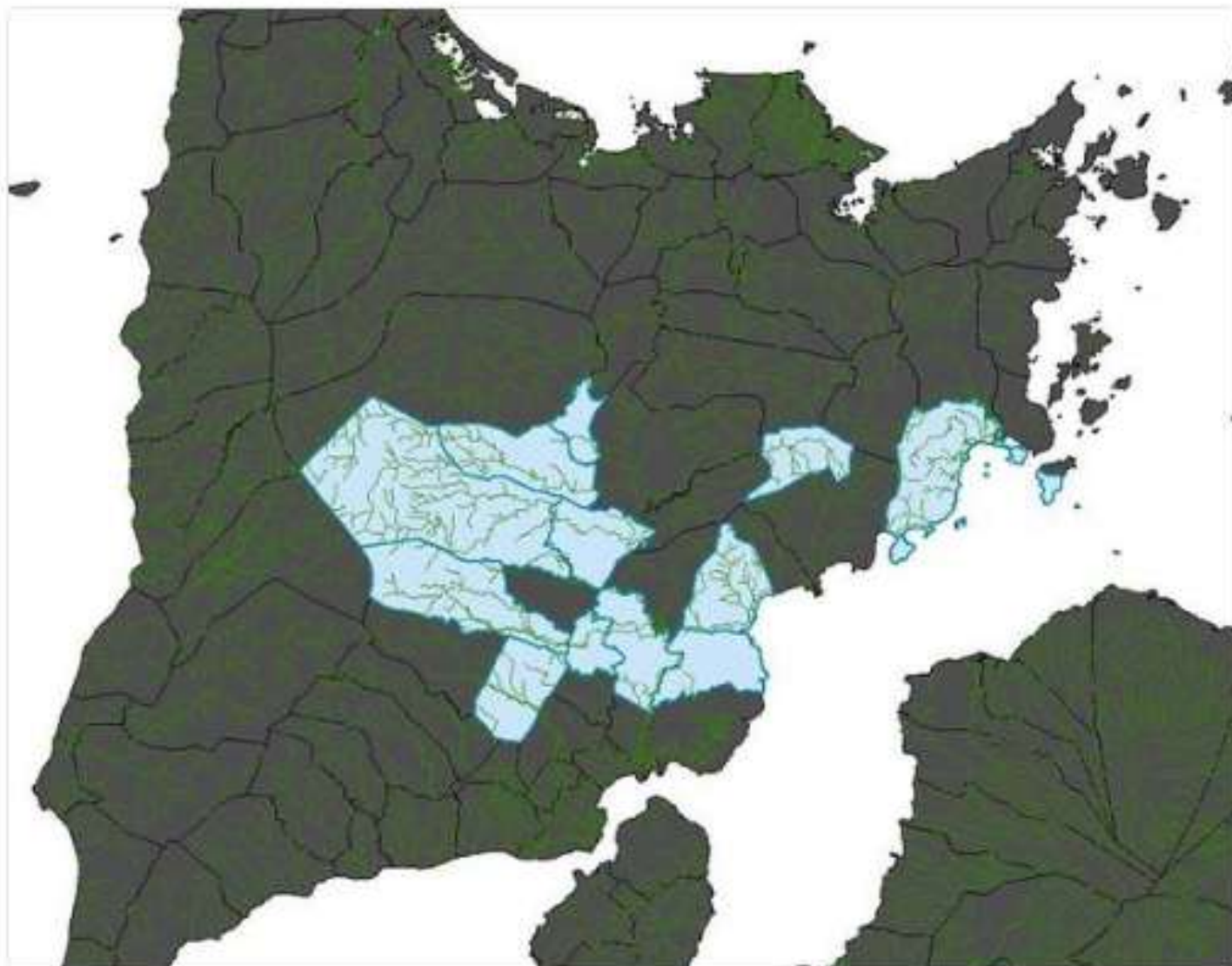
Municipalities in

13 regions



Presidential Comm [@PresidentialCom](#) · 27 Dec 2012

[#QuintaPH](#) · Map of affected municipalities due to **Quinta**-spawned floods, according to PDRRMC. | via [@nababaha](#)

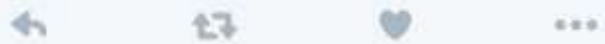
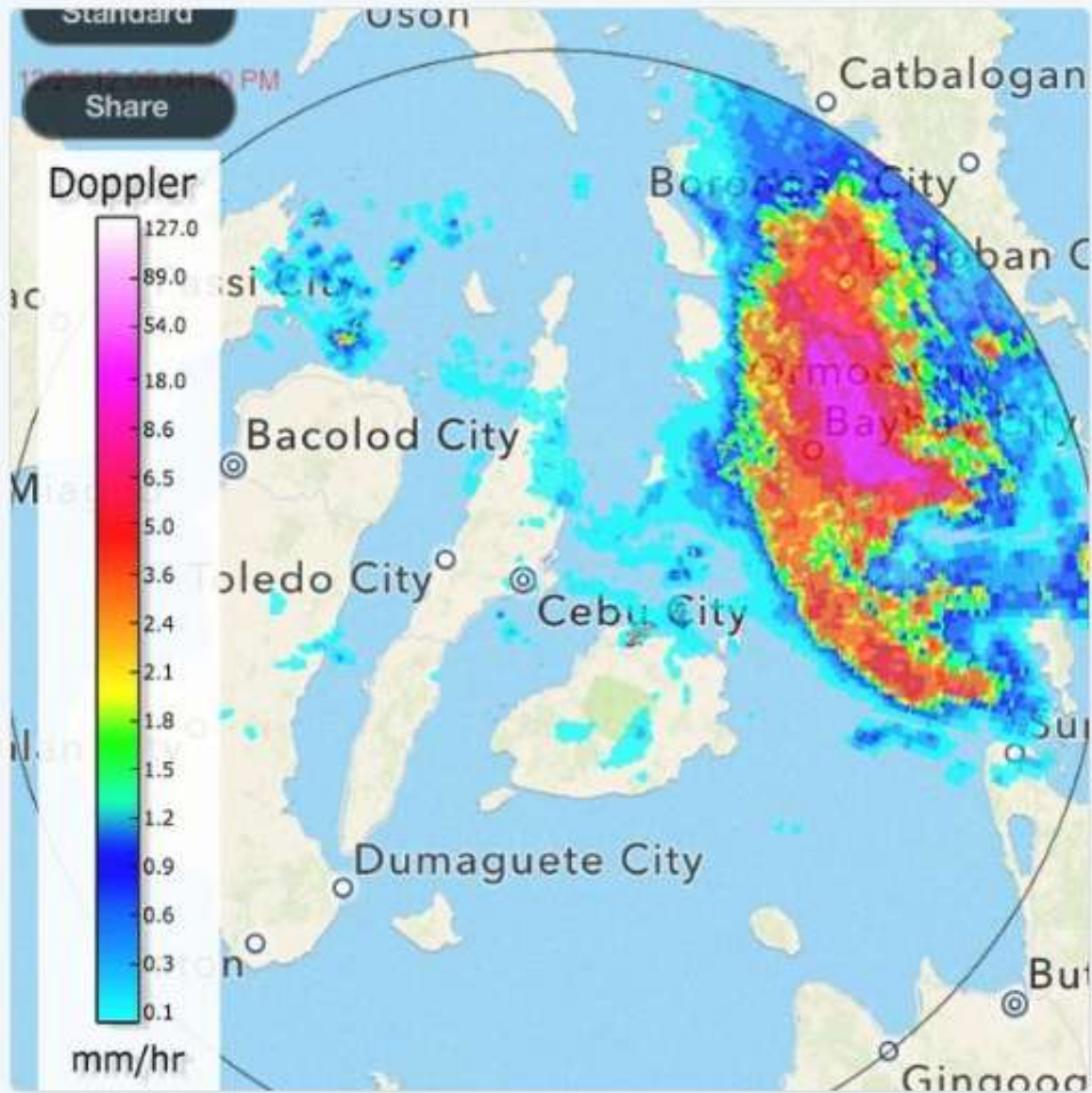


WHO Philippines and 19 others follow



Dr. Gia Sison @giasison · 25 Dec 2012

As of 9:25pm 12/25/12 Storm **Quinta** RT @nababaha: Latest doppler image from Cebu station. #QuintaPH





The Philippine Star @PhilippineStar · 25 Dec 2012

Latest weather satellite image of tropical depression **Quinta**. via @nababaha

