



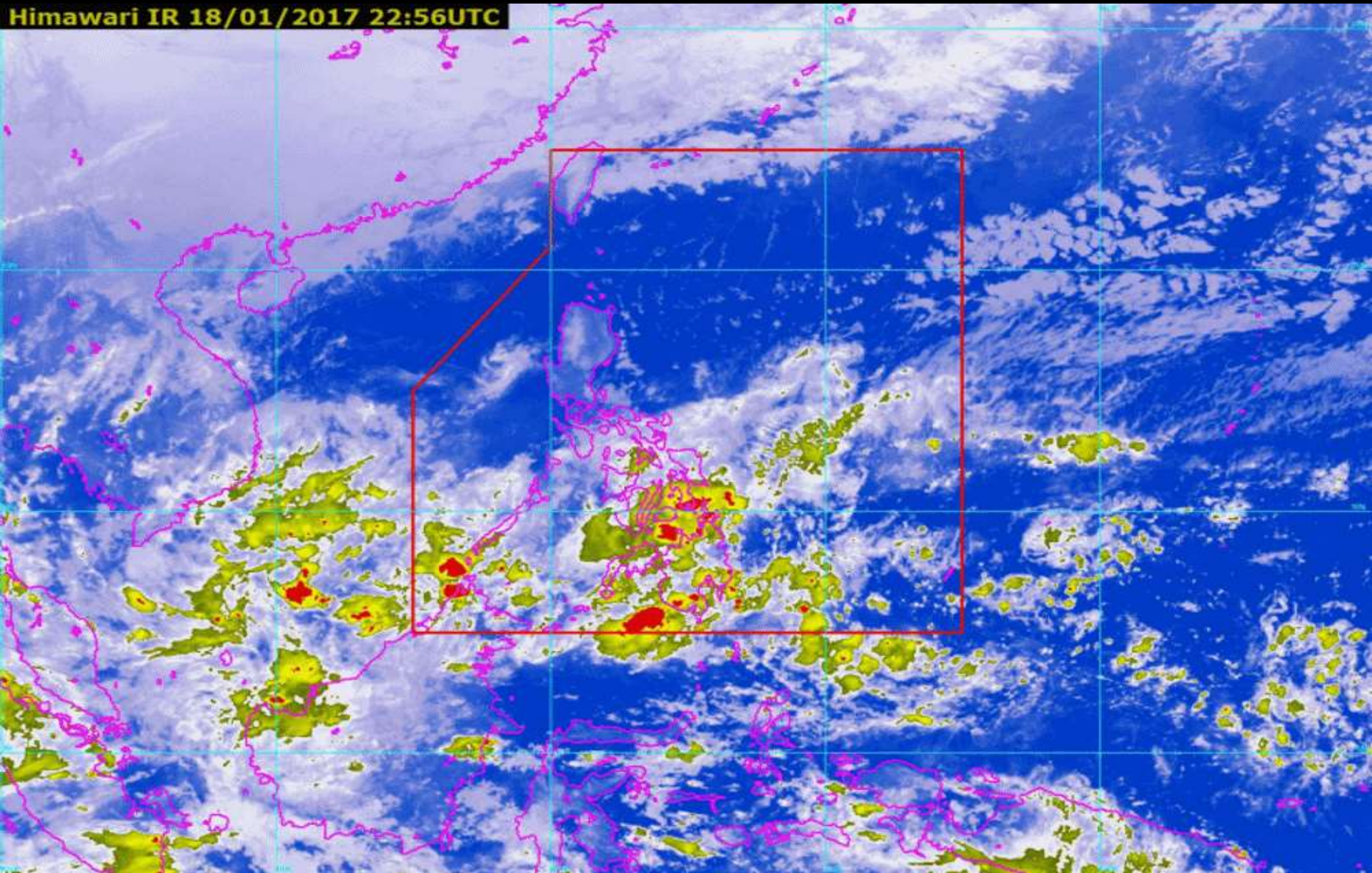
TAIL-END OF COLD FRONT UPDATE

20 January 2017



**TAIL-END OF A COLD FRONT AFFECTING THE EASTERN SECTION OF VISAYAS .
NORTHEAST MONSOON AFFECTING LUZON.**

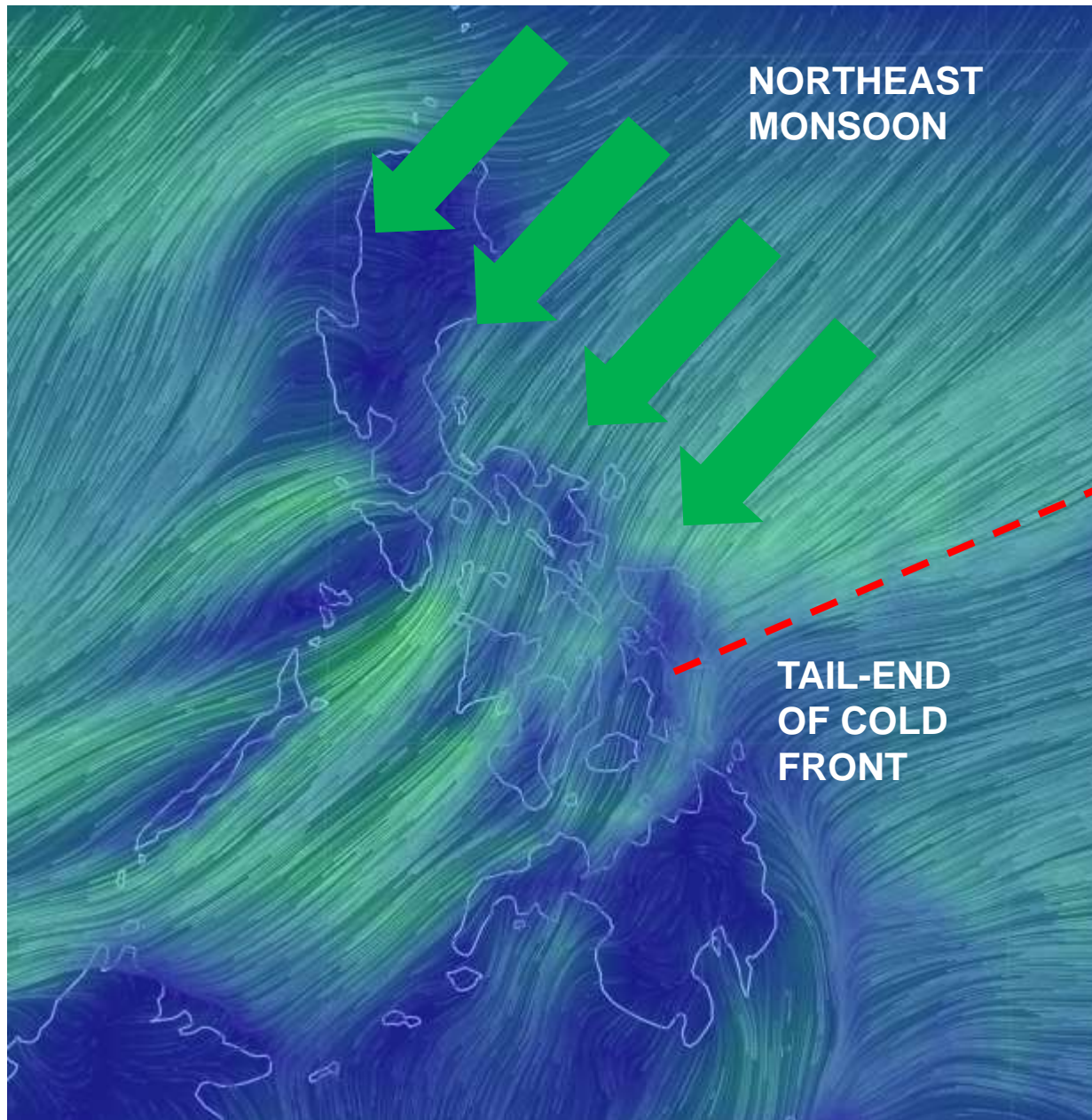
Himawari IR 18/01/2017 22:56UTC



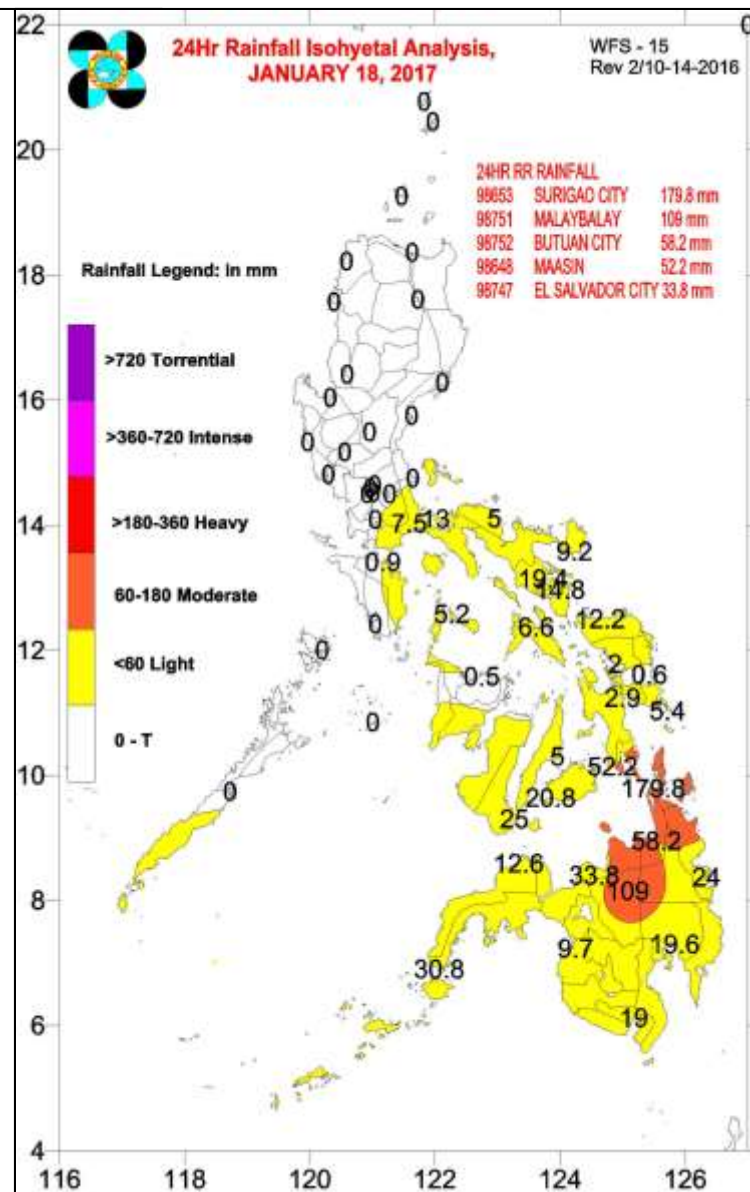
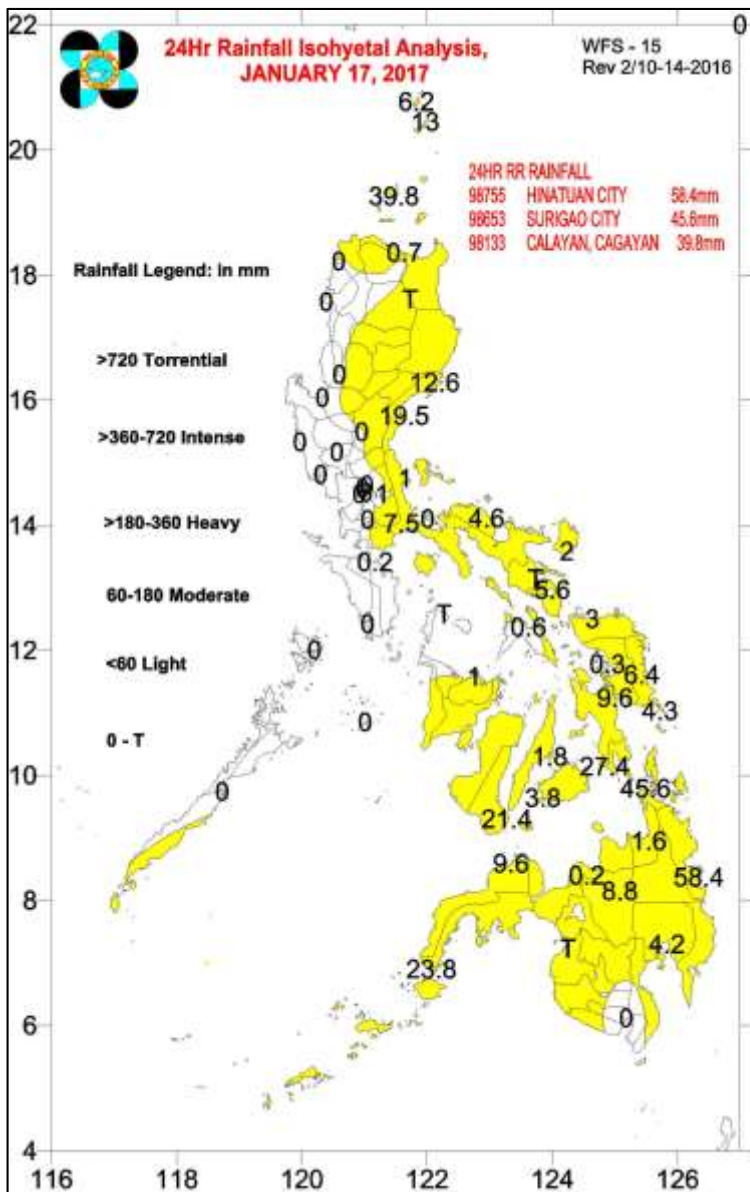
7 AM UPDATE

20 JANUARY 2017

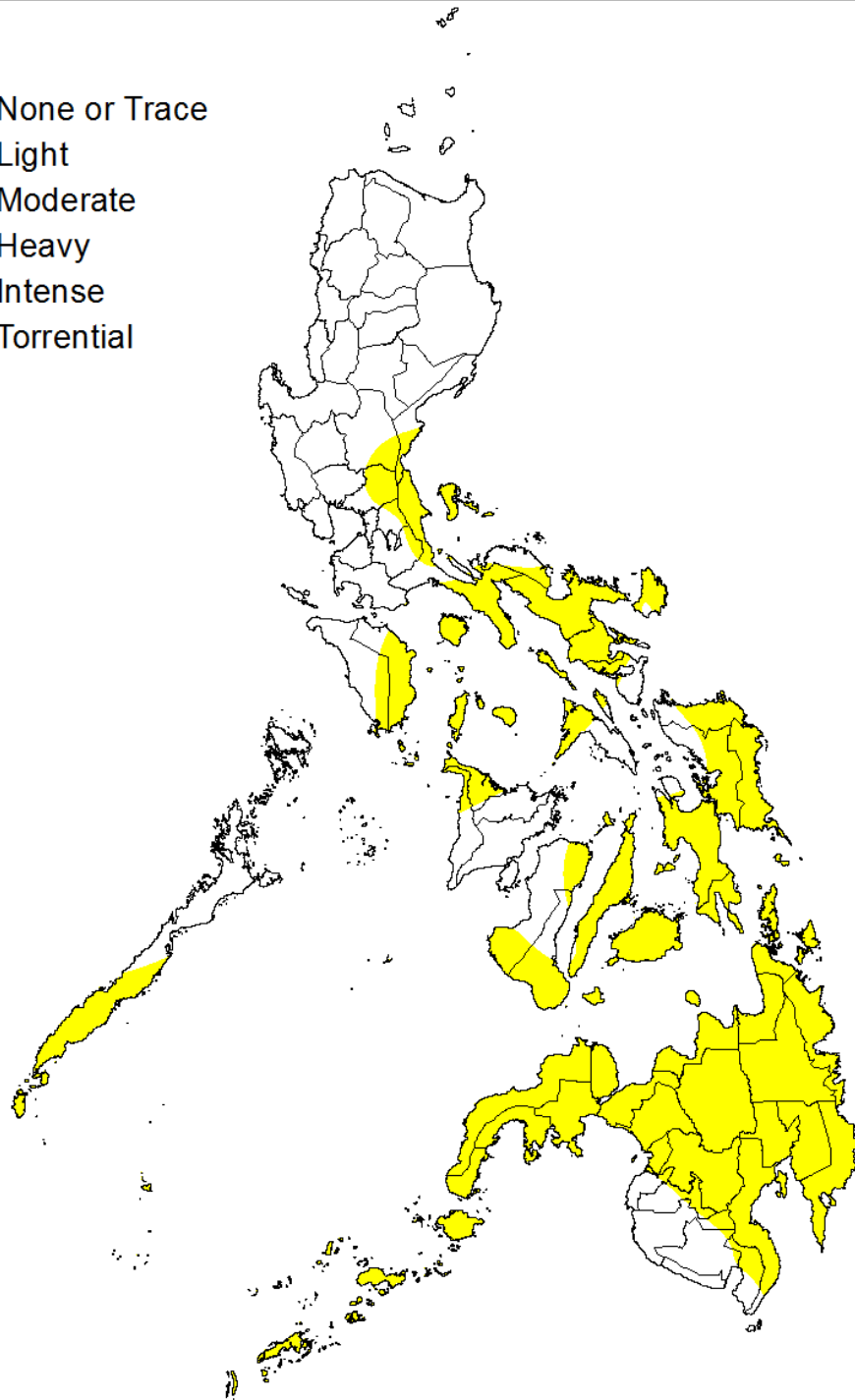
FRIDAY



Wind Analysis as of 5:00 AM, 20 January 2017








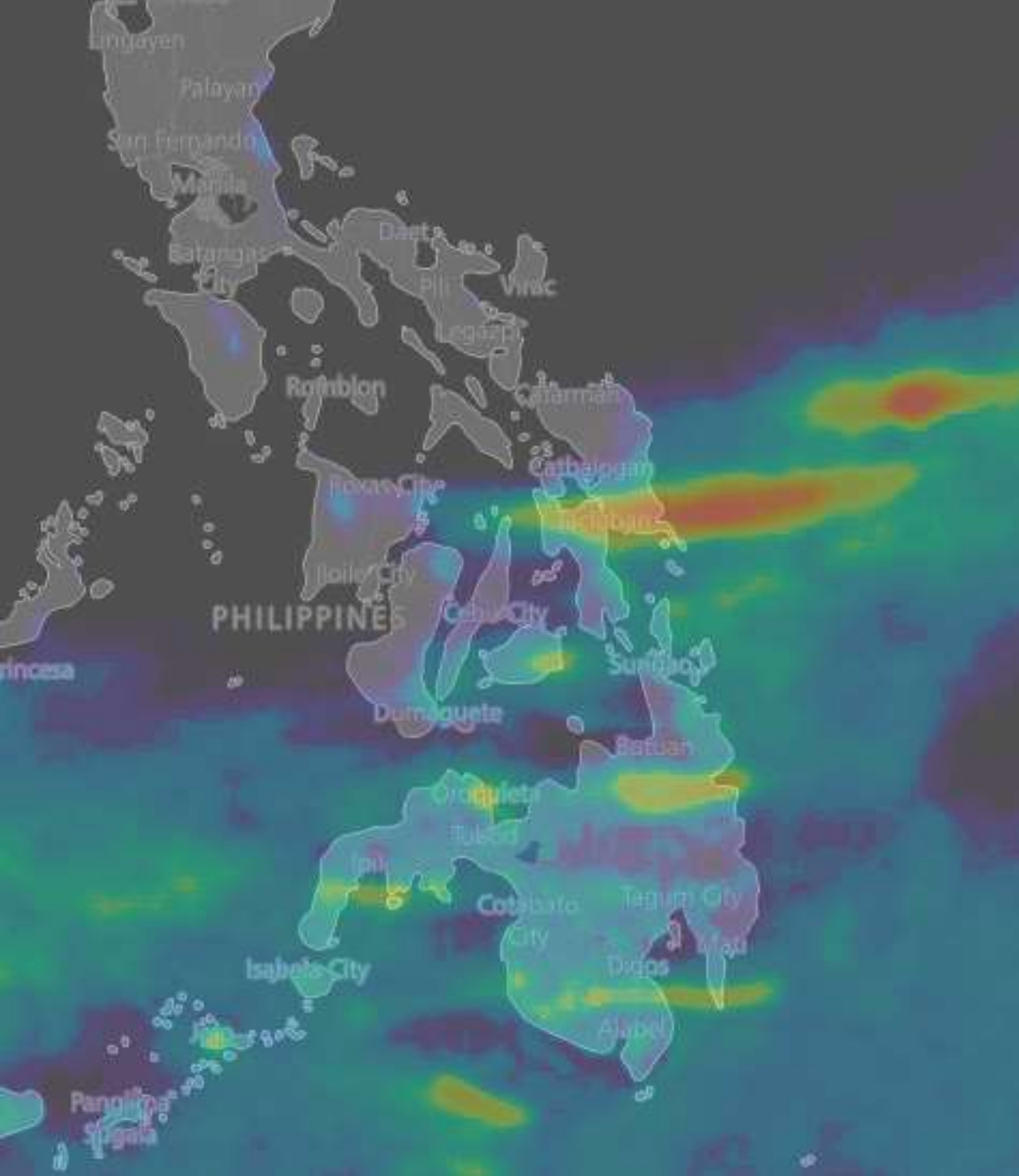
24-Hour Rainfall Observations
17 and 18 January 2017



Rainfall Observation
From 8 AM, 19 January
until 5 AM, 20 January

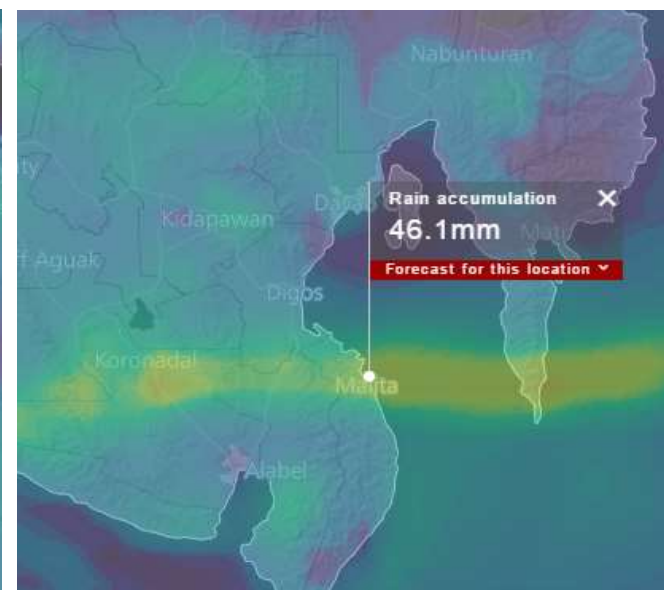
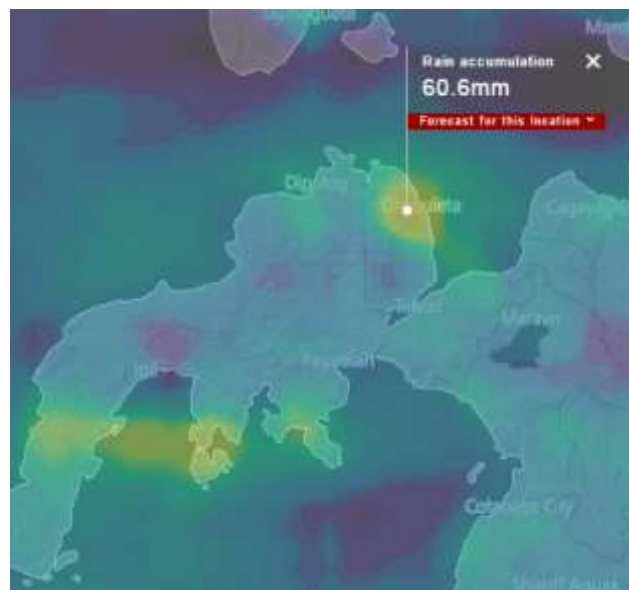
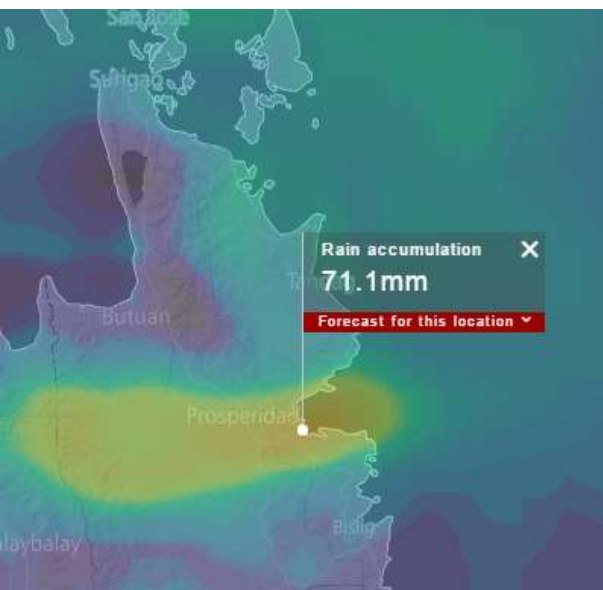
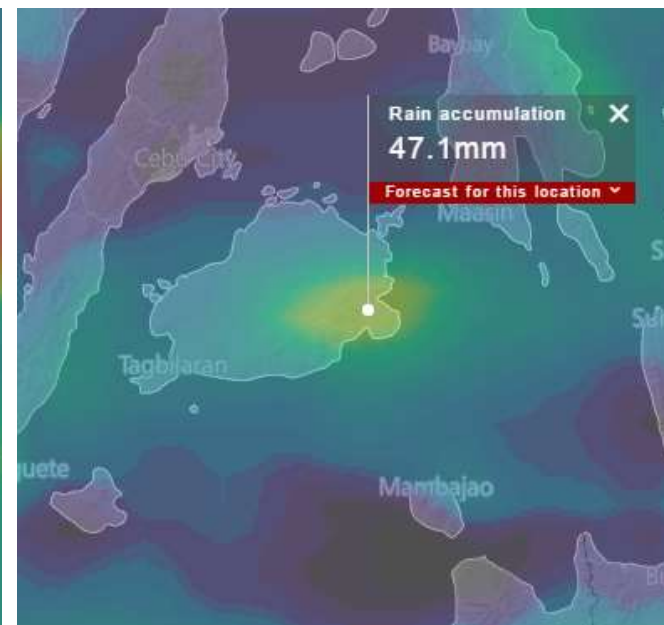
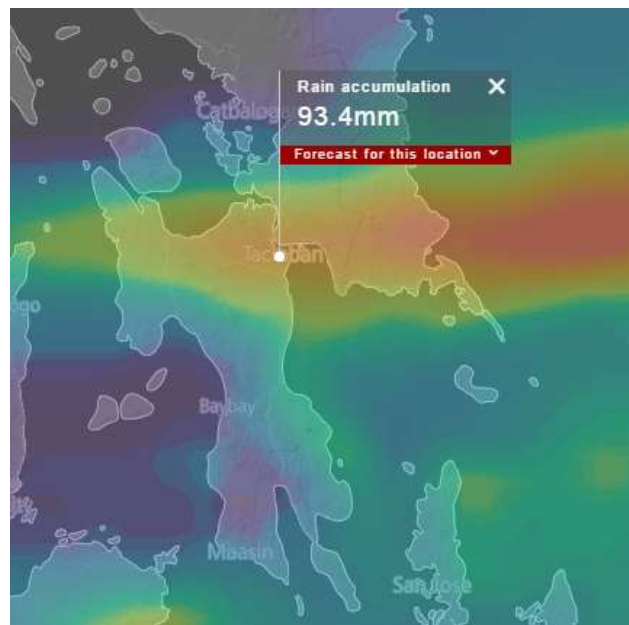
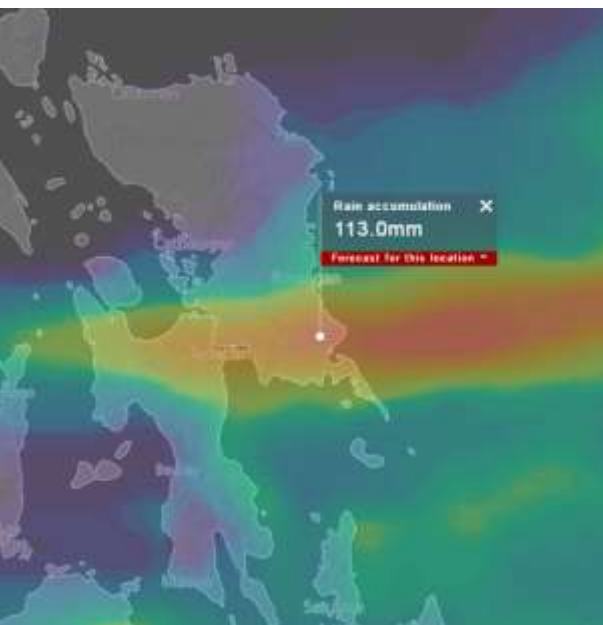
PAGASA Station	8 AM, 17 January to 8 AM, 18 January	8 AM, 17 January to 8 AM, 18 January	8 AM, 18 January to 8 AM, 19 January	8 AM, 19 January to 5 AM 20 January
Catarman	136.0	3.0	12.2	2.0
Catbalogan	27.0	0.3	2.0	0.4
Tacloban	147.0	9.6	2.9	24.0
Borongan	136.0	6.4	0.6	40.2
Guiuan	43.7	4.3	5.4	11.2
Mactan	32.0	1.8	5.0	12.0
Daus	32.8	3.8	20.8	5.6
Maasin	50.2	27.4	52.2	44.0
Surigao City	40.5	45.6	179.8	19.6
Dipolog	209.7	9.6	12.6	15.0
El Salvador City	72.4	0.2	33.8	12.2
Malaybalay	83.4	8.8	109.0	31.0
Butuan City	4.1	1.6	58.2	35.0
Hinatuan	39.0	58.4	24.0	44.0
Davao City	4.4	4.2	19.6	7.2

COLOR	CLASSIFICATION	AMOUNT (MM/DAY)
	LIGHT	60.0 OR LESS
	MODERATE	60.1 TO 180.0
	HEAVY	180.1 TO 360.0
	INTENSE	360.1 TO 720.0
	TORRENTIAL	MORE THAN 720.0



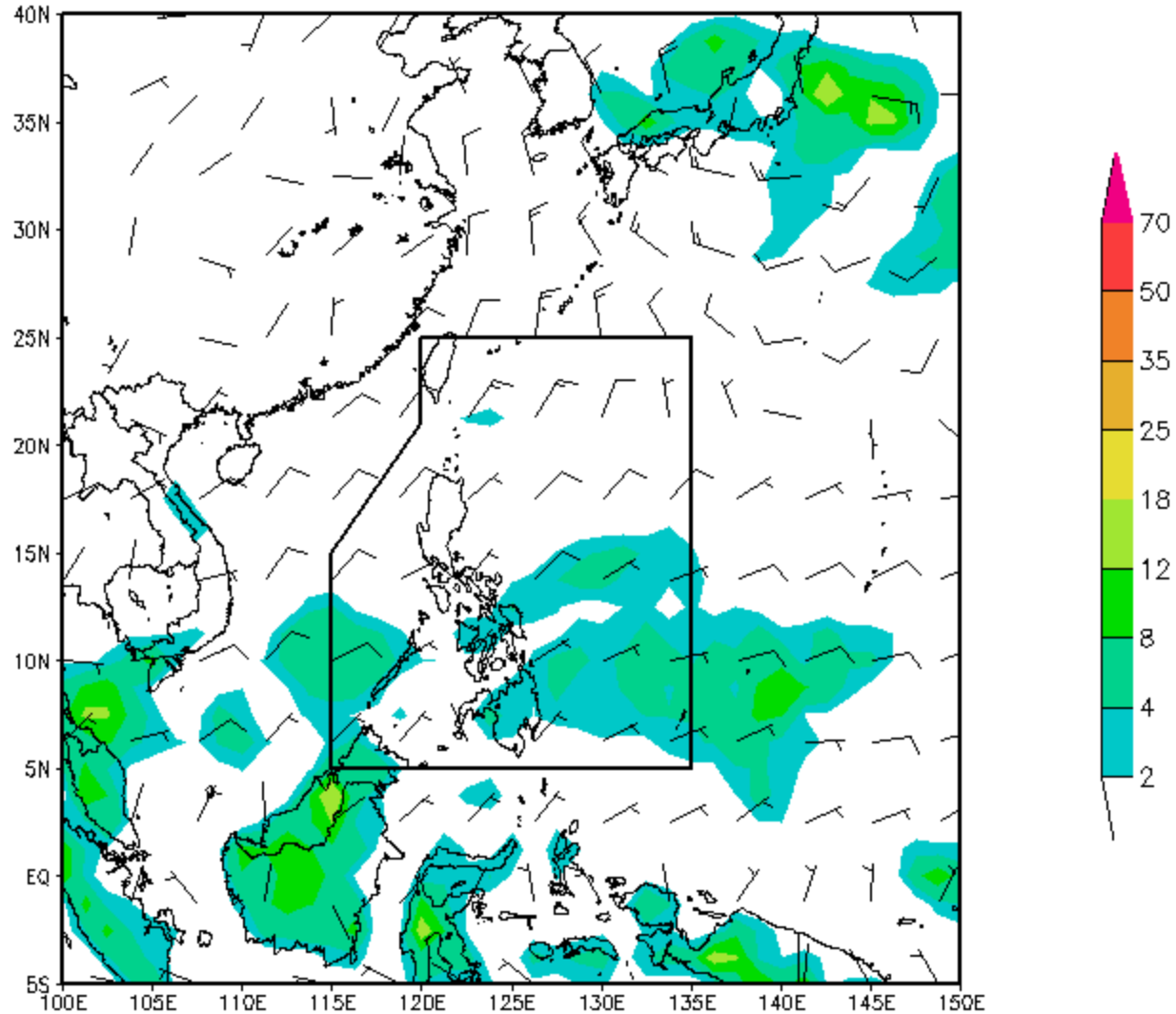
24-Hour Rainfall Forecast

From 5 AM today until 5 AM tomorrow (21 January)



24-Hour Rainfall Forecast
From 5 AM today until 5 AM tomorrow

6 Hourly Rainfall and Wind Analysis for JAN 20, 2017 12UTC Fri
Initial time: 18 UTC 19 JAN 2017 18 hour Forecast

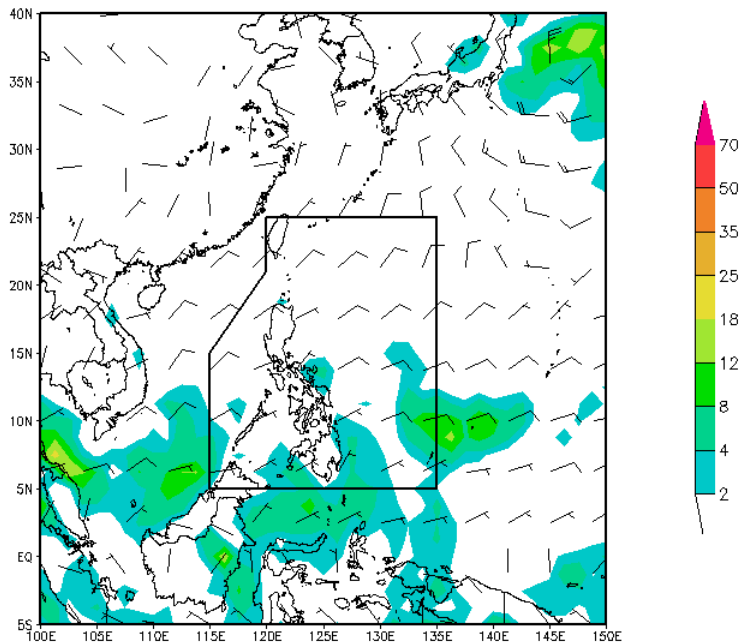


Data from RSMC-Tokyo JMA Global Spectral Model

Processed by PAGASA/WD/TAMSS

6-Hourly Rainfall Forecast for 8 PM 20 January 2017
JMA Global Spectral Model

6 Hourly Rainfall and Wind Analysis for JAN 21, 2017 00UTC Sat
Initial time: 18 UTC 19 JAN 2017 30 hour Forecast



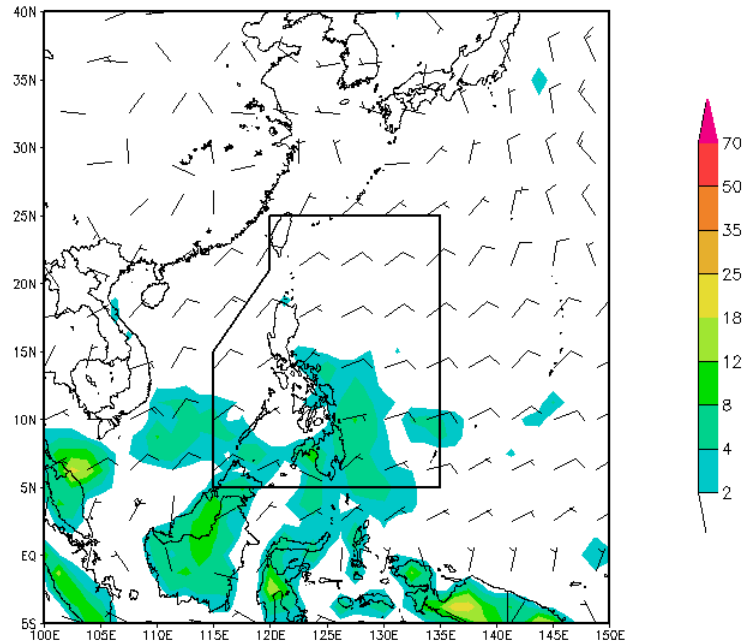
Data from RSMC-Tokyo JMA Global Spectral Model

Processed by PAGASA/WD/TAMSS

**08:00
AM**

**08:00
PM**

6 Hourly Rainfall and Wind Analysis for JAN 21, 2017 12UTC Sat
Initial time: 18 UTC 19 JAN 2017 42 hour Forecast

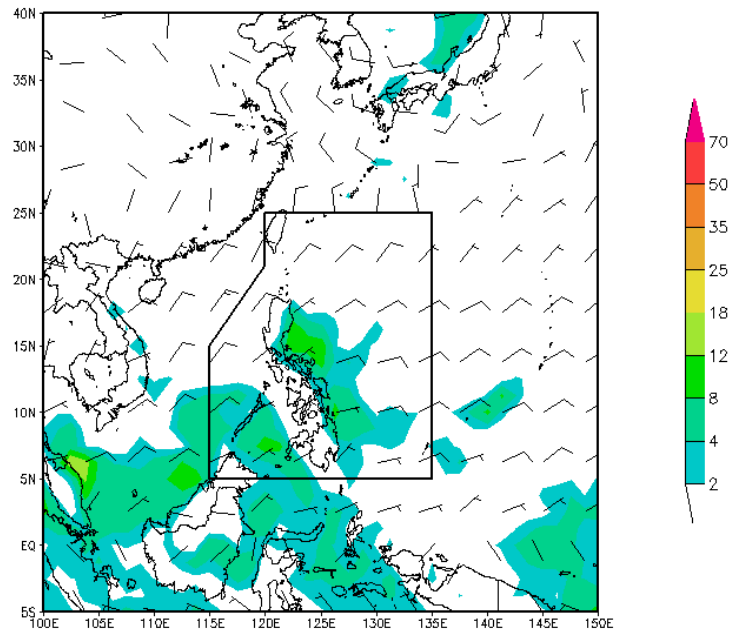


Data from RSMC-Tokyo JMA Global Spectral Model

Processed by PAGASA/WD/TAMSS

6-Hourly Rainfall Forecast for 21 January 2017

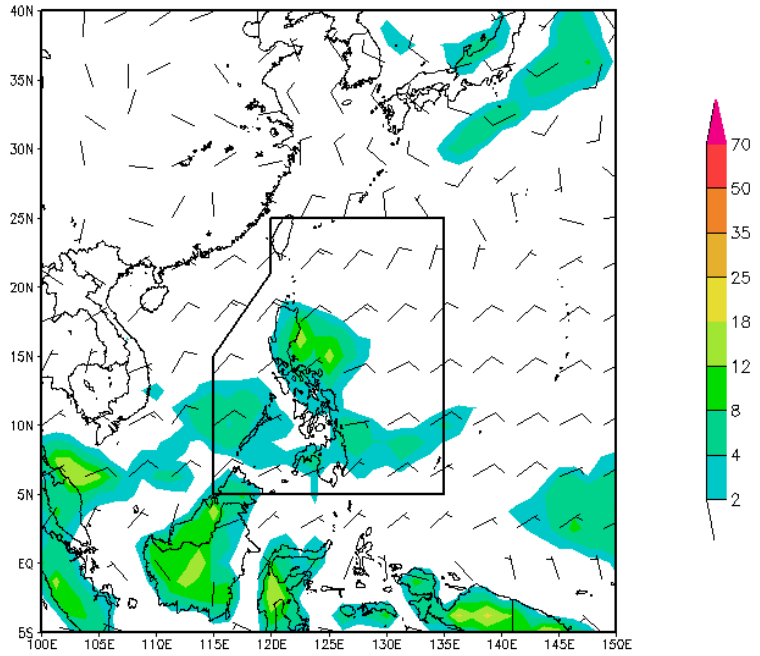
JMA Global Spectral Model



Data from RSMC-Tokyo JMA Global Spectral Model Processed by PAGASA/WD/TAMSS

**08:00
AM**

**08:00
PM**

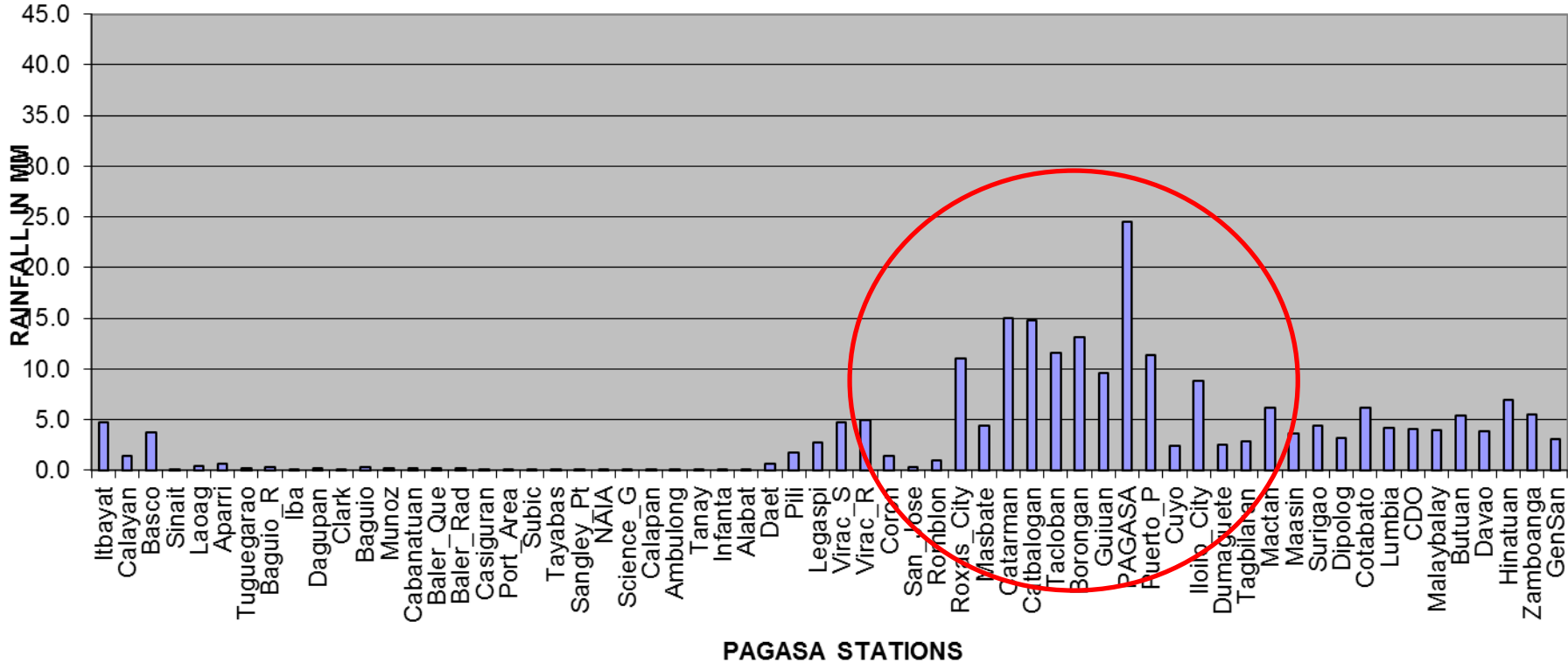


Data from RSMC-Tokyo JMA Global Spectral Model Processed by PAGASA/WD/TAMSS

6-Hourly Rainfall Forecast for 22 January 2017

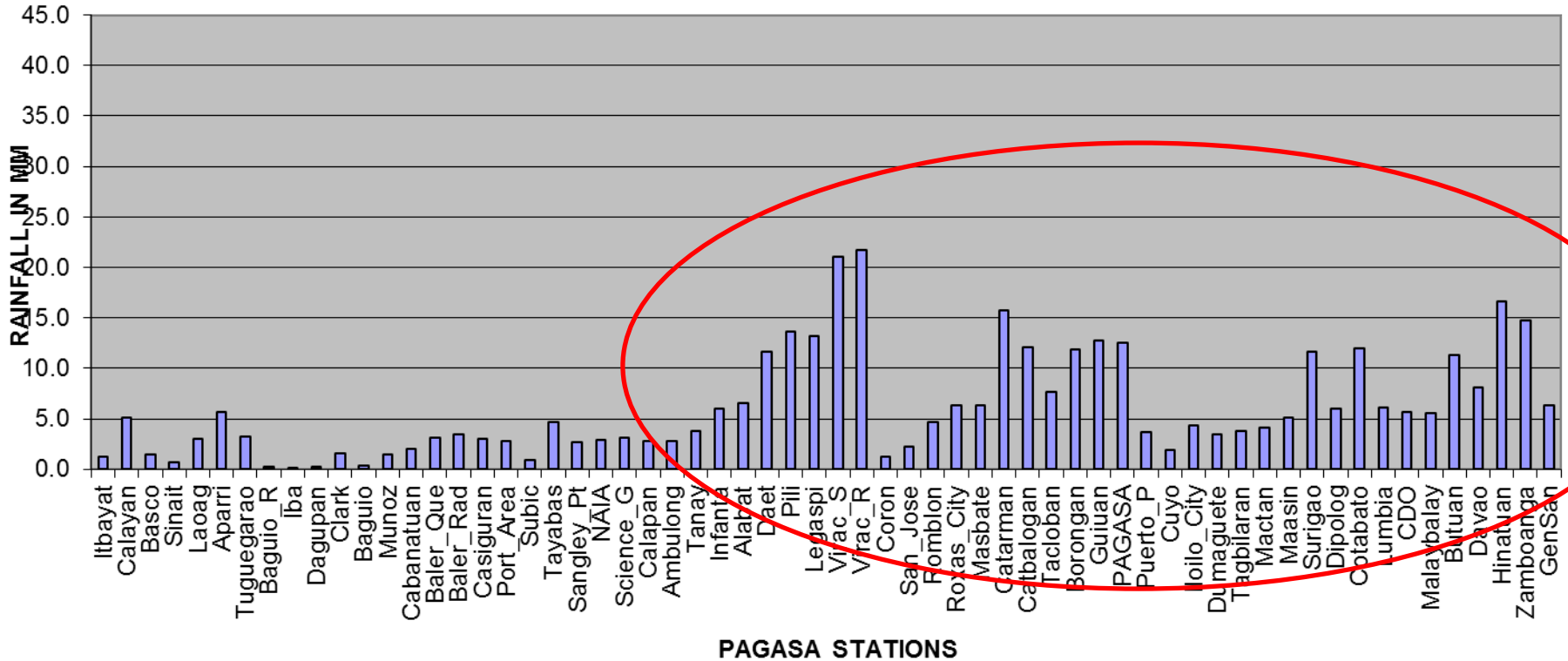
JMA Global Spectral Model

GSM FCST 24 HR RAINFALL from 01/20/17 2:00 AM to 01/21/17 2:00 AM



24-Hour Rainfall Forecast for 20 January 2017
JMA Global Spectral Model

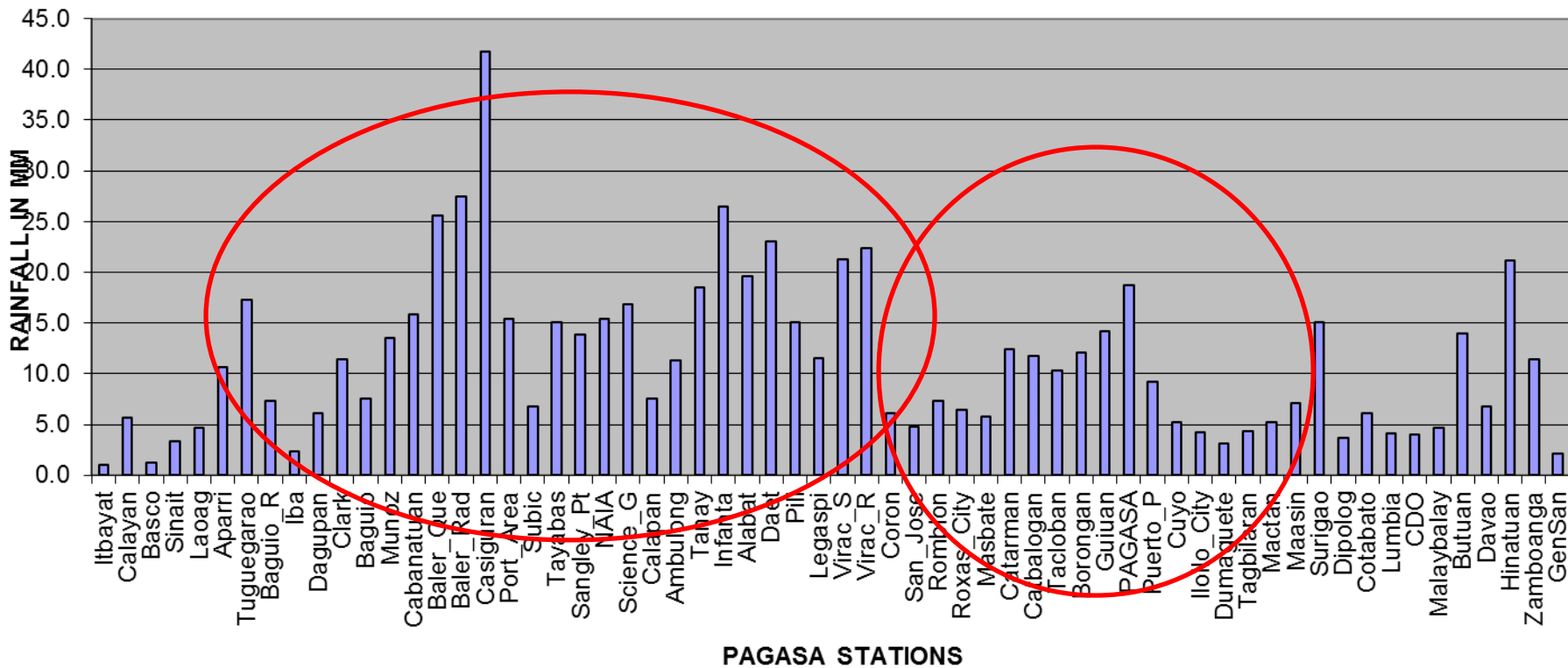
GSM FCST 24 HR RAINFALL from 01/21/17 2:00 AM to 01/22/17 2:00 AM



24-Hour Rainfall Forecast for 21 January 2017

JMA Global Spectral Model

GSM FCST 24 HR RAINFALL from 01/22/17 2:00 AM to 01/23/17 2:00 AM



24-Hour Rainfall Forecast for 21 January 2017

JMA Global Spectral Model

WHAT TO EXPECT

For Today:

- Eastern Visayas will experience moderate to occasionally heavy rains and thunderstorms today.
- Palawan, Mindanao and rest of Visayas will have light to moderate rains and isolated thunderstorms.

For Tomorrow (21 January)

- Bicol region, Eastern Visayas and Eastern Mindanao (Caraga and Davao regions) will have light to moderate rains and isolated thunderstorms.

For Sunday (22 January)

- Moderate to occasionally heavy rains and thunderstorms over Aurora, Quezon, Bicol, Eastern Visayas and Caraga regions. Rest of CALABARZON, of Visayas and of Mindanao will have light to moderate rains and isolated thunderstorms.