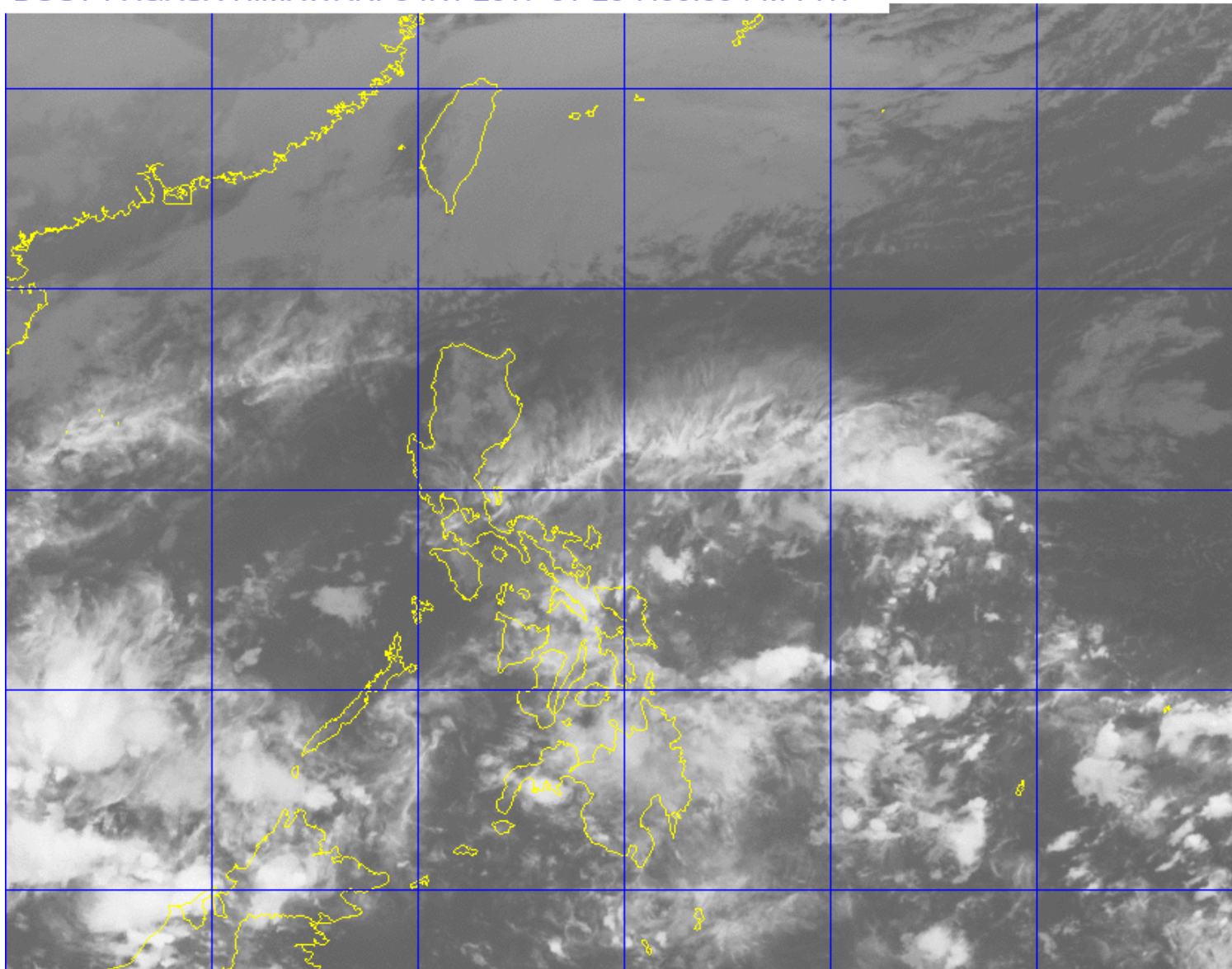


**Response Clusters
Situation Report 1
Tail-End of a Cold
Front**

**January 21 2017
6:00 AM**

DOST PAGASA HIMAWARI-8 IR1 2017-01-20 7:00:00 PM PHT



OUTLINE

- Overview: Tail-End of a Cold Front
- Disaster Response Operations

QUICK STATS

Affected Families / Persons

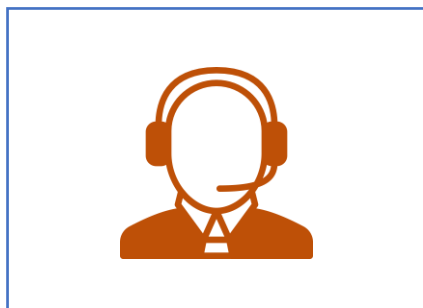
- **58,334** families
- **276,860** persons
- **482** barangays in **Regions NIR, VII, VIII, IX, X, ARMM and CARAGA.**

Families in Evacuation Centers

- **17,237** families
- **84,292** persons
- **200** evacuation centers in **Regions NIR, VII, VIII, IX, X and**



Tail-End of a Cold Front RESPONSE ACTIONS



OPERATIONS CENTERS

Activated Red Alert
Status on 20 January
2017 1700H



DISPLACED FAMILIES

58,334 FAMILIES
276,860 PERSONS



CONDUCTED DISASTER RESPONSE CLUSTER MEETINGS



ASSISTANCE PROVIDED

- ₱7,282,478.90
- ₱6,415,628.36– DSWD
- ₱866,850.54 - LGU

Tail-End of a Cold Front

RESPONSE OPERATIONS



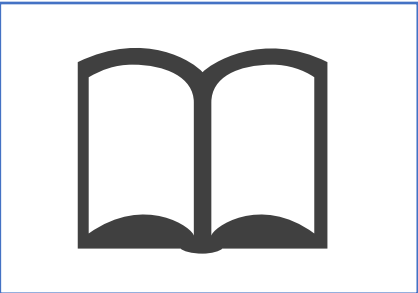
CAMP COORDINATION AND CAMP MANAGEMENT

200 Evacuation Center Opened
17,237 Families Served
276,860 Persons Served



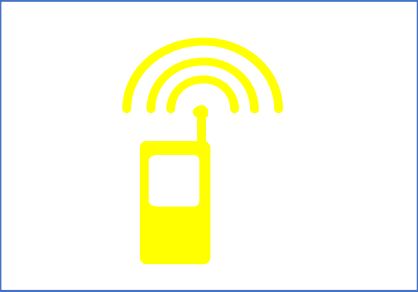
HEALTH

A total of PhP 3,120,449.70 amount of logistics were augmented by DOH Regional Offices to its respective provinces.



EDUCATION

49 Total Schools used as Evacuation Centers
118 Total Classrooms



EMERGENCY TELECOMMUNICATIONS

OCD Activated the (ETC) effective 2200H 20 January 2017
- Deployed personnel at the Response Cluster Operations Center in Camp General Emilio Aguinaldo, Quezon City



SEARCH, RESCUE AND RETRIEVAL

- Conducted rescue operations in Sitio Malabuaya, Brgy Kayaga, Kabacan



Tail-End of a Cold Front

RESPONSE OPERATIONS



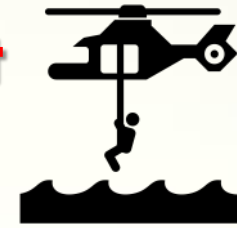
LOGISTICS

AFP

- Deployed personnel to assist in the distribution of relief goods

DPWH

- DPWH District Engineering Offices installed warning signs and deployed personnel and equipment to conduct clearing operations.



CLOSED ROAD SECTIONS

- Three (3) road sections are not passable to all types of vehicles: one (1) in Region VII due to landslide and rock fall and two (2) in Region XIII due to flooding.

DPWH District Engineering Offices installed warning signs and deployed personnel and equipment to conduct clearing operations.

All national road networks in Regions VIII, X, XI and NIR are passable to all types of vehicles.

